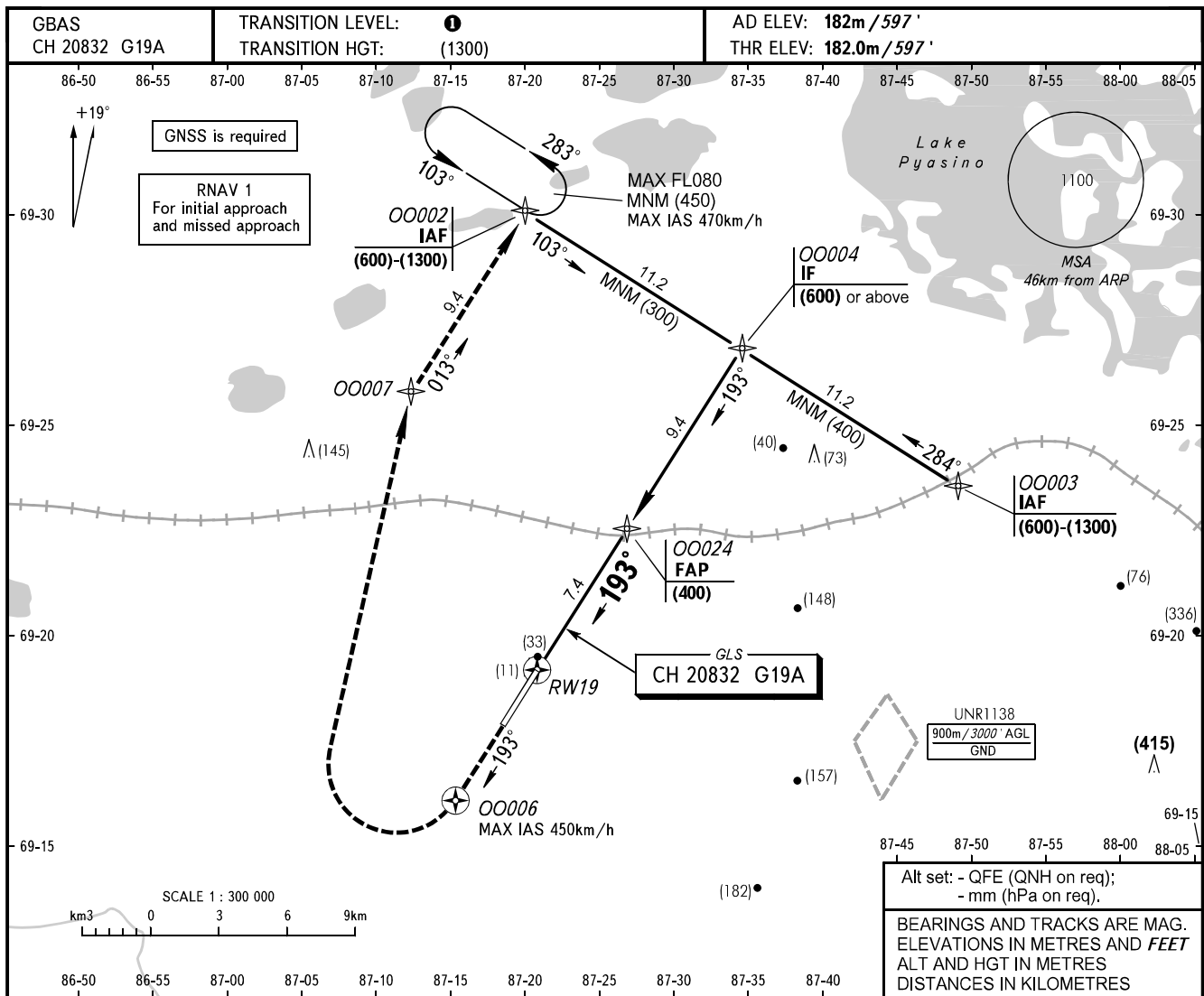


**INSTRUMENT
APPROACH
CHART - ICAO**

NORILSK RADAR	120.400
NORILSK PRECISION	118.300
NORILSK START	118.300

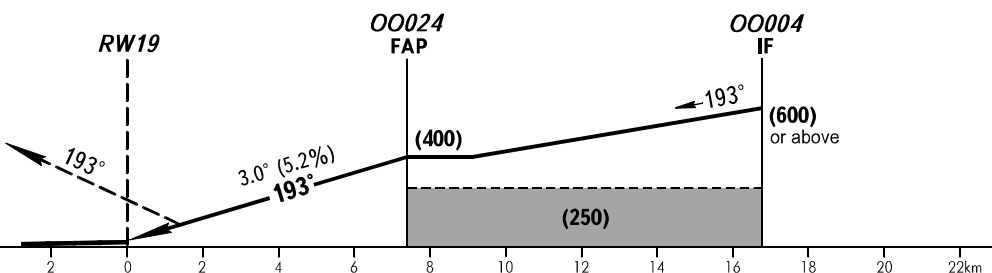
NORILSK, RUSSIA
ALYKEL
GLS RWY 19



Alt set: - QFE (QNH on req);
- mm (hPa on req).

BEARINGS AND TRACKS ARE MAG.
ELEVATIONS IN METRES AND FEET
ALT AND HGT IN METRES
DISTANCES IN KILOMETRES

MISSED APPROACH
Climb on track 193° to OO006
turn RIGHT to OO007, then to
OO002 climbing to (600) or above
than according to chart or to the
holding area.



OCA(H)		A	B	C	D						
Straight-in Approach	CAT I	231(49)	234(52)	237(55)	240(58)						
Circling		305(120)	335(150)	365(180)	395(210)						
GROUND SPEED		km/h	150	180	210	240	270	300	330	360	390
RATE OF DESCENT		m/s	2.2	2.6	3.0	3.5	3.9	4.3	4.8	5.2	5.6

1 TRANSITION LEVEL:
- FL060 when QFE is 744mm mercury column or above;
- FL070 when QFE is 717mm mercury column or above,
but less than 744mm mercury column;
- FL080 when QFE is less than 717mm mercury column.