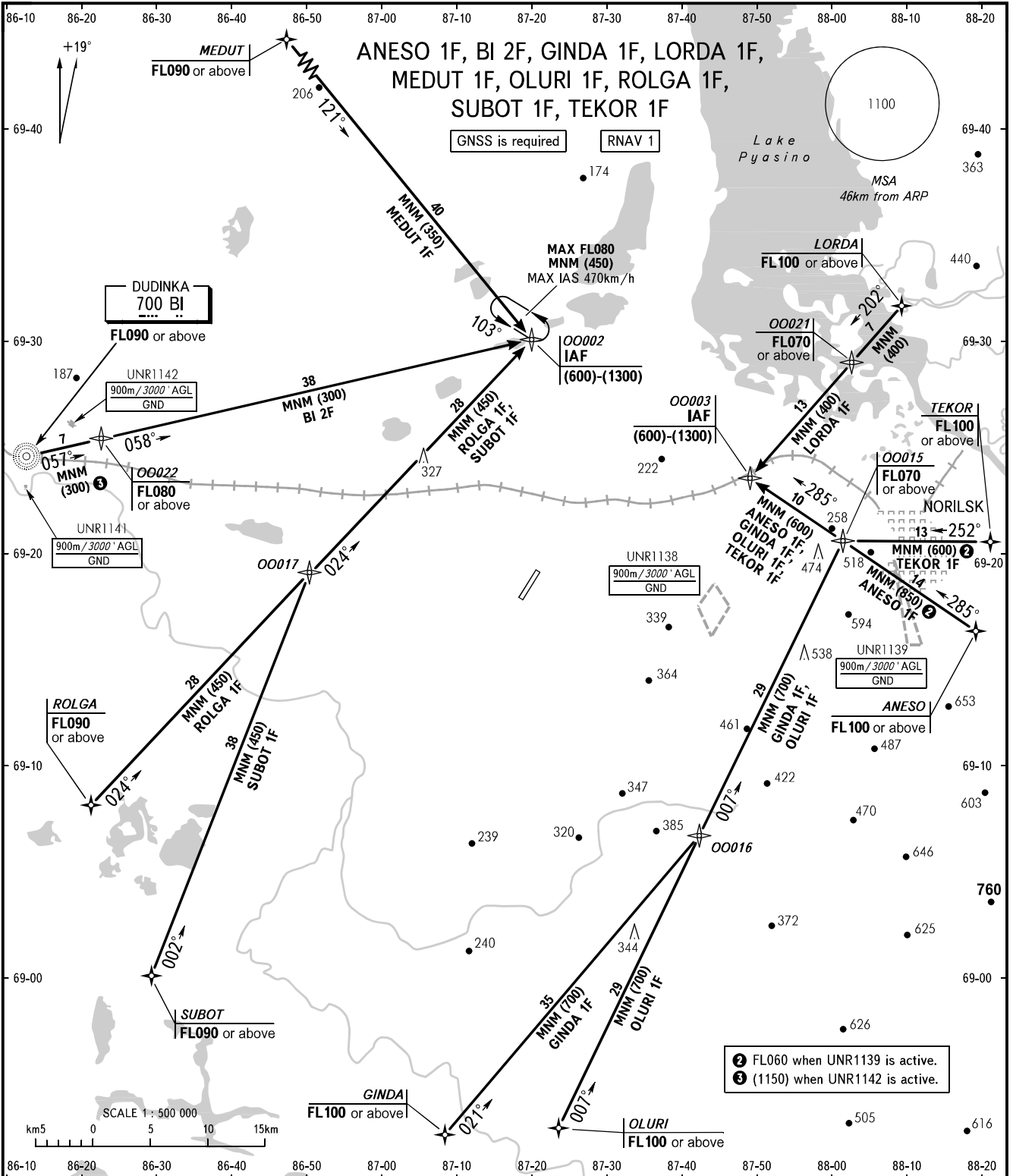


STANDARD ARRIVAL CHART
INSTRUMENT (STAR) - ICAO

TRANSITION
LEVEL: **1**



2 FL060 when UNR1139 is active.
3 (1150) when UNR1142 is active.

NORILSK PRECISION **118.300**
 NORILSK RADAR **120.400**
 NORILSK START **118.300**

1 TRANSITION LEVEL:
 - FL060 when QFE is 744mm mercury column or above;
 - FL070 when QFE is 717mm mercury column or above,
 but less than 744mm mercury column;
 - FL080 when QFE is less than 717mm mercury column.

BEARINGS AND TRACKS ARE MAG.
 ELEVATIONS, ALTITUDES AND
 HEIGHTS IN METRES
 DISTANCES IN KILOMETRES

Alt set: - QFE (QNH on req);
 - mm (hPa on req).