

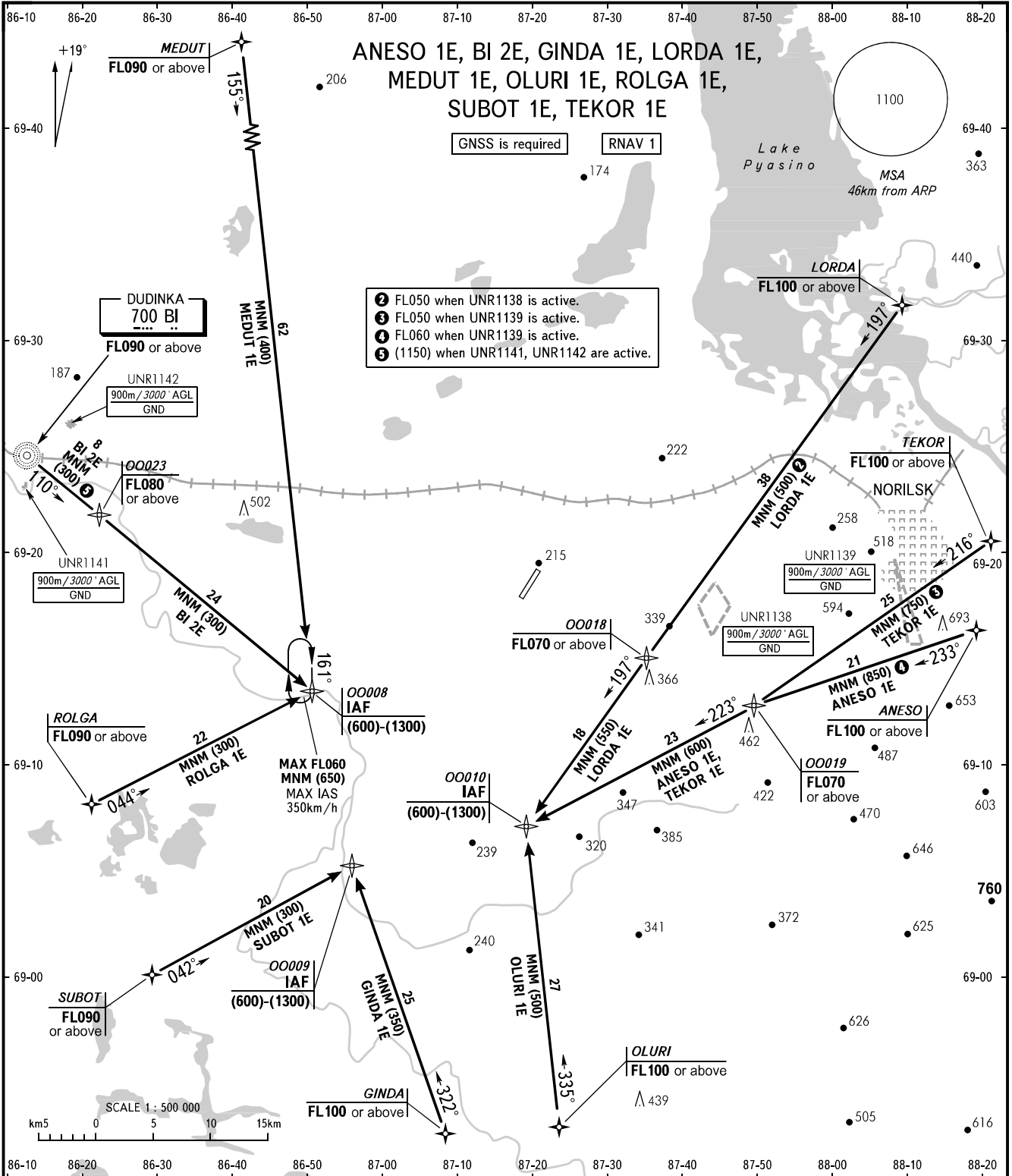
STANDARD ARRIVAL CHART
INSTRUMENT (STAR) - ICAO

NORILSK, RUSSIA

ALYKEL

RNAV RWY 01

TRANSITION
LEVEL : 1



NORILSK PRECISION 118.300
NORILSK RADAR 120.400
NORILSK START 118.300

① TRANSITION LEVEL:
- FL060 when QFE is 744mm mercury column or above;
- FL070 when QFE is 717mm mercury column or above,
but less than 744mm mercury column;
- FL080 when QFE is less than 717mm mercury column.

BEARINGS AND TRACKS ARE MAG.
ELEVATIONS, ALTITUDES AND
HEIGHTS IN METRES
DISTANCES IN KILOMETRES

Alt set: - QFE (QNH on req);
- mm (hPa on req).

CHANGE: New chart