

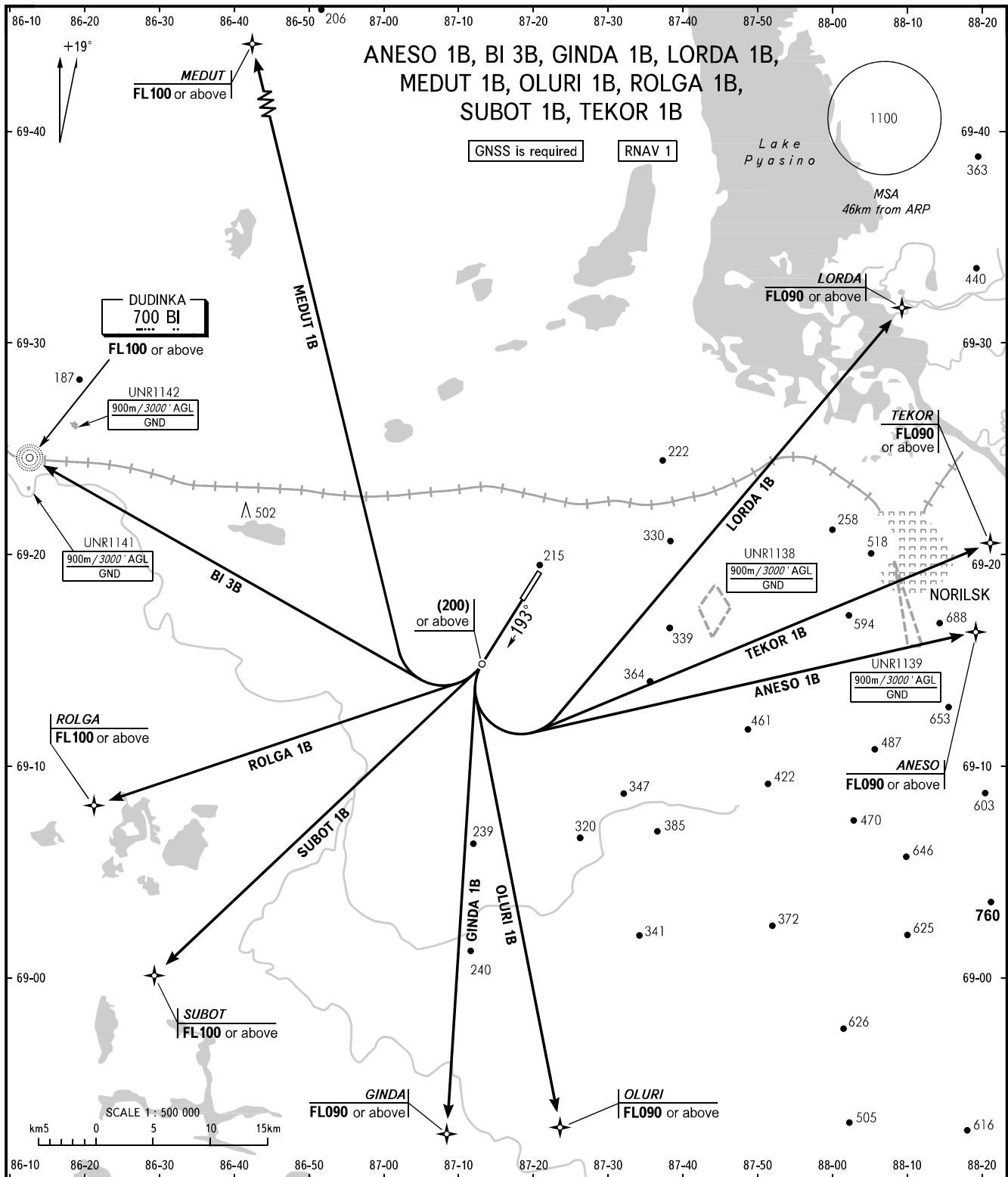
STANDARD DEPARTURE CHART  
INSTRUMENT (SID) - ICAO

TRANSITION  
HEIGHT : (1300)

NORILSK, RUSSIA

ALYKEL

RWY 19



NORILSK START    **118.300**  
NORILSK RADAR    **120.400**

The minimum climb gradients (when UNR1138, UNR1139 are active):  
- 6.6% up to (1150) for ANESO 1B;  
- 6.6% up to (1150) for LORDA 1B;  
- 6.6% up to (1150) for TEKOR 1B.

The minimum climb gradients due to the airspace structure:  
- 5.1% up to FL090 for ANESO 1B;  
- 5.9% up to FL100 for BI 3B;  
- 5.4% up to FL090 for GINDA 1B;  
- 4.4% up to FL090 for LORDA 1B;  
- 4.1% up to FL100 for MEDUT 1B;  
- 5.5% up to FL090 for OLURI 1B;  
- 6.9% up to FL100 for ROLGA 1B;  
- 6.3% up to FL100 for SUBOT 1B;  
- 4.8% up to FL090 for TEKOR 1B.

BEARINGS AND TRACKS ARE MAG.  
ELEVATIONS, ALTITUDES AND  
HEIGHTS IN METRES  
DISTANCES IN KILOMETRES

Alt set: - QFE (QNH on req);  
- mm (hPa on req).

CHANGE: New chart