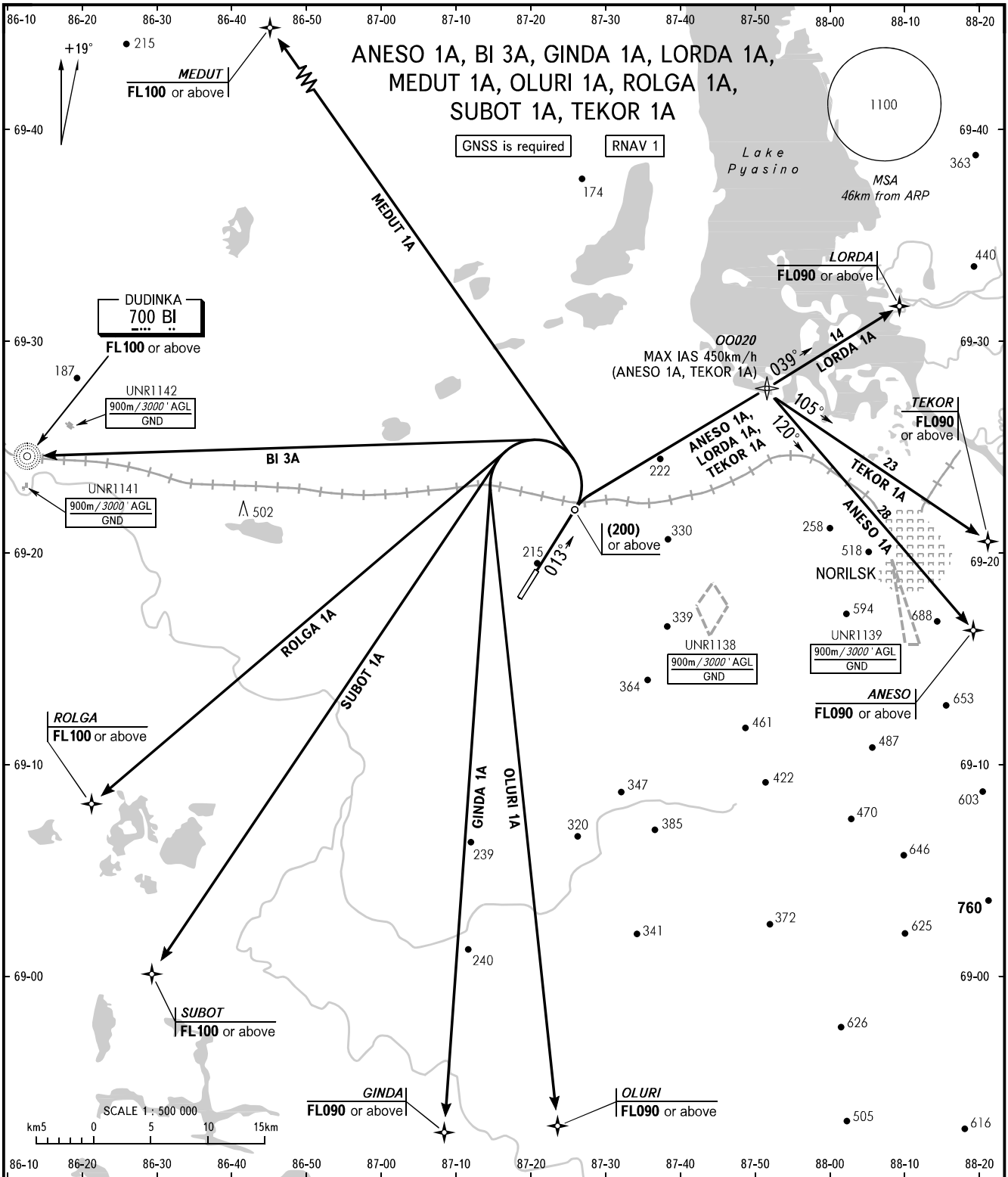


STANDARD DEPARTURE CHART  
INSTRUMENT (SID) - ICAO

TRANSITION  
HEIGHT : (1300)

NORILSK, RUSSIA  
ALYKEL  
RNAV RWY 01



NORILSK START **118.300**  
NORILSK RADAR **120.400**

The minimum climb gradients due to the airspace structure:

- 5.6% up to FL080 for ANESO 1A;
- 5.3% up to FL100 for BI 3A;
- 3.6% up to FL090 for GINDA 1A;
- 7.6% up to FL080 for LORDA 1A;
- 4.8% up to FL100 for MEDUT 1A;
- 3.6% up to FL090 for OLURI 1A;
- 4.9% up to FL100 for ROLGA 1A;
- 4.3% up to FL100 for SUBOT 1A;
- 5.8% up to FL080 for TEKOR 1A.

BEARINGS AND TRACKS ARE MAG.  
ELEVATIONS, ALTITUDES AND  
HEIGHTS IN METRES  
DISTANCES IN KILOMETRES

Alt set: - QFE (QNH on req);  
- mm (hPa on req).

CHANGE: New chart