

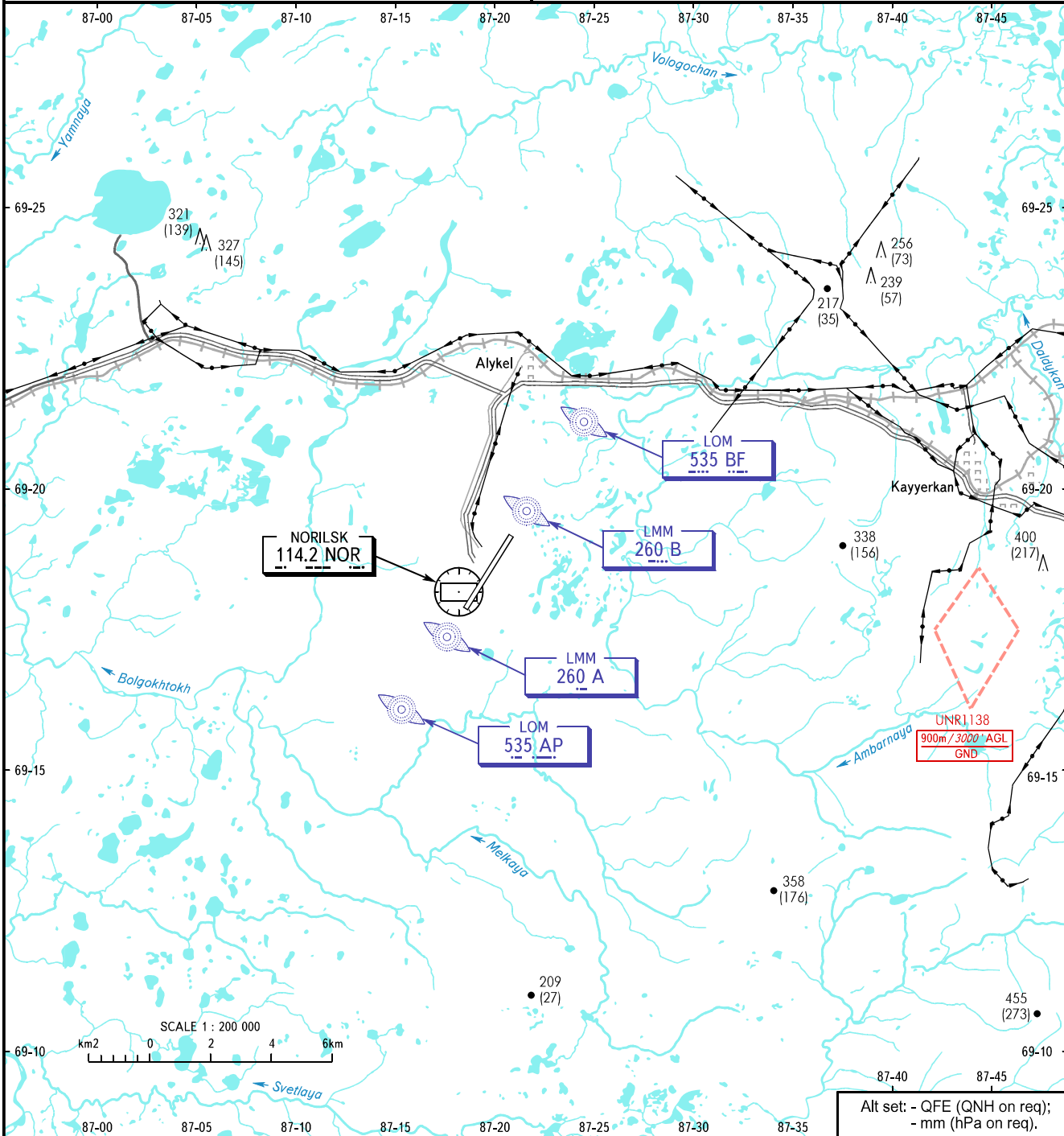
VISUAL
APPROACH
CHART - ICAO

NORILSK RADAR	120.400
NORILSK PRECISION	118.300
NORILSK START	118.300

NORILSK, RUSSIA
ALYKEL
RWY 01/19

TRANSITION LEVEL: **1**

AD ELEV: 182m / 597'



- 1** TRANSITION LEVEL:
- FL060 when QFE is 744mm mercury column or above;
 - FL070 when QFE is 717mm mercury column or above, but less than 744mm mercury column;
 - FL080 when QFE is less than 717mm mercury column.

CHANGE: New chart