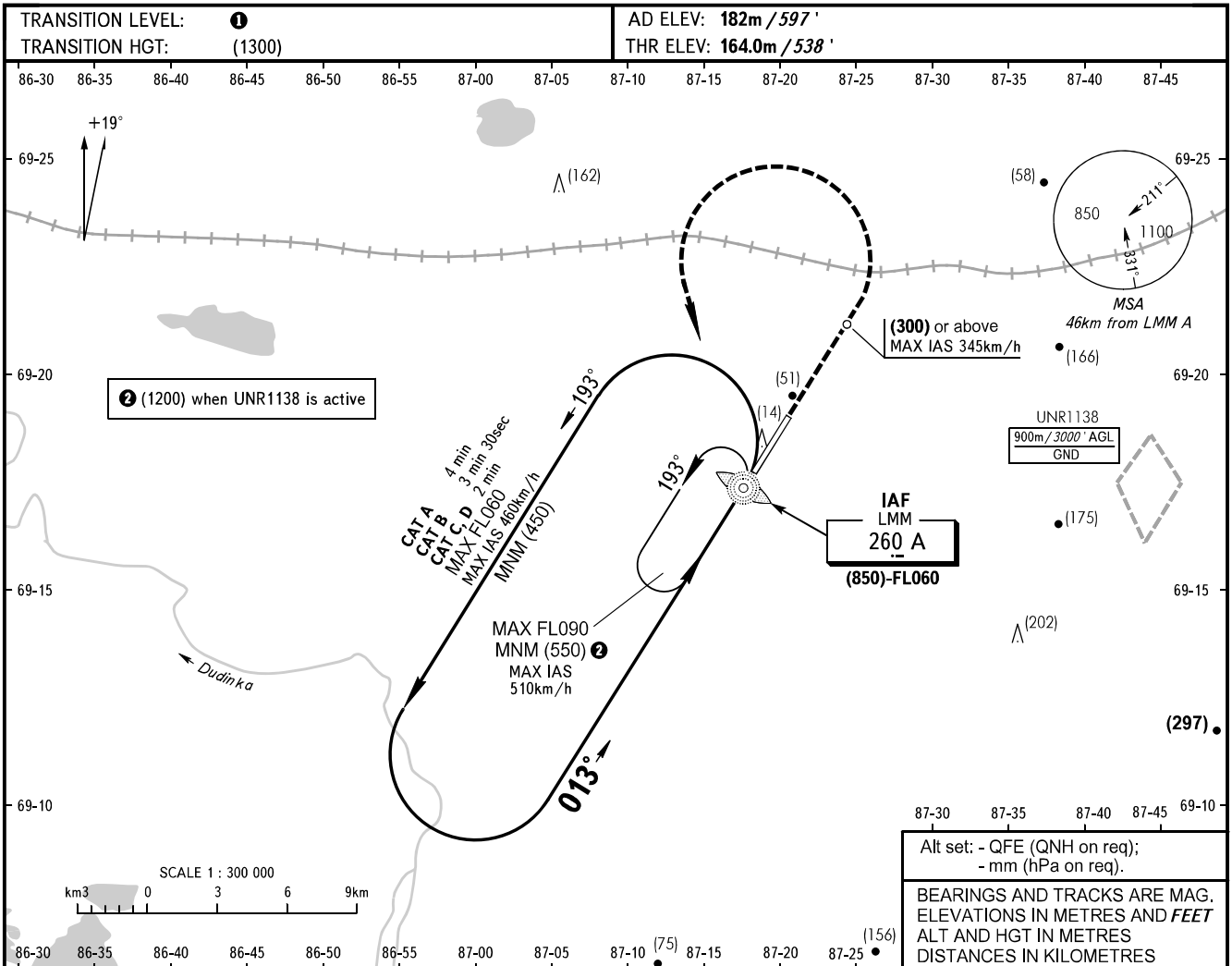


**INSTRUMENT  
APPROACH  
CHART - ICAO**

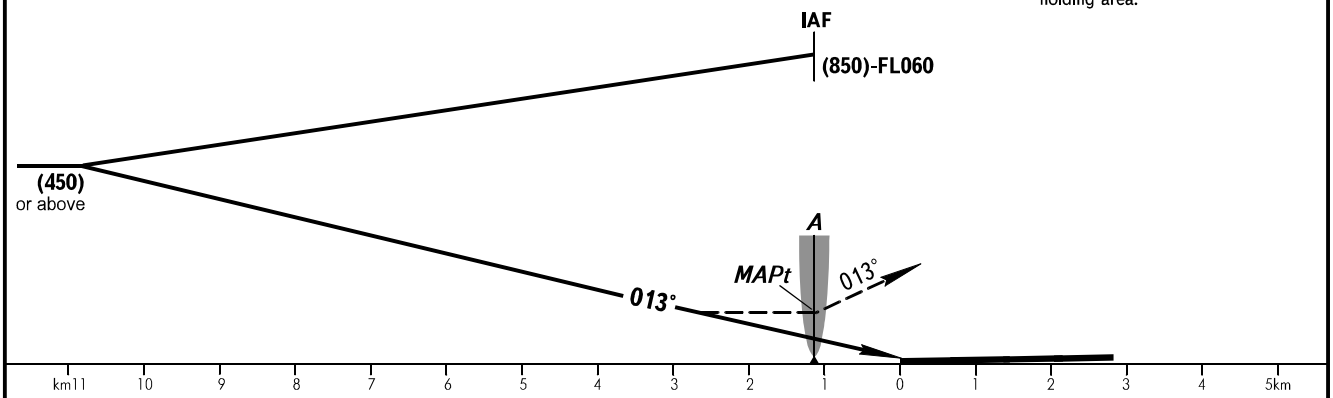
NORILSK RADAR	<b>120.400</b>
NORILSK PRECISION	<b>118.300</b>
NORILSK START	<b>118.300</b>

**NORILSK, RUSSIA**  
AILYKEL  
NDB W RWY 01



Alt set: - QFE (QNH on req);  
- mm (hPa on req).  
BEARINGS AND TRACKS ARE MAG.  
ELEVATIONS IN METRES AND FEET  
ALT AND HGT IN METRES  
DISTANCES IN KILOMETRES

**MISSED APPROACH**  
Climb on track 013° to (300) or above, turn LEFT to LMM A climbing to (450) or above, then according to chart or to the holding area.



OCA(H)		A	B	C	D
Straight-in Approach		270(105)	270(105)	270(105)	270(105)
Circling		305(120)	335(150)	365(180)	395(210)

**1** TRANSITION LEVEL:  
- FL060 when QFE is 744mm mercury column or above;  
- FL070 when QFE is 717mm mercury column or above, but less than 744mm mercury column;  
- FL080 when QFE is less than 717mm mercury column.  
**WARNING:**  
1. MAPt at LMM A. Timing not authorized for defining MAPt.  
2. Turn before MAPt is PROHIBITED.

CHANGE: New chart