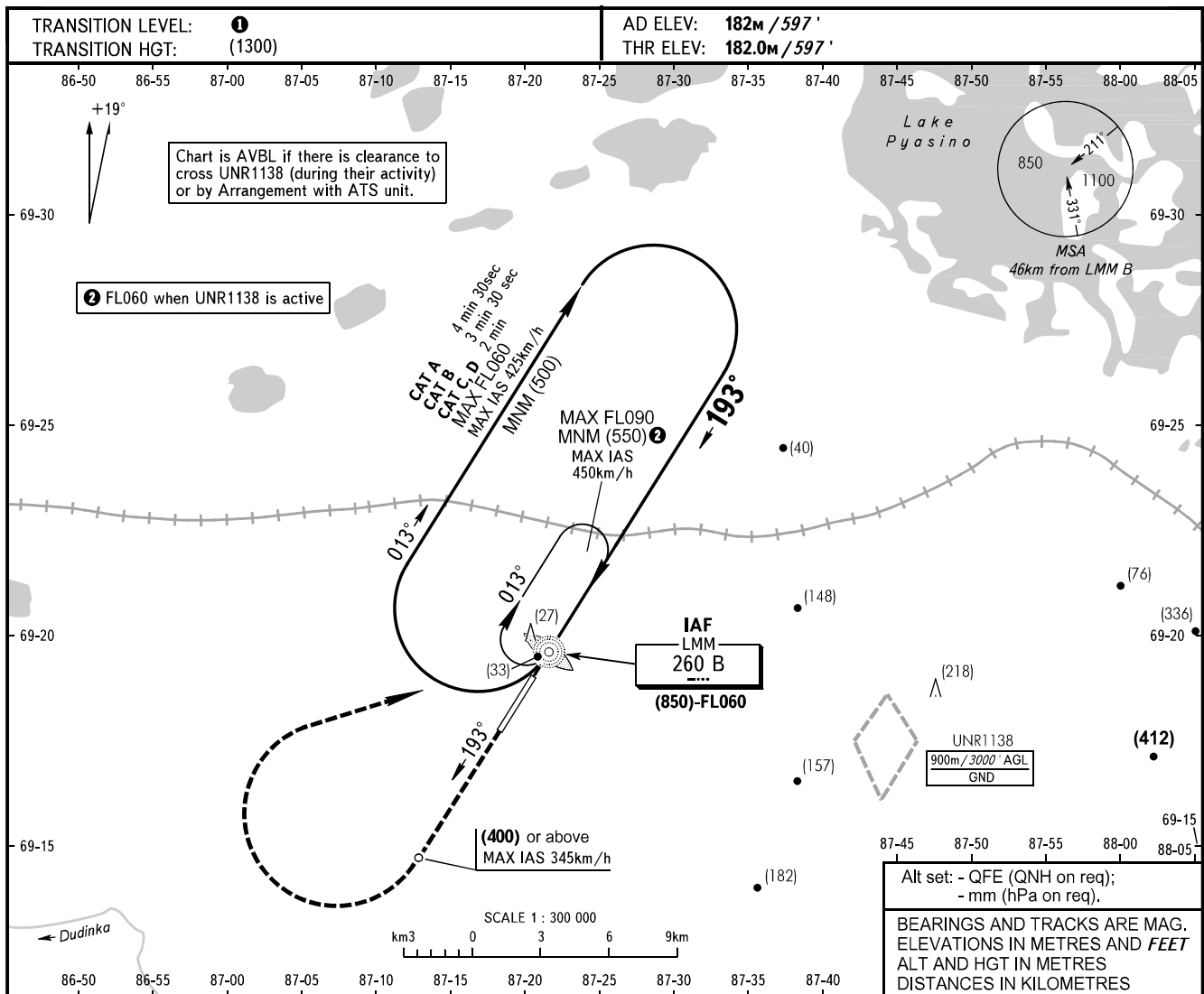


**INSTRUMENT
APPROACH
CHART - ICAO**

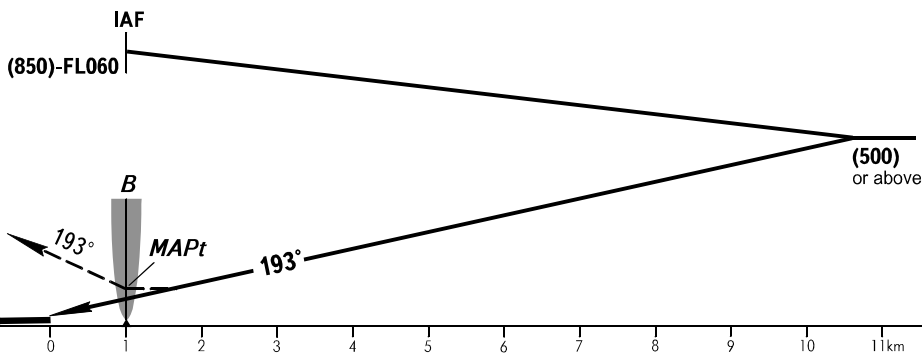
NORILSK RADAR **120.400**
NORILSK PRECISION **118.300**
NORILSK START **118.300**

NORILSK, RUSSIA
ALYKEL
NDB X RWY19



MISSED APPROACH

Climb on track 193° to (400) or above, turn RIGHT to LMM B climbing to (500) or above, than according to chart or to the holding area.



OCA(H)		A	B	C	D
Straight-in Approach		300(120)	300(120)	300(120)	300(120)
Circling		305(120)	335(150)	365(180)	395(210)

- 1** TRANSITION LEVEL:
- FL060 when QFE is 744mm mercury column or above;
- FL070 when QFE is 717mm mercury column or above, but less than 744mm mercury column;
- FL080 when QFE is less than 717mm mercury column.

- WARNING:**
1. MAPt at LMM B. Timing not authorized for defining MAPt.
2. Turn before MAPt is PROHIBITED.