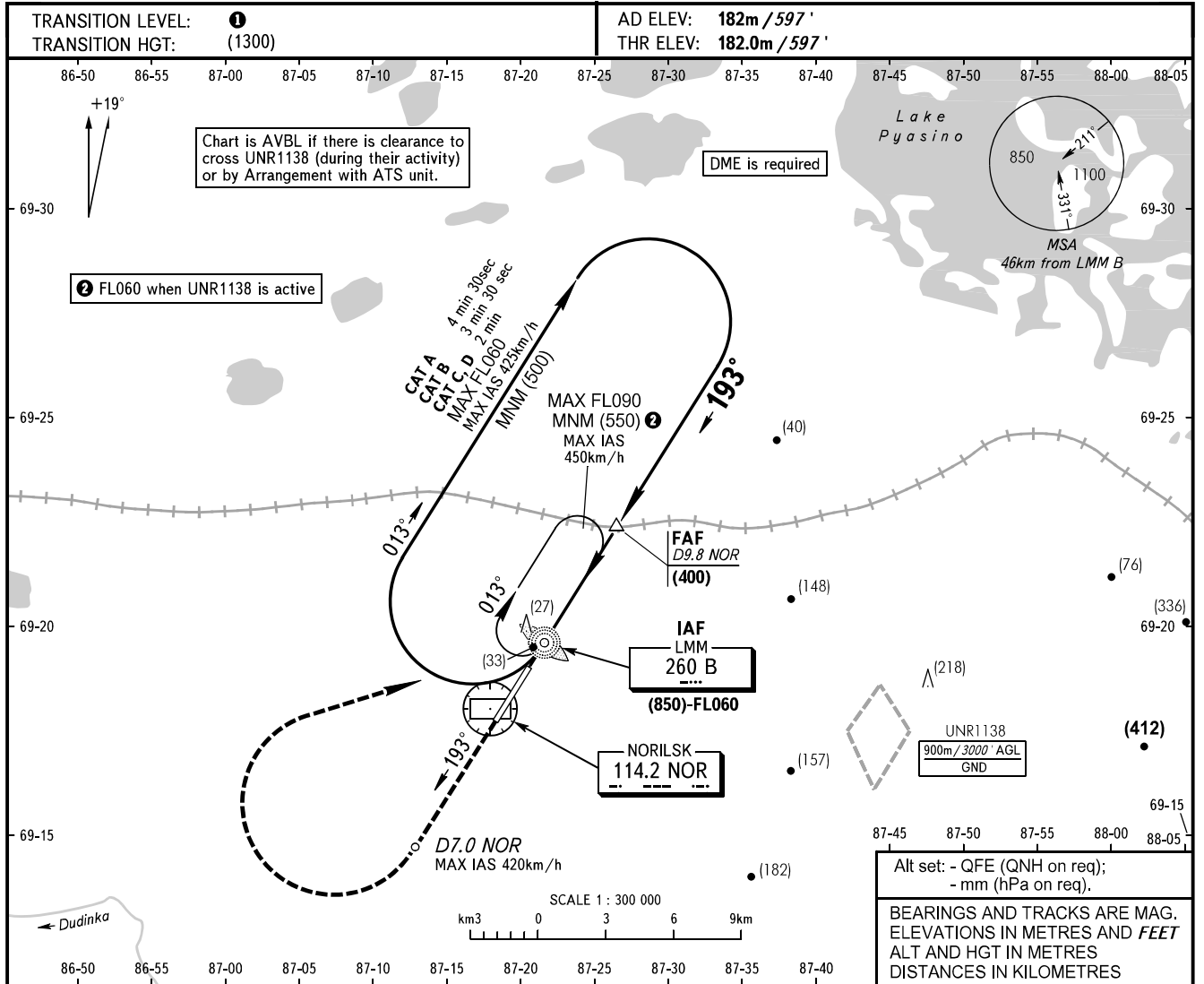


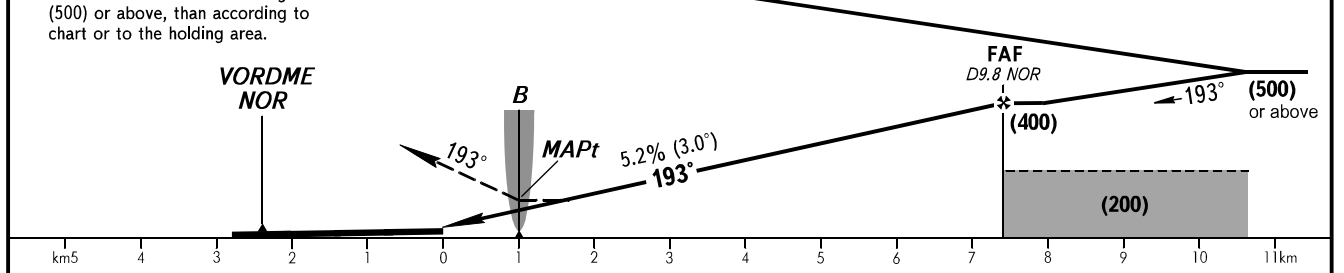
**INSTRUMENT  
APPROACH  
CHART - ICAO**

NORILSK RADAR **120.400**  
NORILSK PRECISION **118.300**  
NORILSK START **118.300**

**NORILSK, RUSSIA**  
ALYKEL  
NDB Y RWY19



<b>MISSED APPROACH</b> Climb on track 193° to D7.0 NOR, turn RIGHT to LMM B climbing to (500) or above, then according to chart or to the holding area.	<b>IAF</b>	DME NOR	5.0	7.0	9.0
	<b>(850)-FL060</b>	HEIGHT	(151)	(255)	(359)



Straight-in Approach	OCA(H)	A	B	C	D
		285(105)	285(105)	285(105)	285(105)
Circling		305(120)	335(150)	365(180)	395(210)

**1** TRANSITION LEVEL:  
- FL060 when QFE is 744mm mercury column or above;  
- FL070 when QFE is 717mm mercury column or above, but less than 744mm mercury column;  
- FL080 when QFE is less than 717mm mercury column.

**WARNING:**  
1. MAPt at LMM B. Timing not authorized for defining MAPt.  
2. Turn before MAPt is PROHIBITED.

GROUND SPEED	km/h	150	180	210	240	270	300	330	360	390
RATE OF DESCENT	m/s	2.2	2.6	3.0	3.5	3.9	4.3	4.8	5.2	5.6