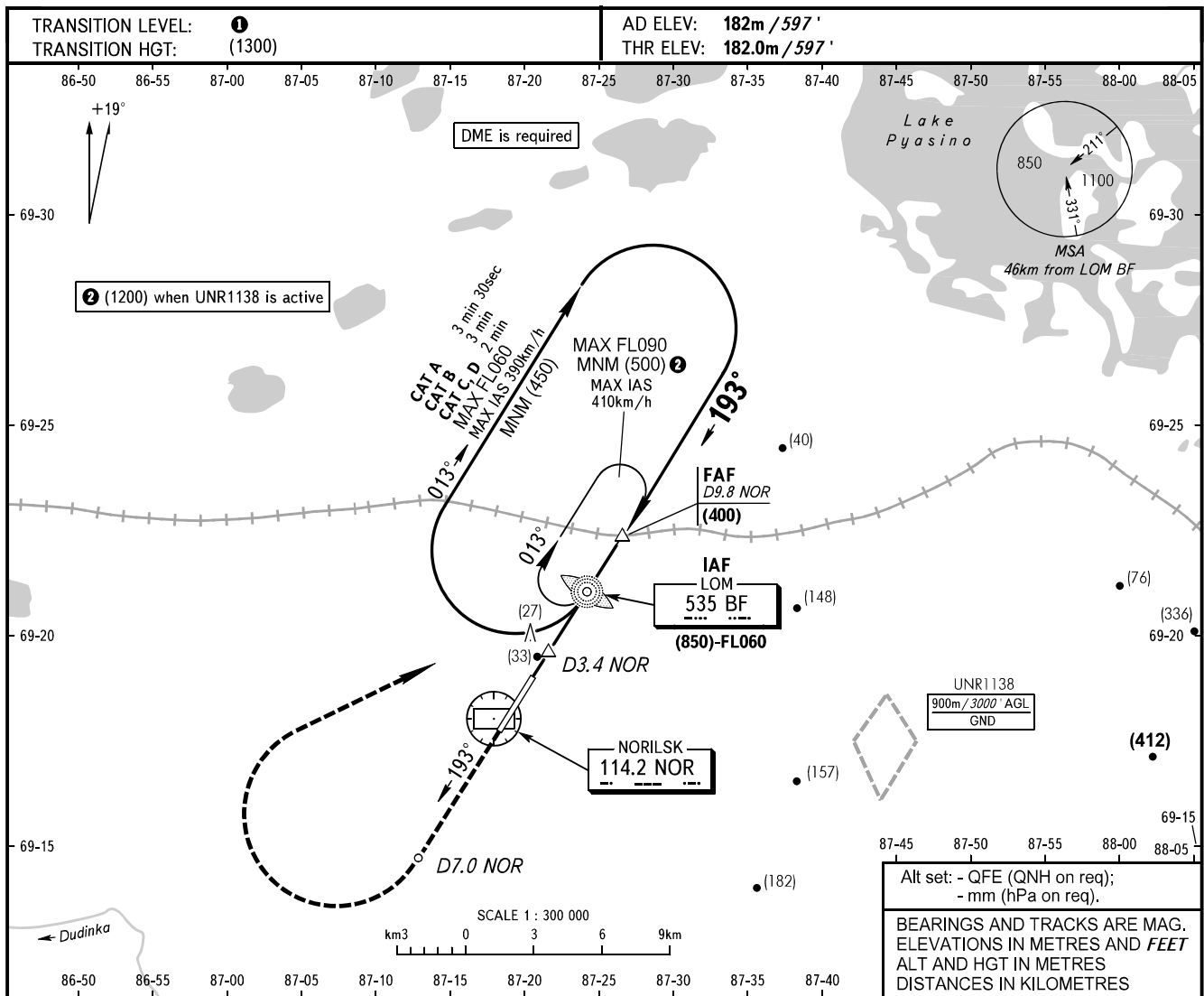


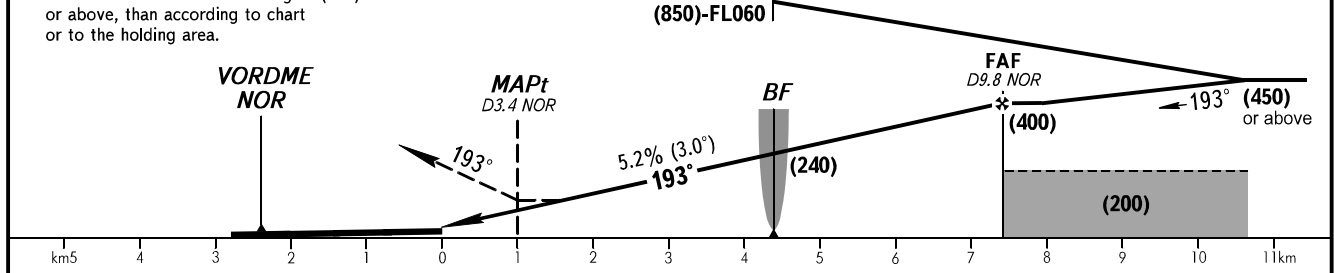
**INSTRUMENT
APPROACH
CHART - ICAO**

NORILSK RADAR **120.400**
NORILSK PRECISION **118.300**
NORILSK START **118.300**

NORILSK, RUSSIA
ALYKEL
NDB Z RWY 19



MISSED APPROACH
Climb on track 193° to D7.0 NOR, turn RIGHT to LOM BF climbing to (450) or above, then according to chart or to the holding area.



OCA(H)	A	B	C	D
Straight-in Approach	285(105)	285(105)	285(105)	285(105)
Circling	305(120)	335(150)	365(180)	395(210)

① **TRANSITION LEVEL:**
- FL060 when QFE is 744mm mercury column or above;
- FL070 when QFE is 717mm mercury column or above, but less than 744mm mercury column;
- FL080 when QFE is less than 717mm mercury column.

WARNING:
1. MAPt at D3.4 NOR. Timing not authorized for defining MAPt.
2. Turn before MAPt is PROHIBITED.

GROUND SPEED	km/h	150	180	210	240	270	300	330	360	390
RATE OF DESCENT	m/s	2.2	2.6	3.0	3.5	3.9	4.3	4.8	5.2	5.6