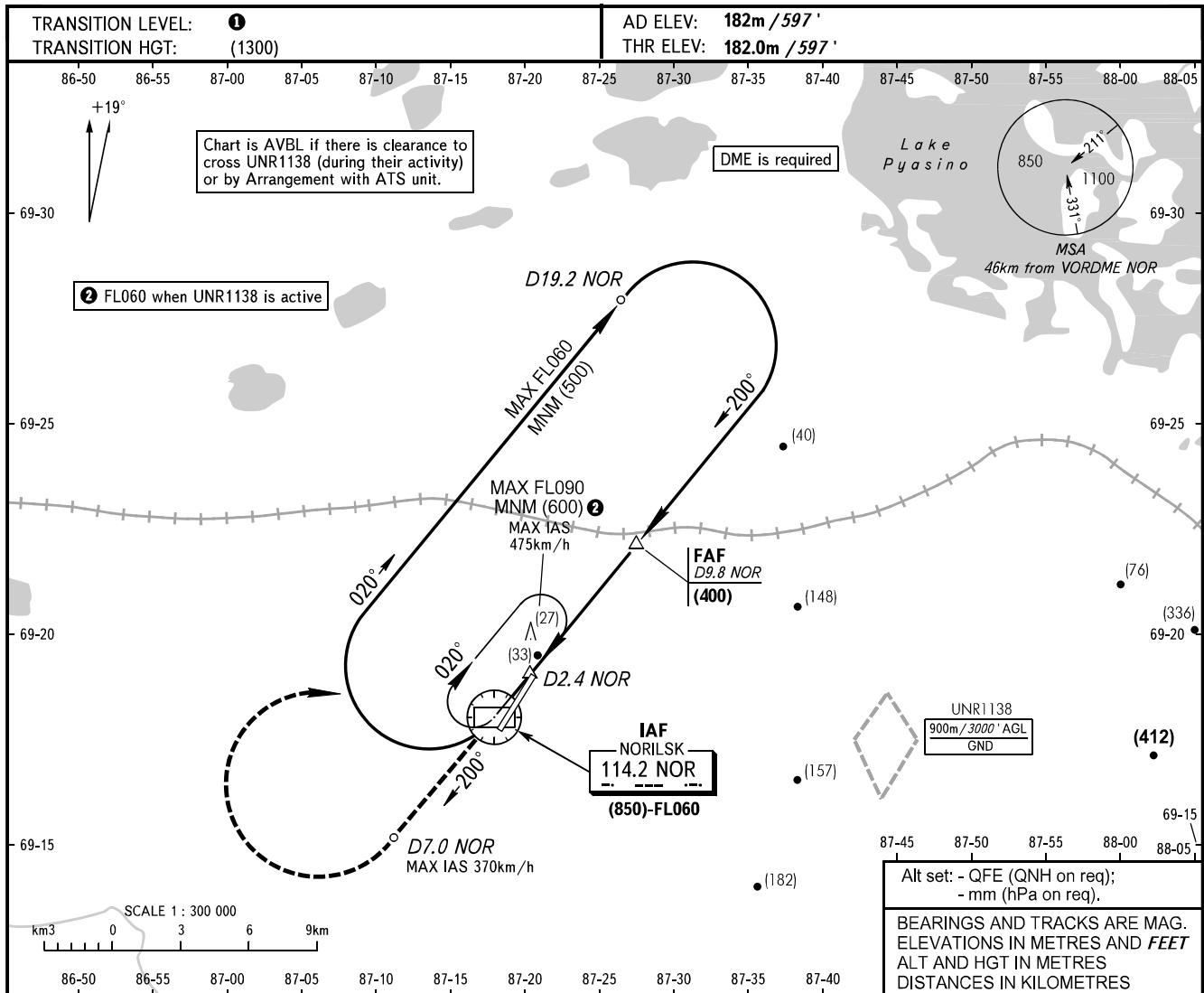


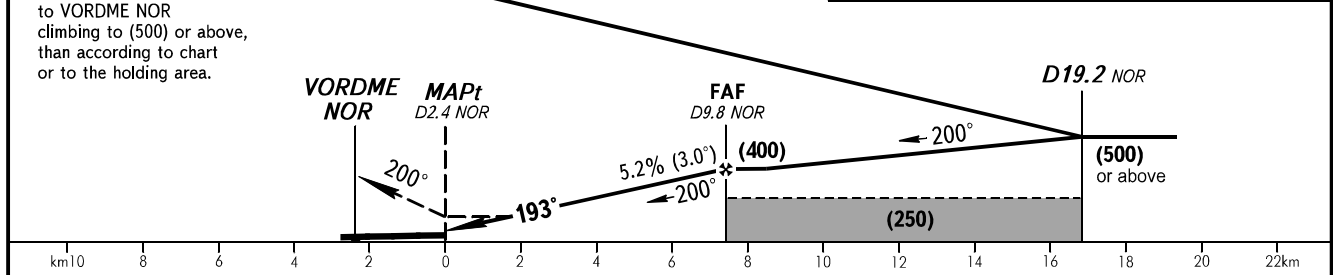
**INSTRUMENT
APPROACH
CHART - ICAO**

NORILSK RADAR **120.400**
NORILSK PRECISION **118.300**
NORILSK START **118.300**

NORILSK, RUSSIA
ALYKEL
VOR RWY 19



MISSED APPROACH Climb on track 200° to D7.0 NOR, turn RIGHT to VORDME NOR climbing to (500) or above, than according to chart or to the holding area.	IAF (850)-FL060	DME NOR	5.0	7.0	9.0
		HEIGHT	(151)	(255)	(359)



Straight-in Approach	OCA(H)	A	B	C	D
		285(105)	285(105)	285(105)	285(105)
Circling		305(120)	335(150)	365(180)	395(210)

- 1** TRANSITION LEVEL:
- FL060 when QFE is 744mm mercury column or above;
- FL070 when QFE is 717mm mercury column, but less than 744mm mercury column;
- FL080 when QFE is less than 717mm mercury column.
- WARNING:**
1. Final approach segment is offset by 7° from RCL.
2. MAPt at D2.4 NOR. Timing not authorized for defining MAPt.
3. Turn before MAPt is PROHIBITED.

GROUND SPEED	km/h	150	180	210	240	270	300	330	360	390
RATE OF DESCENT	m/s	2.2	2.6	3.0	3.5	3.9	4.3	4.8	5.2	5.6