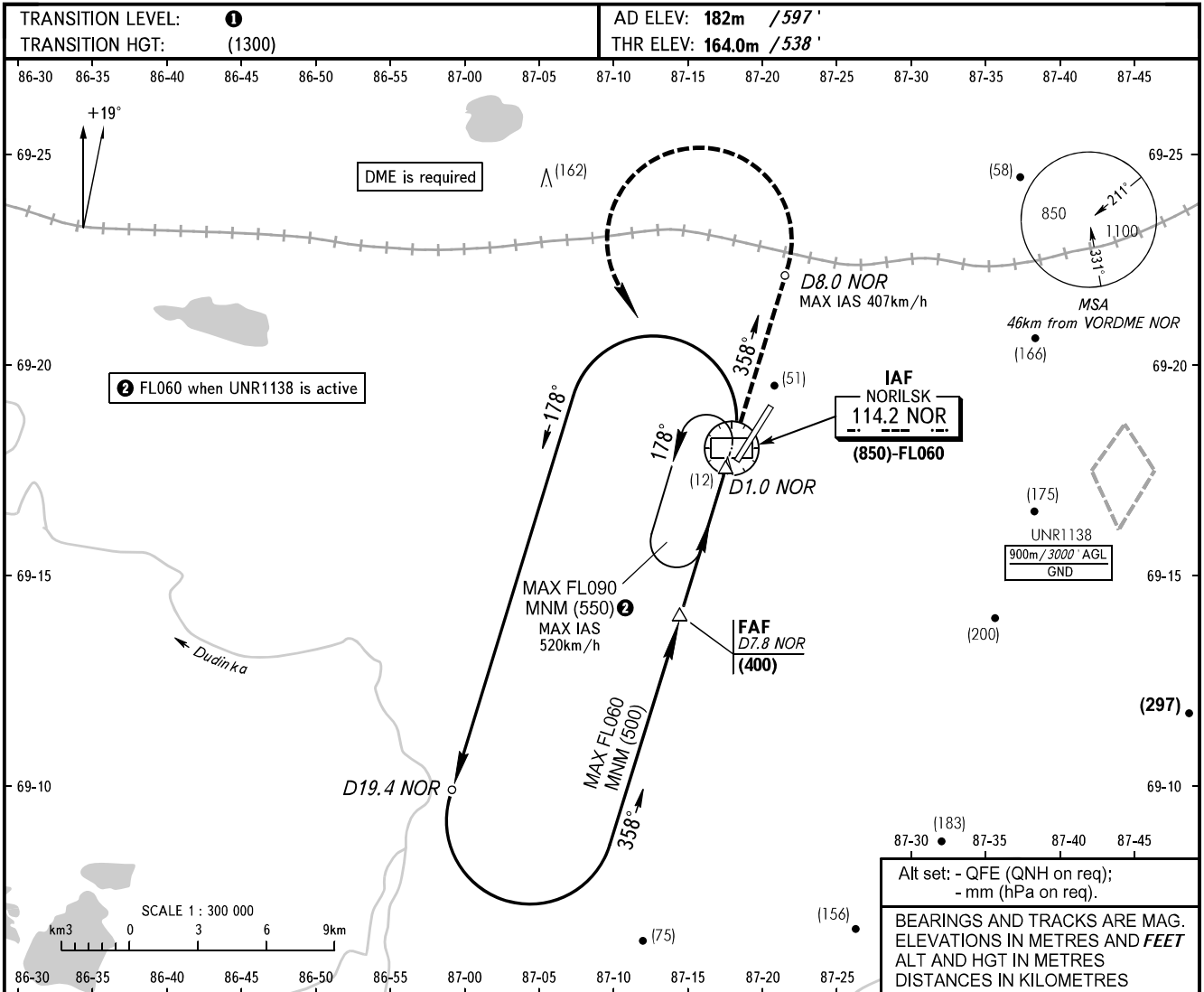


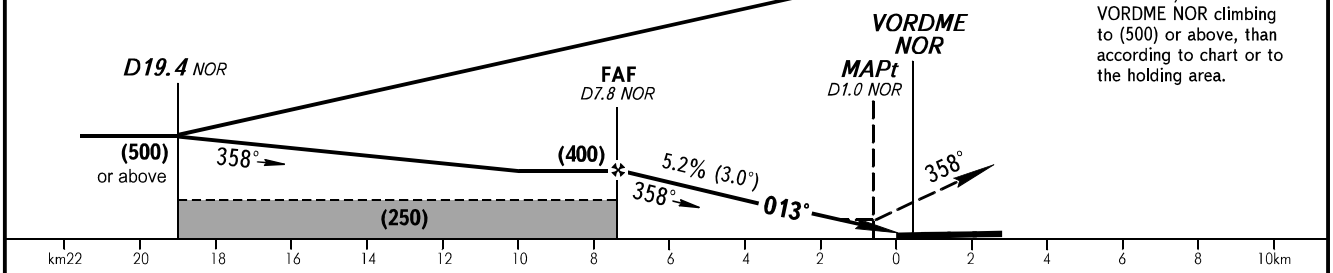
**INSTRUMENT  
APPROACH  
CHART - ICAO**

NORILSK RADAR	120.400
NORILSK PRECISION	118.300
NORILSK START	118.300

**NORILSK, RUSSIA**  
ALYKEL  
VOR RWY 01



DME NOR	6.0	4.0	2.0
HEIGHT	(327)	(223)	(119)



OCA(H)	A	B	C	D
Straight-in Approach	255(90)	255(90)	255(90)	255(90)
Circling	305(120)	335(150)	365(180)	395(210)

**1** TRANSITION LEVEL:  
 - FL060 when QFE is 744mm mercury column or above;  
 - FL070 when QFE is 717mm mercury column or above, but less than 744mm mercury column;  
 - FL080 when QFE is less than 717mm mercury column.

**WARNING:**  
 1. Final approach segment is offset by 15° from RCL.  
 2. MAPt at D1.0 NOR. Timing not authorized for defining MAPt.  
 3. Turn before MAPt is PROHIBITED.

GROUND SPEED	km/h	150	180	210	240	270	300	330	360	390
RATE OF DESCENT	m/s	2.2	2.6	3.0	3.5	3.9	4.3	4.8	5.2	5.6

CHANGE: VORDME