

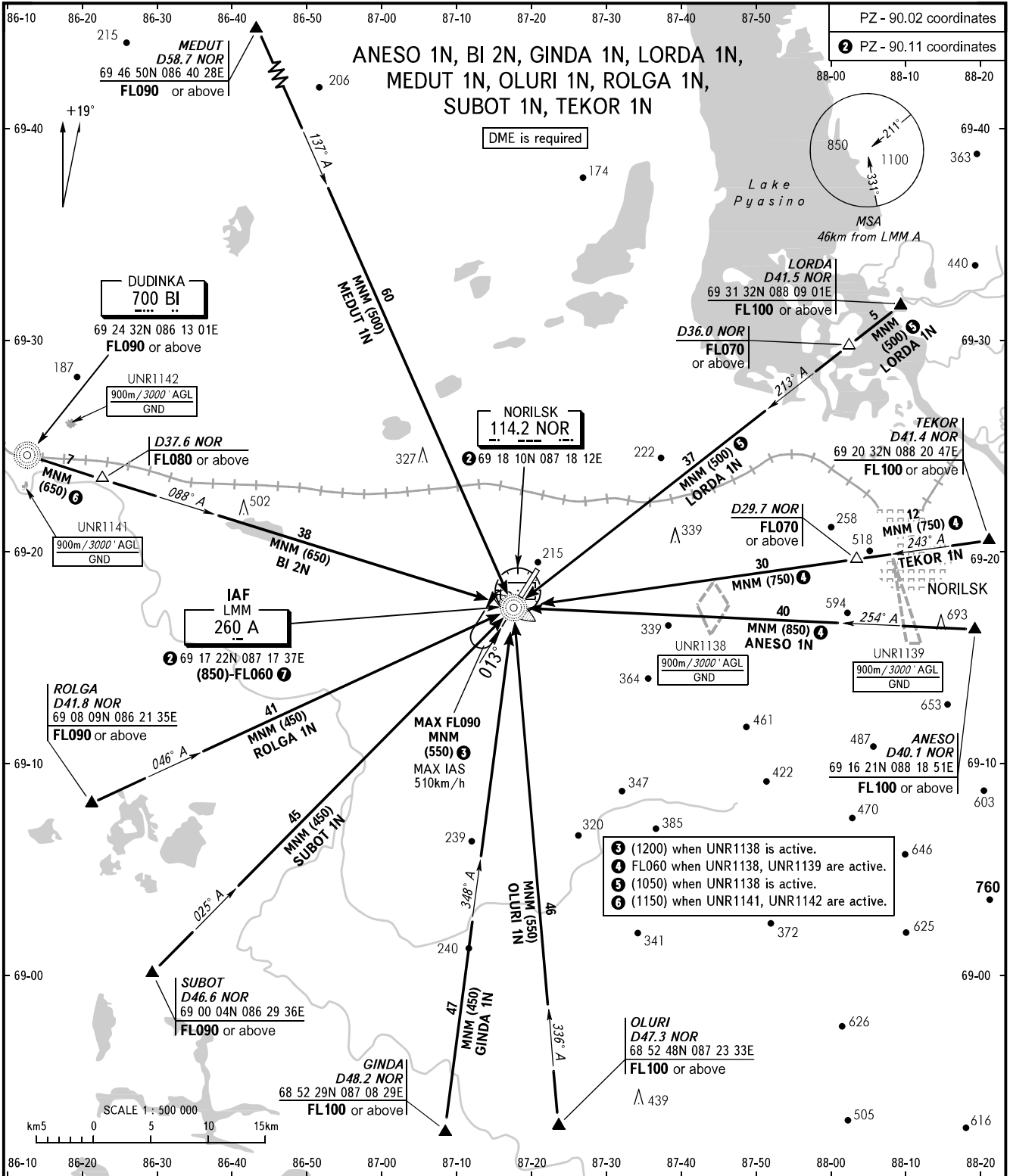
STANDARD ARRIVAL CHART  
INSTRUMENT (STAR) - ICAO

NORILSK, RUSSIA

ALYKEL

RWY 01

TRANSITION  
LEVEL: **1**



NORILSK PRECISION	118.300
NORILSK RADAR	120.400
NORILSK START	118.300

- 1** TRANSITION LEVEL:
- FL060 when QFE is 744mm mercury column or above;
  - FL070 when QFE is 717mm mercury column or above, but less than 744mm mercury column;
  - FL080 when QFE is less than 717mm mercury column.

BEARINGS AND TRACKS ARE MAG. ELEVATIONS, ALTITUDES AND HEIGHTS IN METRES DISTANCES IN KILOMETRES

Alt set: - QFE (QNH on req);  
- mm (hPa on req).

- 7** (1200) when UNR1138, UNR1139 are active (ANESO 1N).  
(1200) when UNR1138 is active (TEKOR 1N).  
(1150) when UNR1138 is active (LORDA 1N).

CHANGE: New chart