

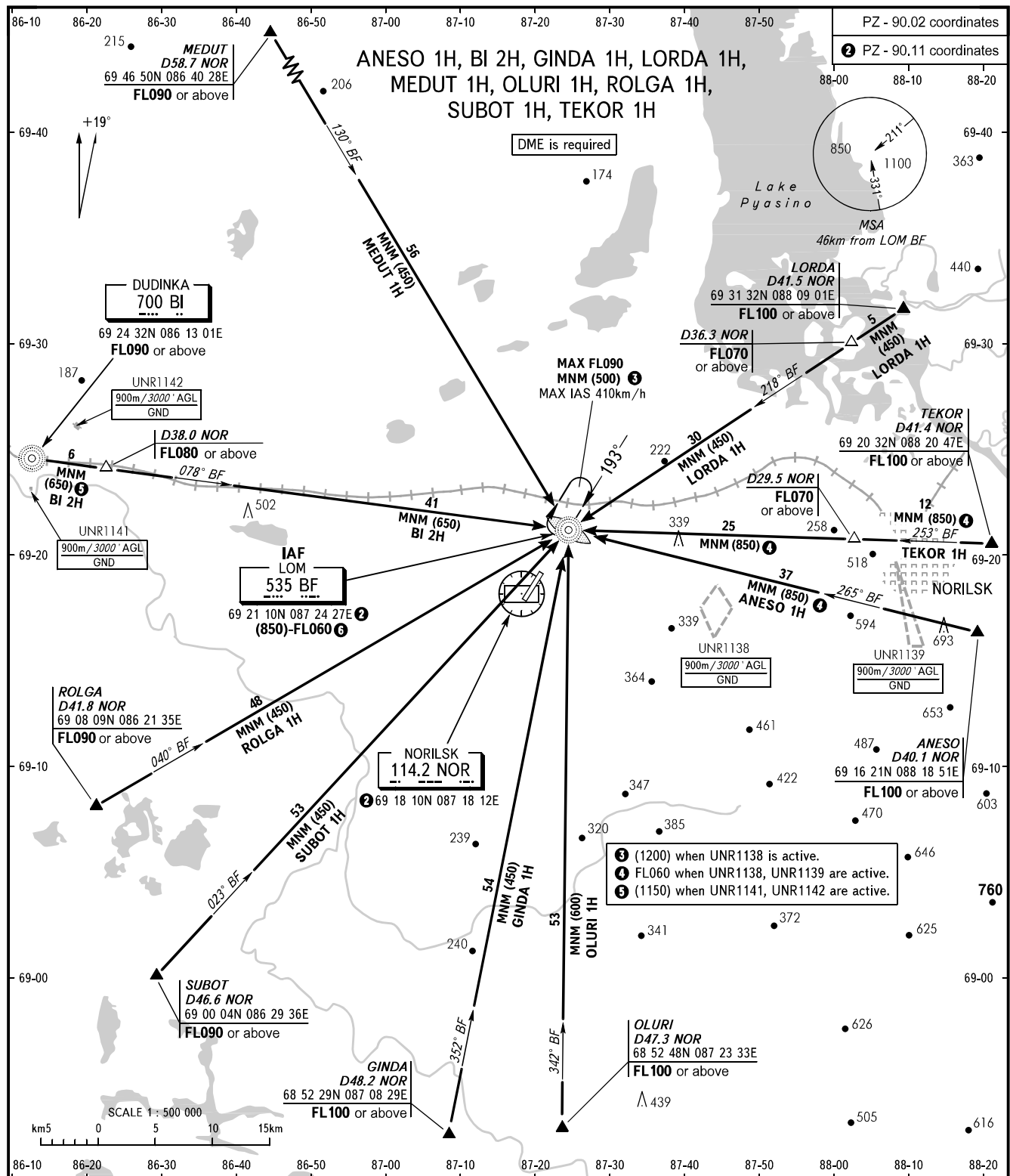
STANDARD ARRIVAL CHART  
INSTRUMENT (STAR) - ICAO

NORILSK, RUSSIA

ALYKEL

RWY 19

TRANSITION  
LEVEL: **1**



NORILSK PRECISION **118.300**  
NORILSK RADAR **120.400**  
NORILSK START **118.300**

**1** TRANSITION LEVEL:  
- FL060 when QFE is 744mm mercury column or above;  
- FL070 when QFE is 717mm mercury column or above,  
but less than 744mm mercury column;  
- FL080 when QFE is less than 717mm mercury column.

BEARINGS AND TRACKS ARE MAG.  
ELEVATIONS, ALTITUDES AND  
HEIGHTS IN METRES  
DISTANCES IN KILOMETRES

Alt set: - QFE (QNH on req);  
- mm (hPa on req).

**6** FL060 when UNR1138, UNR1139 are active (ANESO 1H, TEKOR 1H).  
(1150) when UNR1142 is active (BI 2H).