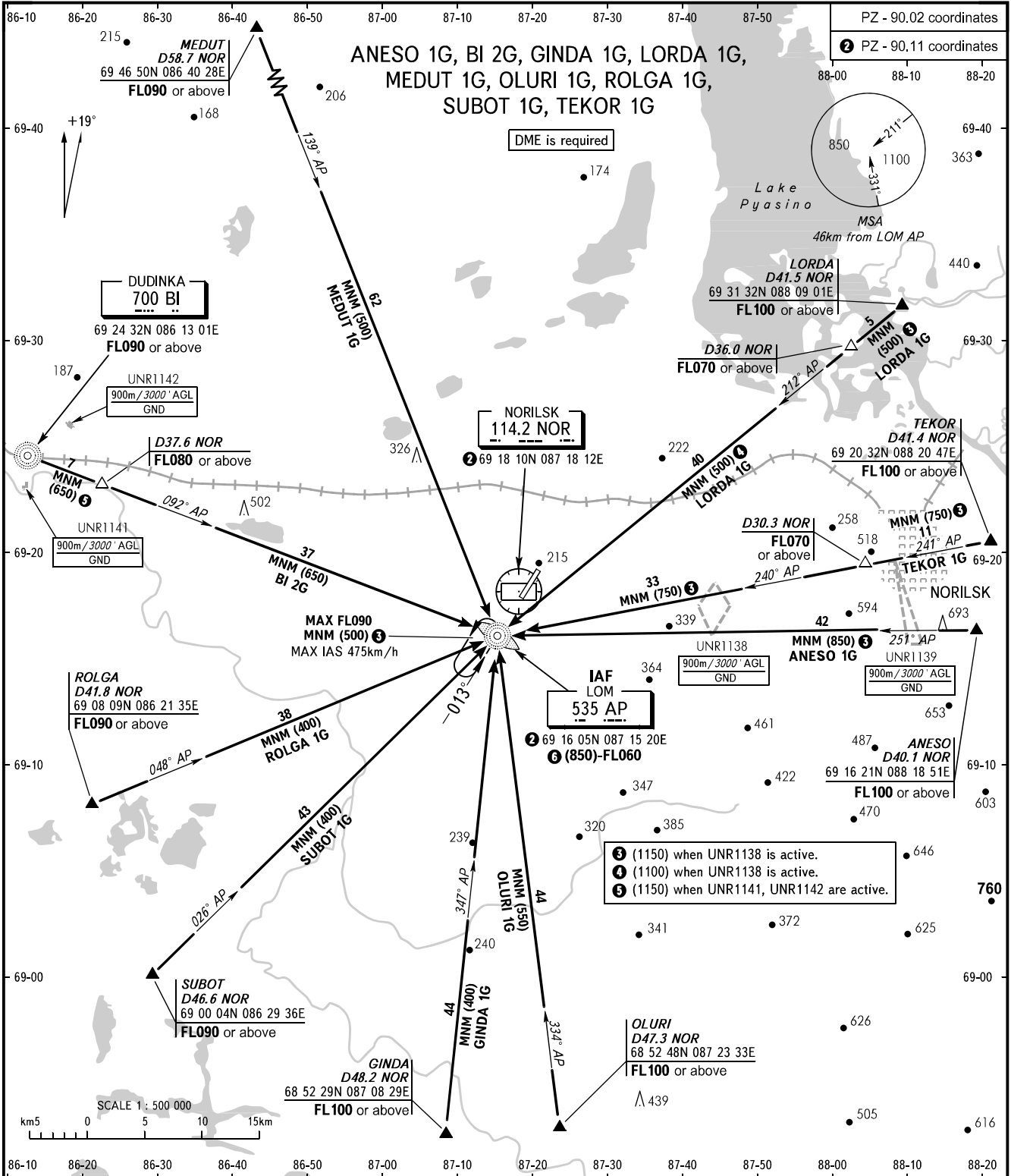


STANDARD ARRIVAL CHART
INSTRUMENT (STAR) - ICAO

NORILSK, RUSSIA
ALYKEL
RWY 01

TRANSITION
LEVEL: **1**



NORILSK PRECISION **118.300**
NORILSK RADAR **120.400**
NORILSK START **118.300**

1 TRANSITION LEVEL:
- FL060 when QFE is 744mm mercury column or above;
- FL070 when QFE is 717mm mercury column or above,
but less than 744mm mercury column;
- FL080 when QFE is less than 717mm mercury column.

BEARINGS AND TRACKS ARE MAG.
ELEVATIONS, ALTITUDES AND
HEIGHTS IN METRES
DISTANCES IN KILOMETRES

Alt set: - QFE (QNH on req);
- mm (hPa on req).

⑥ FL060 when UNR1138, UNR1139 are active (ANESO 1G, TEKOR 1G).
(1150) when UNR1142 is active (BI 2G).
(1100) when UNR1138 is active (LORDA 1G).

CHANGE: New chart