

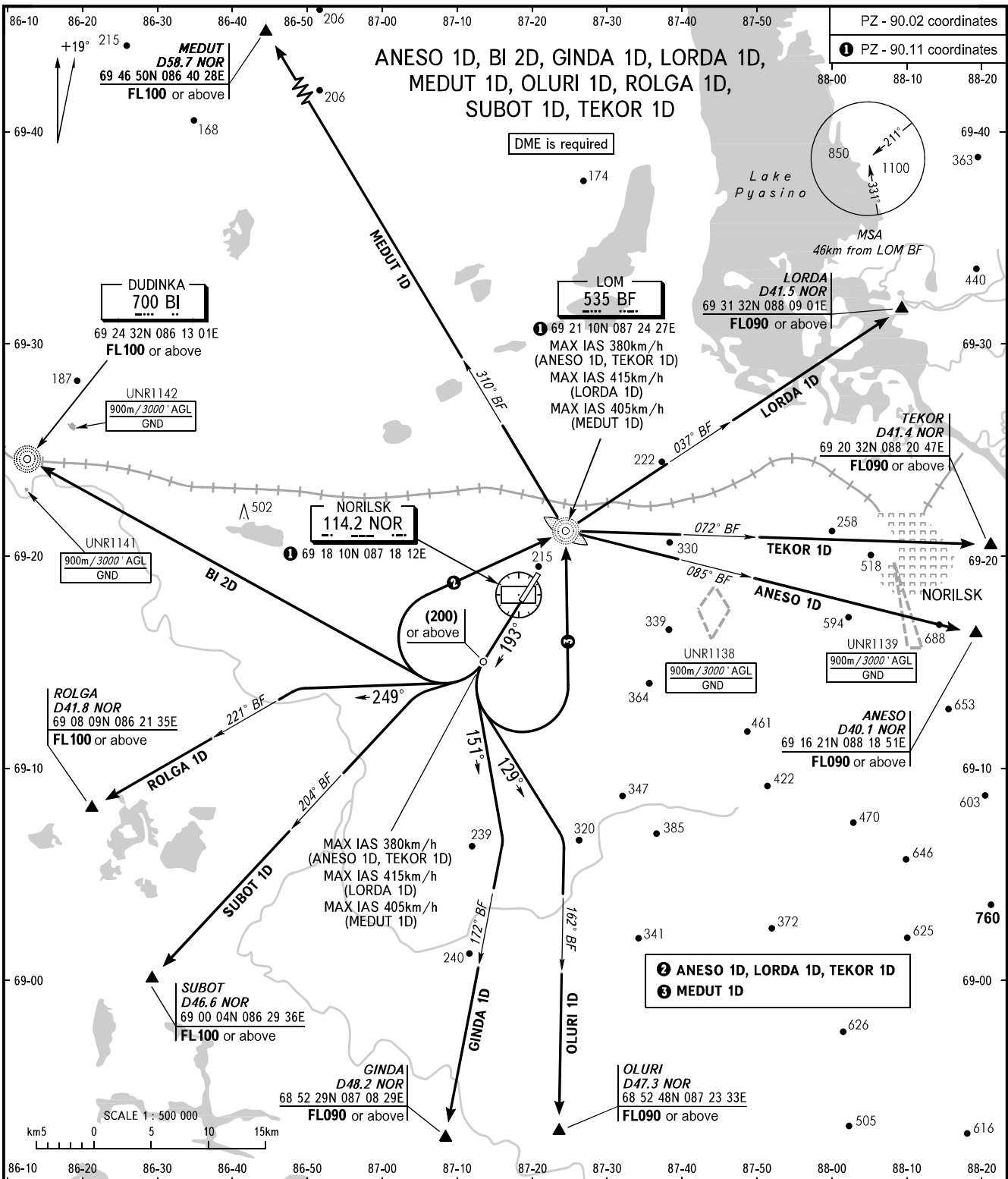
STANDARD DEPARTURE CHART
INSTRUMENT (SID) - ICAO

TRANSITION
HEIGHT : (1300)

NORILSK, RUSSIA

ALYKEL

RWY 19



<p>NORILSK START 118.300</p> <p>NORILSK RADAR 120.400</p>	<p>The minimum climb gradients due to the airspace structure:</p> <ul style="list-style-type: none"> - 3.5% for ANESO 1D; - 5.3% for GINDA 1D; - 3.8% for OLURI 1D; - 6.1% for SUBOT 1D; - 5.8% for BI 2D; - 3.6% for LORDA 1D; - 6.7% for ROLGA 1D; - 3.5% for TEKOR 1D. 	<p>The minimum climb gradients (when UNR1138, UNR1139 are active):</p> <ul style="list-style-type: none"> - 4.7% up to FL050 for ANESO 1D; - 4.6% up to FL050 for TEKOR 1D.
<p>BEARINGS AND TRACKS ARE MAG. ELEVATIONS, ALTITUDES AND HEIGHTS IN METRES DISTANCES IN KILOMETRES</p>	<p>Alt set: - QFE (QNH on req); - mm (hPa on req).</p>	<p>WARNING Turn before DER is PROHIBITED.</p>