

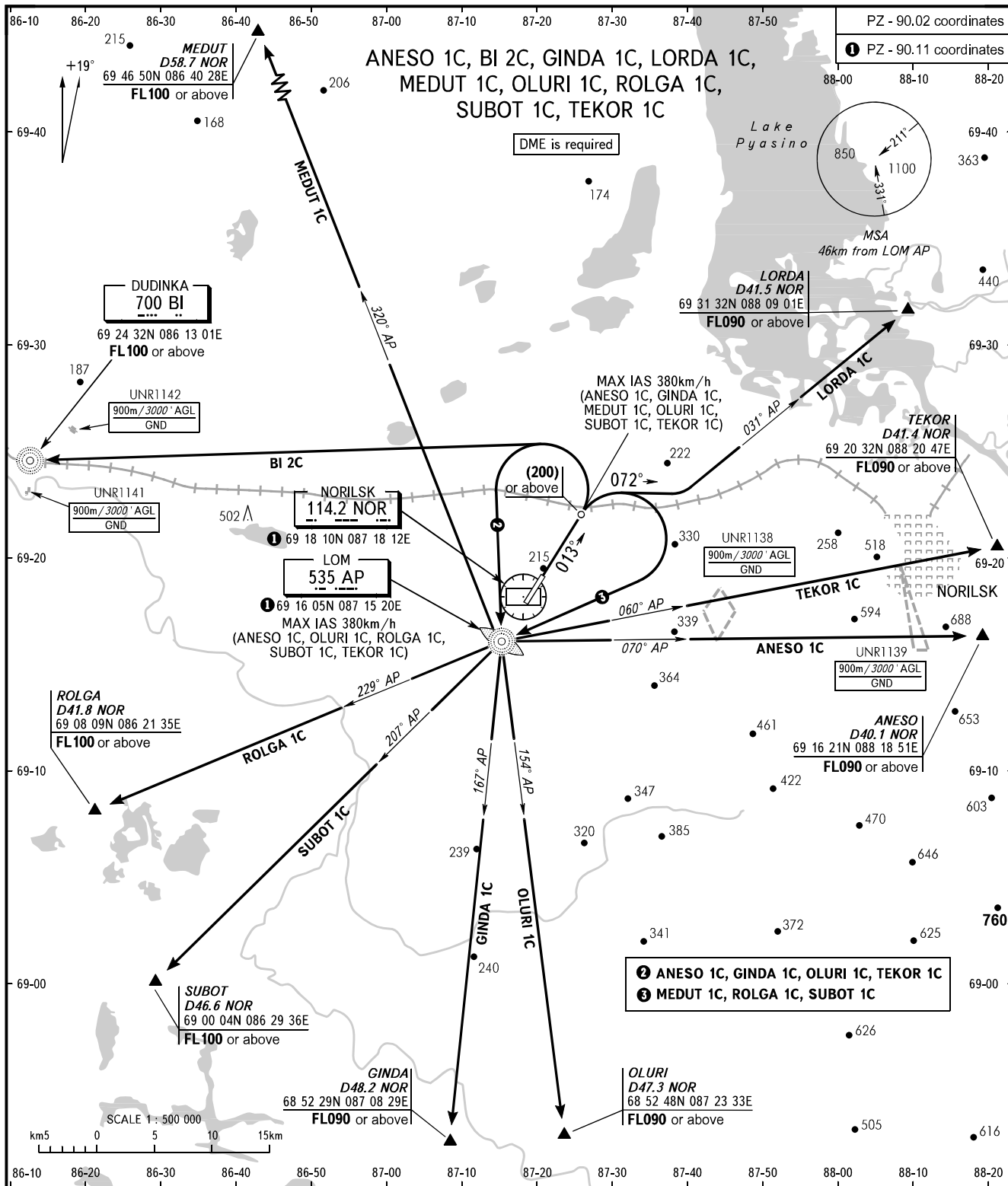
STANDARD DEPARTURE CHART  
INSTRUMENT (SID) - ICAO

TRANSITION  
HEIGHT : (1300)

NORILSK, RUSSIA

ALYKEL

RWY 01



NORILSK START 118.300  
NORILSK RADAR 120.400

The minimum climb gradients due to the airspace structure:

- 3.5% for ANESO 1C;
- 3.5% for GINDA 1C;
- 3.5% for OLURI 1C;
- 4.0% for SUBOT 1C;
- 5.0% for BI 2C;
- 6.6% for LORDA 1C;
- 4.2% for ROLGA 1C;
- 3.5% for TEKOR 1C.

The minimum climb gradients (when UNR1138, UNR1139 are active):

- 4.1% up to FL050 for ANESO 1C;
- 8.4% up to (1200) for MEDUT 1C;
- 8.4% up to (1200) for ROLGA 1C;
- 8.2% up to (1200) for SUBOT 1C;
- 4.1% up to FL050 for TEKOR 1C.

BEARINGS AND TRACKS ARE MAG. ELEVATIONS, ALTITUDES AND HEIGHTS IN METRES DISTANCES IN KILOMETRES

Alt set: - QFE (QNH on req);  
- mm (hPa on req).

**WARNING**  
Turn before DER is PROHIBITED.

CHANGE: New chart