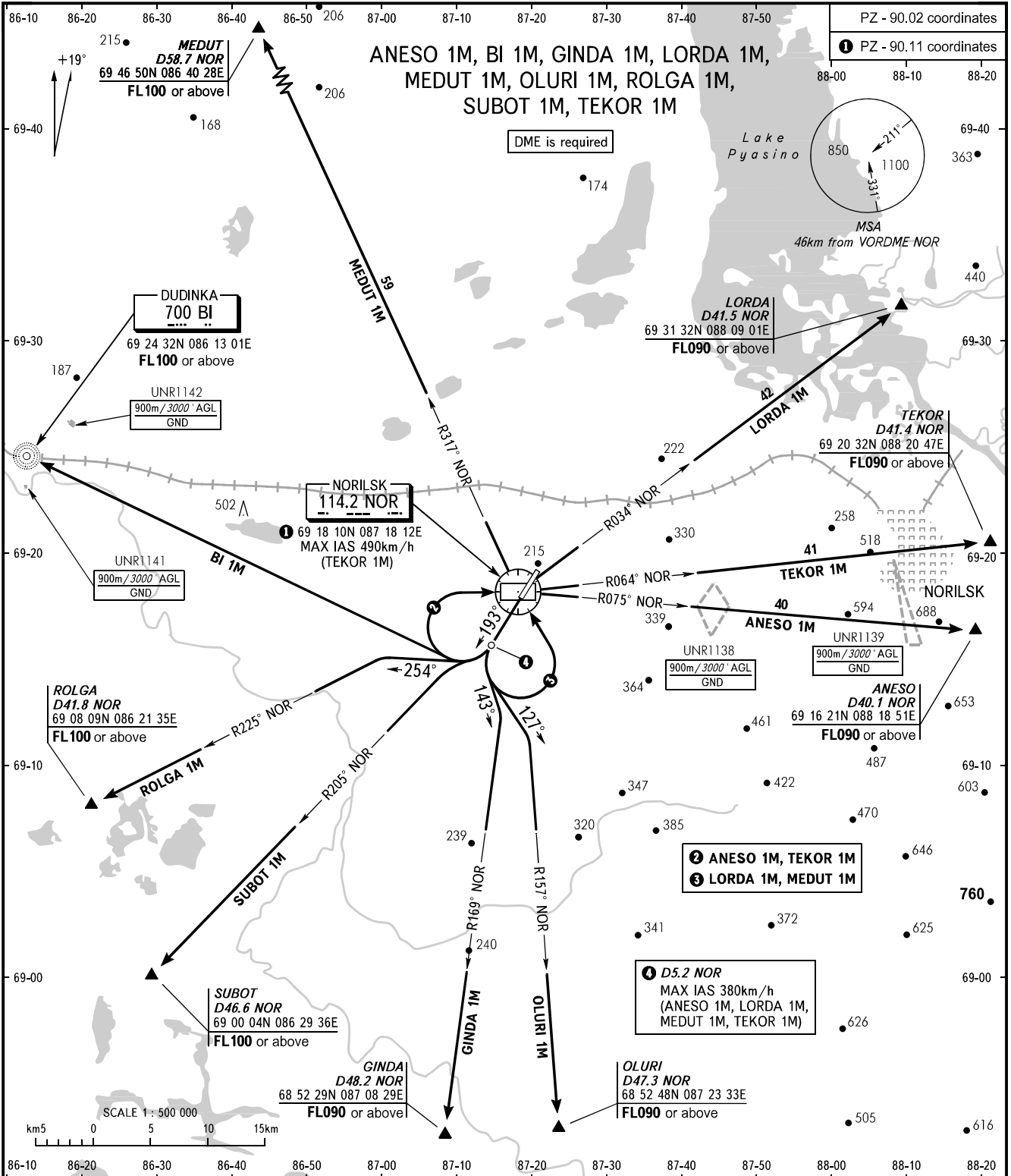


STANDARD DEPARTURE CHART
INSTRUMENT (SID) - ICAO

TRANSITION
HEIGHT : (1300)

NORILSK, RUSSIA
ALYKEL
RWY 19



PZ - 90.02 coordinates
PZ - 90.11 coordinates

2 ANESO 1M, TEKOR 1M
3 LORDA 1M, MEDUT 1M

4 D5.2 NOR
MAX IAS 380km/h
(ANESO 1M, LORDA 1M,
MEDUT 1M, TEKOR 1M)

NORILSK START 118.300
NORILSK RADAR 120.400

The minimum climb gradients (when UNR1138, UNR1139 are active):
- 4.9% up to (1250) for ANESO 1M;
- 6.6% up to (1250) for TEKOR 1M.

The minimum climb gradients due to the airspace structure:
- 3.8% up to FL090 for ANESO 1M;
- 5.8% up to FL100 for BI 1M;
- 5.4% up to FL090 for GINDA 1M;
- 3.9% up to FL090 for LORDA 1M;
- 3.4% up to FL100 for MEDUT 1M;
- 5.4% up to FL090 for OLURI 1M;
- 6.7% up to FL100 for ROLGA 1M;
- 6.2% up to FL100 for SUBOT 1M;
- 4.0% up to FL090 for TEKOR 1M.

BEARINGS AND TRACKS ARE MAG.
ELEVATIONS, ALTITUDES AND
HEIGHTS IN METRES
DISTANCES IN KILOMETRES

Alt set: - QFE (QNH on req);
- mm (hPa on req).

CHANGE: VORDME