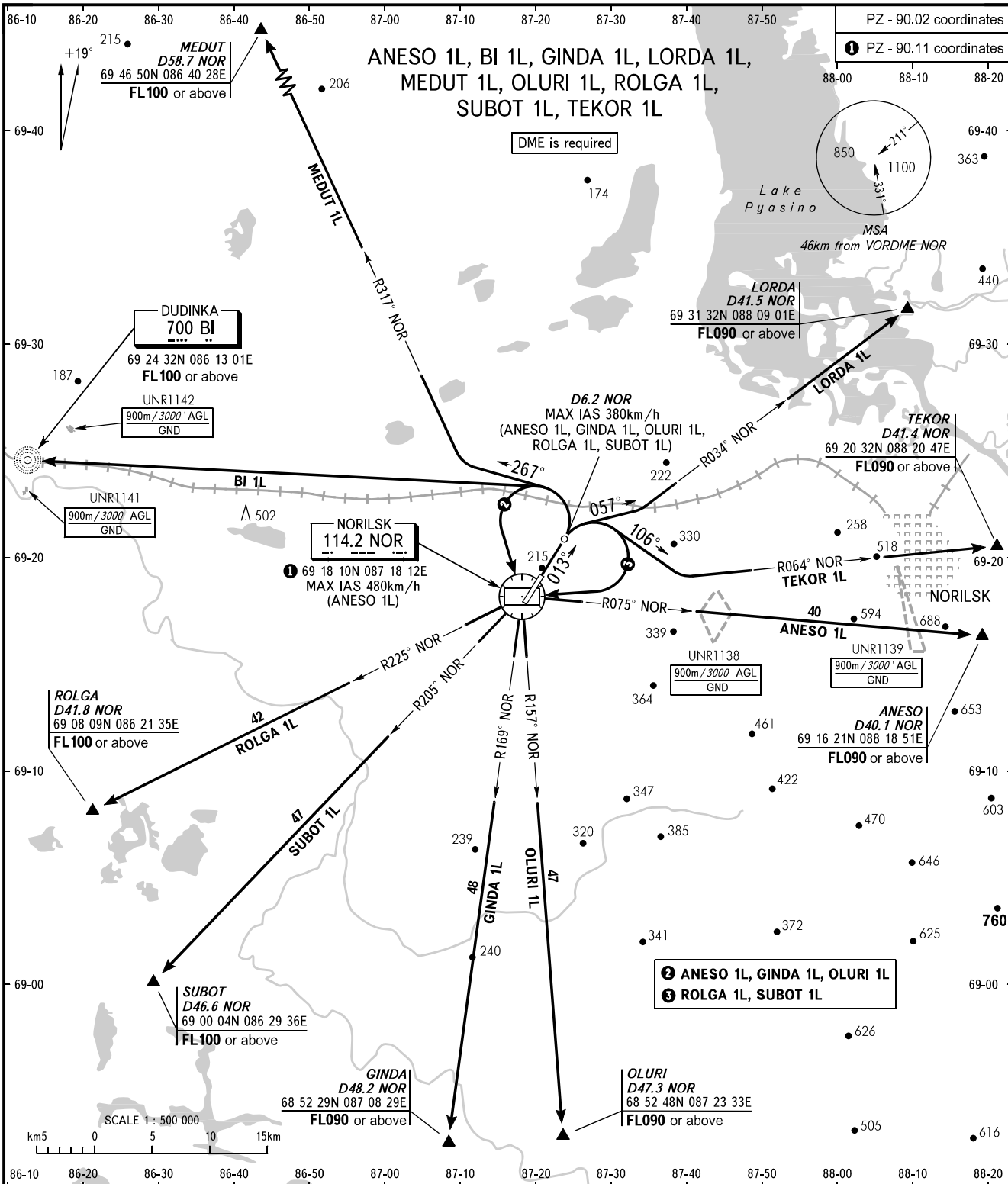


STANDARD DEPARTURE CHART
INSTRUMENT (SID) - ICAO

TRANSITION
HEIGHT : (1300)

NORILSK, RUSSIA
ALYKEL
RWY 01



NORILSK START 118.300
NORILSK RADAR 120.400

The minimum climb gradients (when UNR1138, UNR1139 are active):
- 4.8% up to (1250) for ANESO 1L;
- 4.8% up to (1200) for TEKOR 1L.

The minimum climb gradients due to the airspace structure:
- 3.8% up to FL090 for ANESO 1L;
- 5.2% up to FL100 for BI 1L;
- 3.4% up to FL090 for GINDA 1L;
- 7.0% up to FL090 for LORDA 1L;
- 4.6% up to FL100 for MEDUT 1L;
- 3.4% up to FL090 for OLURI 1L;
- 4.4% up to FL100 for ROLGA 1L;
- 3.9% up to FL100 for SUBOT 1L;
- 6.5% up to FL090 for TEKOR 1L.

BEARINGS AND TRACKS ARE MAG.
ELEVATIONS, ALTITUDES AND
HEIGHTS IN METRES
DISTANCES IN KILOMETRES

Alt set: - QFE (QNH on req);
- mm (hPa on req).