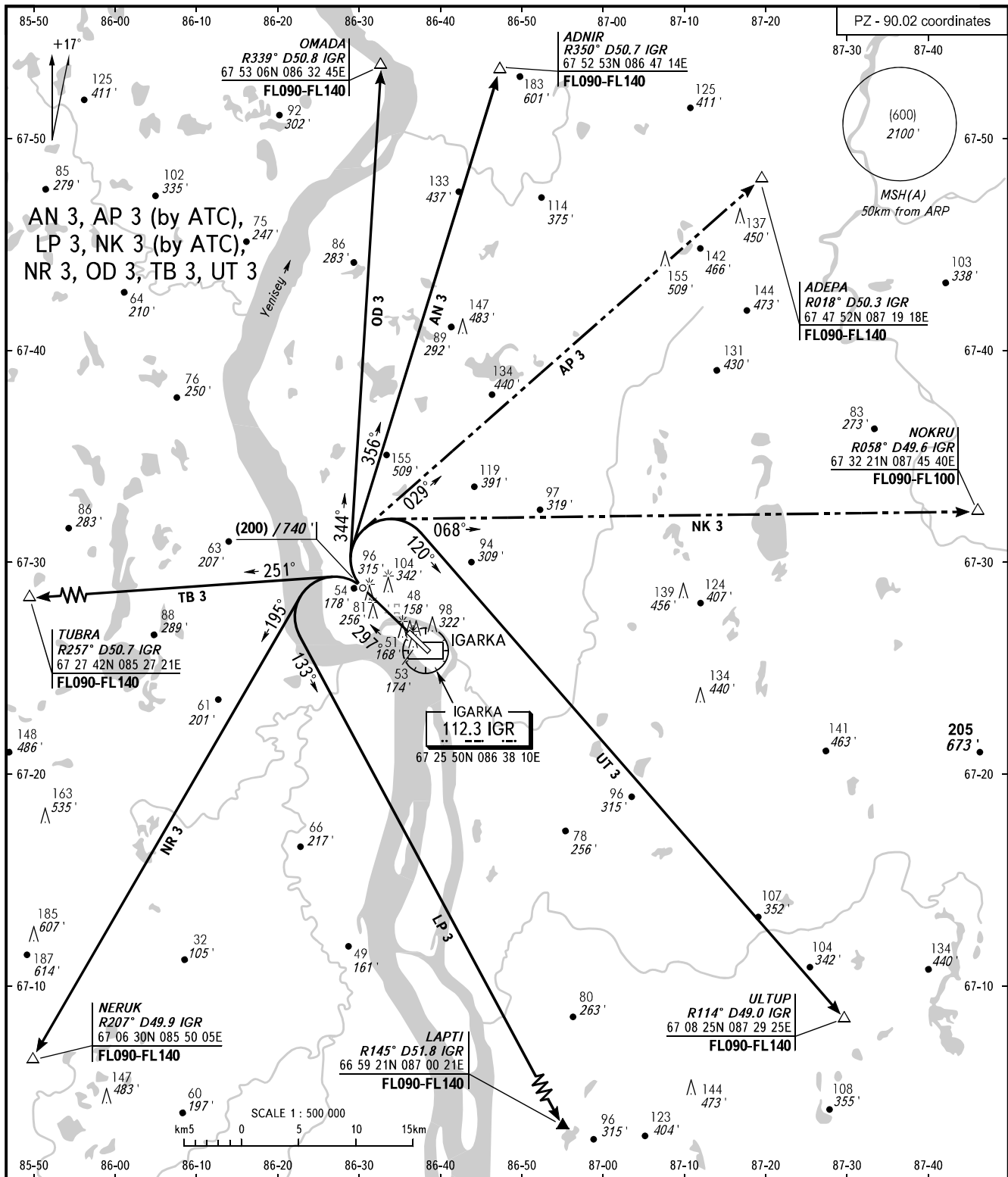


STANDARD DEPARTURE CHART
INSTRUMENT (SID) - ICAO

IGARKA, RUSSIA
IGARKA
RWY 30

TRANSITION
HEIGHT: (600)



PODKHOD 124.200

WARNING
MNM climb gradients:
- 3.9% for CRP ULTUP;
- 4.1% for CRP LAPTI;
- 4.8% for CRP NERUK, NOKRU;
- 5.0% for CRP ADEPA;
- 5.4% for CRP ADNIR;
- 5.5% for CRP OMADA, TUBRA.

BEARINGS AND TRACKS ARE MAGNETIC
ALTITUDES AND ELEVATIONS IN METRES AND FEET
HEIGHTS IN METRES
DISTANCES IN KILOMETRES

Alt set: -QFE(QNH on req);
-mm(hPa on req).