

**INSTRUMENT
APPROACH
CHART - ICAO**

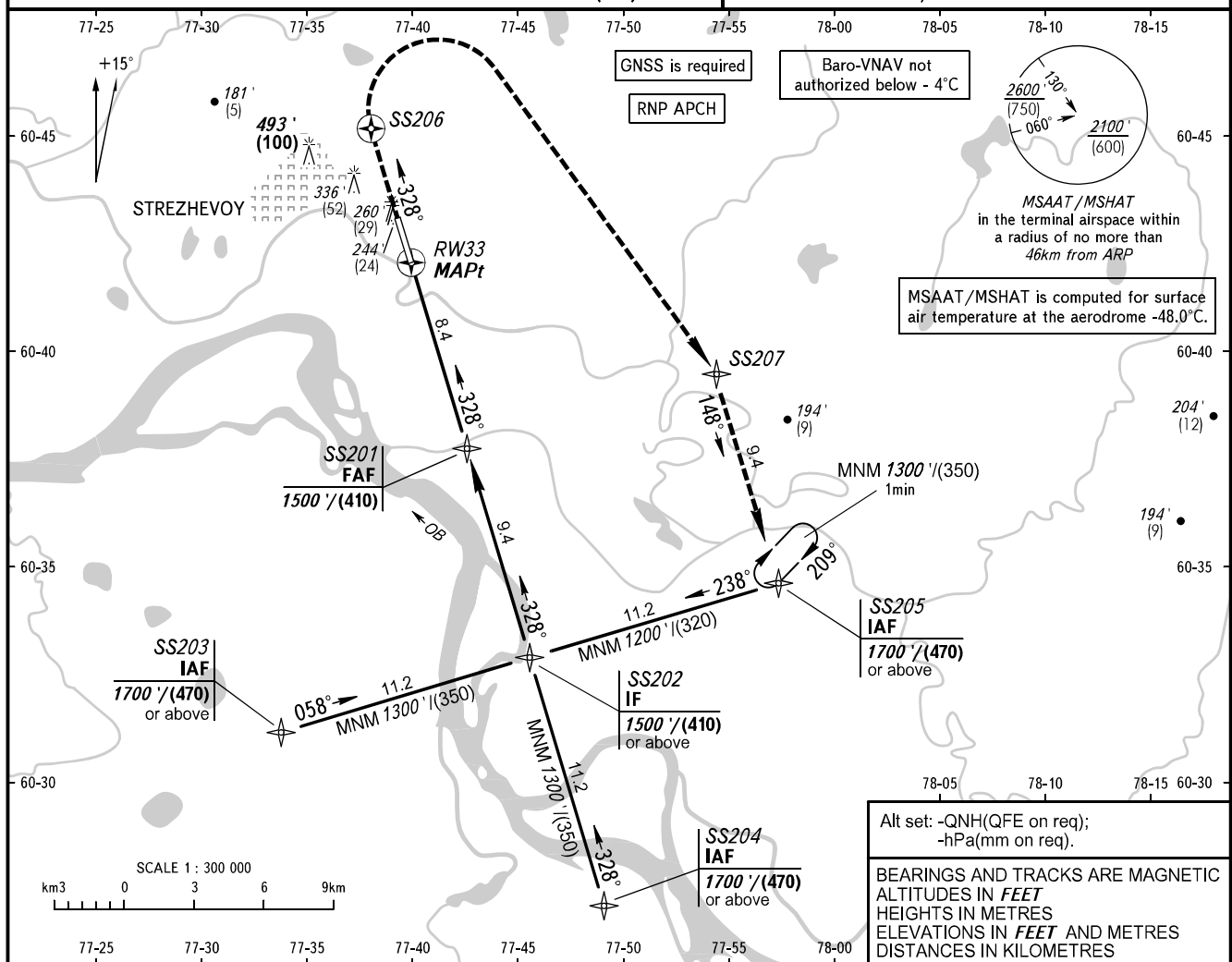
KARAVAY RADAR 120.700

**STREZHEVOY, RUSSIA
STREZHEVOY
RNP RWY 33**

TRANSITION LEVEL: **1**

TRANSITION ALT: **3000'**
TRANSITION HGT: **(865)**

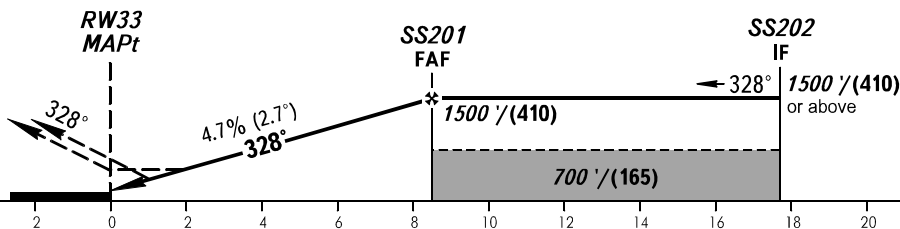
AD ELEV: **165' / 50m**
THR ELEV: **162' / 49.5m**



DIST to RW33	2.0	4.0	6.0	8.0	8.4
ALTITUDE/HEIGHT	522' / (110)	831' / (205)	1141' / (300)	1450' / (390)	1500' / (410)

MISSED APPROACH

Climb straight ahead to SS206, turn RIGHT to SS207, then to SS205 climbing to 1500' / (410) or above.



OCA(H)		A	B	C	D	TRANSITION LEVEL:					
Straight-in Approach	LNAV	490' (330') (105)	490' (330') (105)	510' (350') (110)	510' (350') (110)	- FL040 when QNH is 1013 hPa (760mm mercury column) or above;					
	LNAV/VNAV	370' (210') (65)	380' (220') (70)	390' (230') (75)	400' (240') (75)	- FL050 when QNH is 977 hPa (733mm mercury column) or above, but less than 1013 hPa (760mm mercury column);					
Circling		640' (470') (145)	790' (630') (195)	890' (730') (225)	890' (730') (225)	- FL060 when QNH is less than 977 hPa (733mm mercury column).					
GROUND SPEED		km/h	150	180	210	240	270	300	330	360	390
RATE OF DESCENT		m/s	2.0	2.4	2.8	3.1	3.5	3.9	4.3	4.7	5.1
		ft/min	387	464	542	619	696	774	851	928	1006