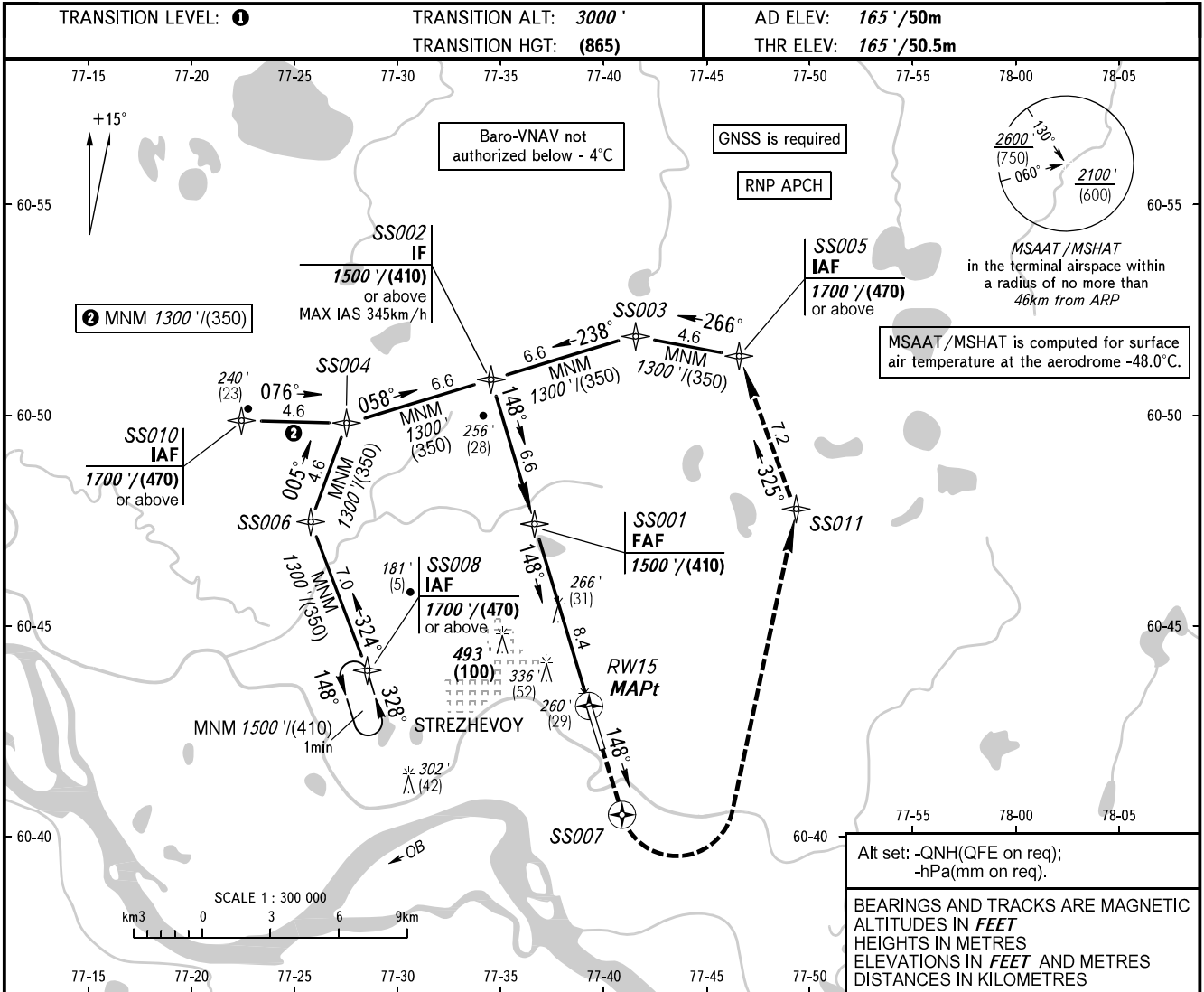


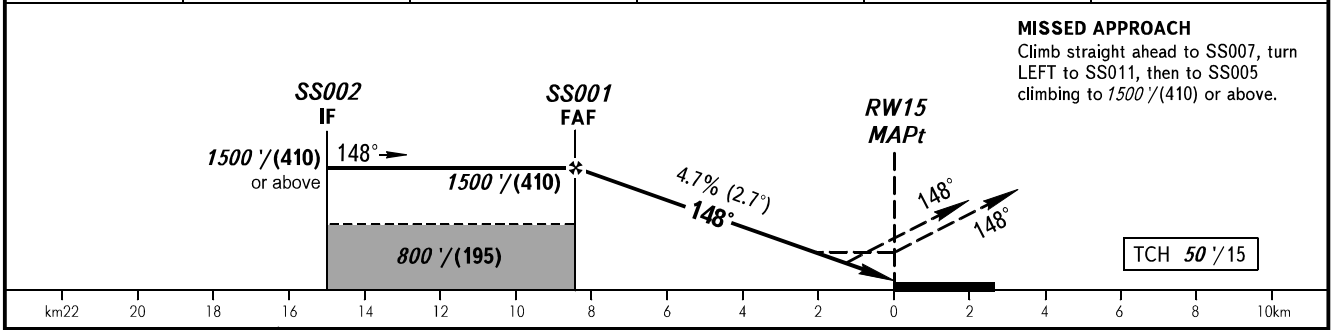
**INSTRUMENT
APPROACH
CHART - ICAO**

KARAVAY RADAR 120.700

**STREZHEVOY, RUSSIA
STREZHEVOY
RNP RWY 15**



| | | | | | |
|-----------------|-------------|-------------|-------------|------------|------------|
| DIST to RW15 | 8.3 | 8.0 | 6.0 | 4.0 | 2.0 |
| ALTITUDE/HEIGHT | 1500'/(410) | 1453'/(390) | 1144'/(300) | 834'/(205) | 525'/(110) |



| | | | | | | | | | | |
|-------------------|--------|---|-----|-----|-----|-----|-----|-----|-----|------|
| TRANSITION LEVEL: | | ① TRANSITION LEVEL: | | | | | | | | |
| | | - FL040 when QNH is 1013 hPa (760mm mercury column) or above; | | | | | | | | |
| | | - FL050 when QNH is 977 hPa (733mm mercury column) or above, but less than 1013 hPa (760mm mercury column); | | | | | | | | |
| | | - FL060 when QNH is less than 977 hPa (733mm mercury column). | | | | | | | | |
| NOTE | | HGT is given relative to AD ELEV 165'/50m. | | | | | | | | |
| GROUND SPEED | km/h | 150 | 180 | 210 | 240 | 270 | 300 | 330 | 360 | 390 |
| RATE OF DESCENT | m/s | 2.0 | 2.4 | 2.8 | 3.1 | 3.5 | 3.9 | 4.3 | 4.7 | 5.1 |
| | ft/min | 387 | 464 | 542 | 619 | 696 | 774 | 851 | 928 | 1006 |

CHANGE: New chart