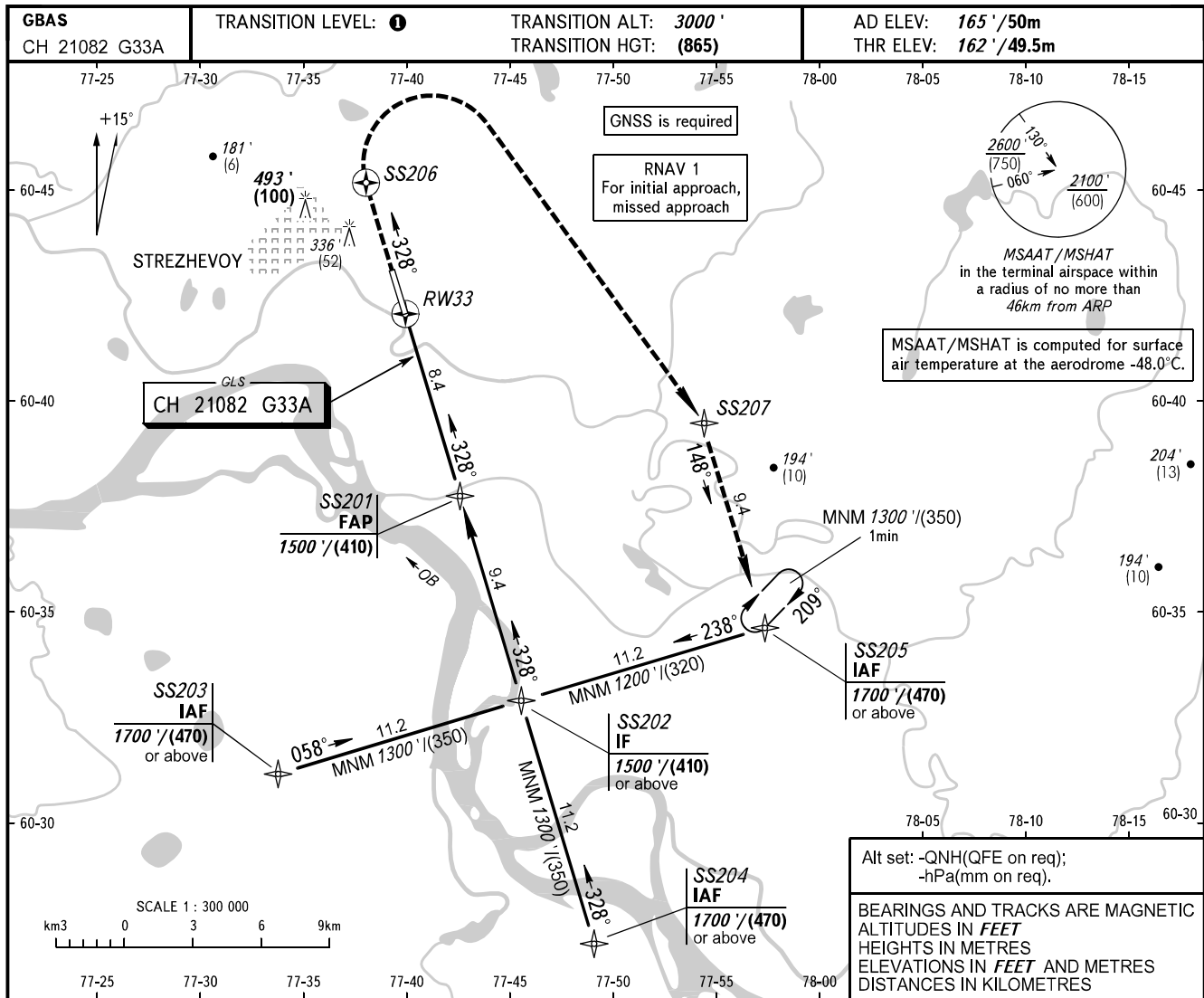


INSTRUMENT
APPROACH
CHART - ICAO

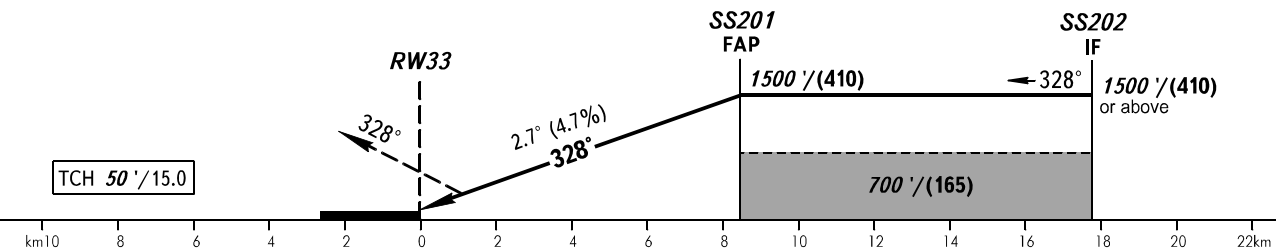
KARAVAY RADAR 120.700

STREZHEVOY, RUSSIA
STREZHEVOY
GLS RWY 33



MISSED APPROACH

Climb straight ahead to SS206, turn
RIGHT to SS207, then to SS205
climbing to 1500'/(410) or above.



OCA(H)		A	B	C	D	① TRANSITION LEVEL:					
Straight-in Approach	CAT I	339' (177')	351' (189')	359' (197')	370' (208')	- FL040 when QNH is 1013 hPa (760mm mercury column) or above; - FL050 when QNH is 977 hPa (733mm mercury column) or above, but less than 1013 hPa (760mm mercury column); - FL060 when QNH is less than 977 hPa (733mm mercury column).					
		(54)	(58)	(61)	(64)						
Circling		640' (470')	790' (630')	890' (730')	890' (730')						
GROUND SPEED	km/h		150	180	210	240	270	300	330	360	390
RATE OF DESCENT	m/s		2.0	2.4	2.8	3.1	3.5	3.9	4.3	4.7	5.1
	ft/min		387	464	542	619	696	774	851	928	1006