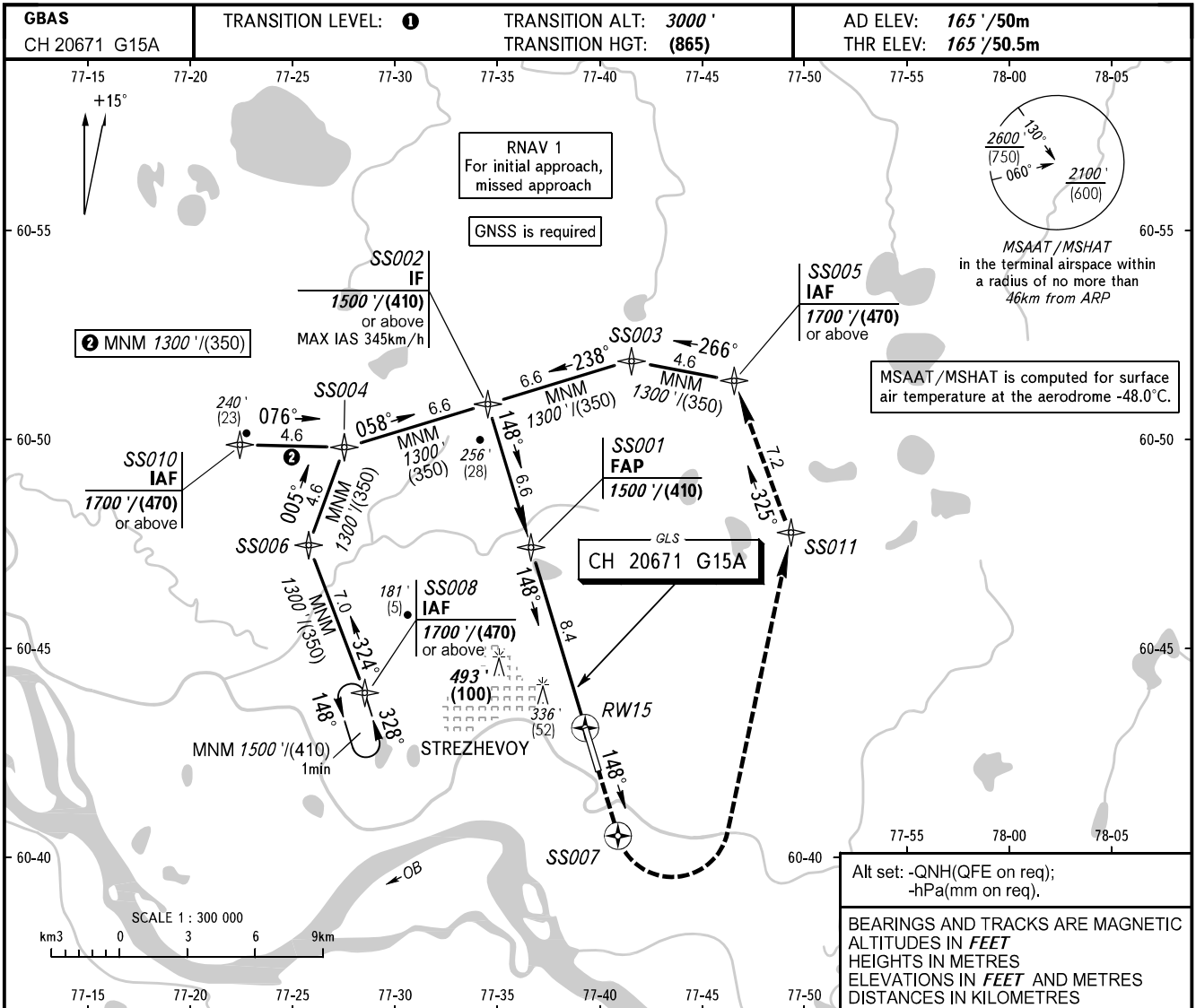


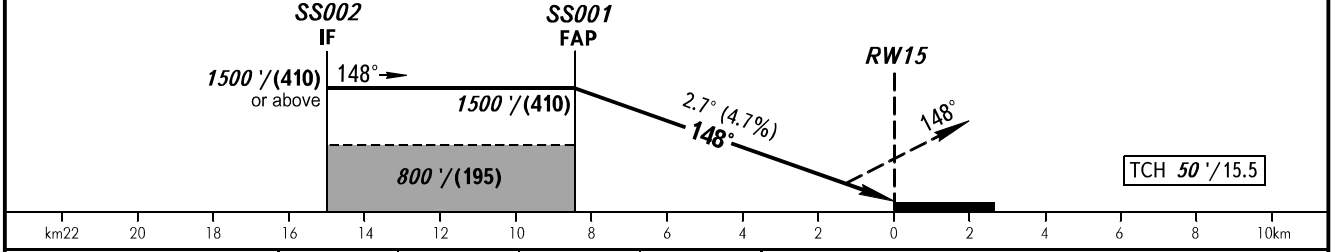
**INSTRUMENT
APPROACH
CHART - ICAO**

KARAVAY RADAR 120.700

**STREZHEVOY, RUSSIA
STREZHEVOY
GLS RWY 15**



MISSED APPROACH
Climb straight ahead to SS007, turn LEFT to SS011, then to SS005 climbing to 1500' (410) or above.



OCA(H)		A	B	C	D						
Straight-in Approach	CAT I	354' (188') (58)	366' (200') (61)	374' (208') (64)	385' (219') (67)	① TRANSITION LEVEL: - FL040 when QNH is 1013 hPa (760mm mercury column) or above; - FL050 when QNH is 977 hPa (733mm mercury column) or above, but less than 1013 hPa (760mm mercury column); - FL060 when QNH is less than 977 hPa (733mm mercury column).					
		640' (470') (145)	790' (630') (195)	890' (730') (225)	890' (730') (225)						
Circling		640' (470') (145)	790' (630') (195)	890' (730') (225)	890' (730') (225)						
GROUND SPEED		km/h	150	180	210	240	270	300	330	360	390
RATE OF DESCENT		m/s	2.0	2.4	2.8	3.1	3.5	3.9	4.3	4.7	5.1
		ft/min	387	464	542	619	696	774	851	928	1006

CHANGE: New chart