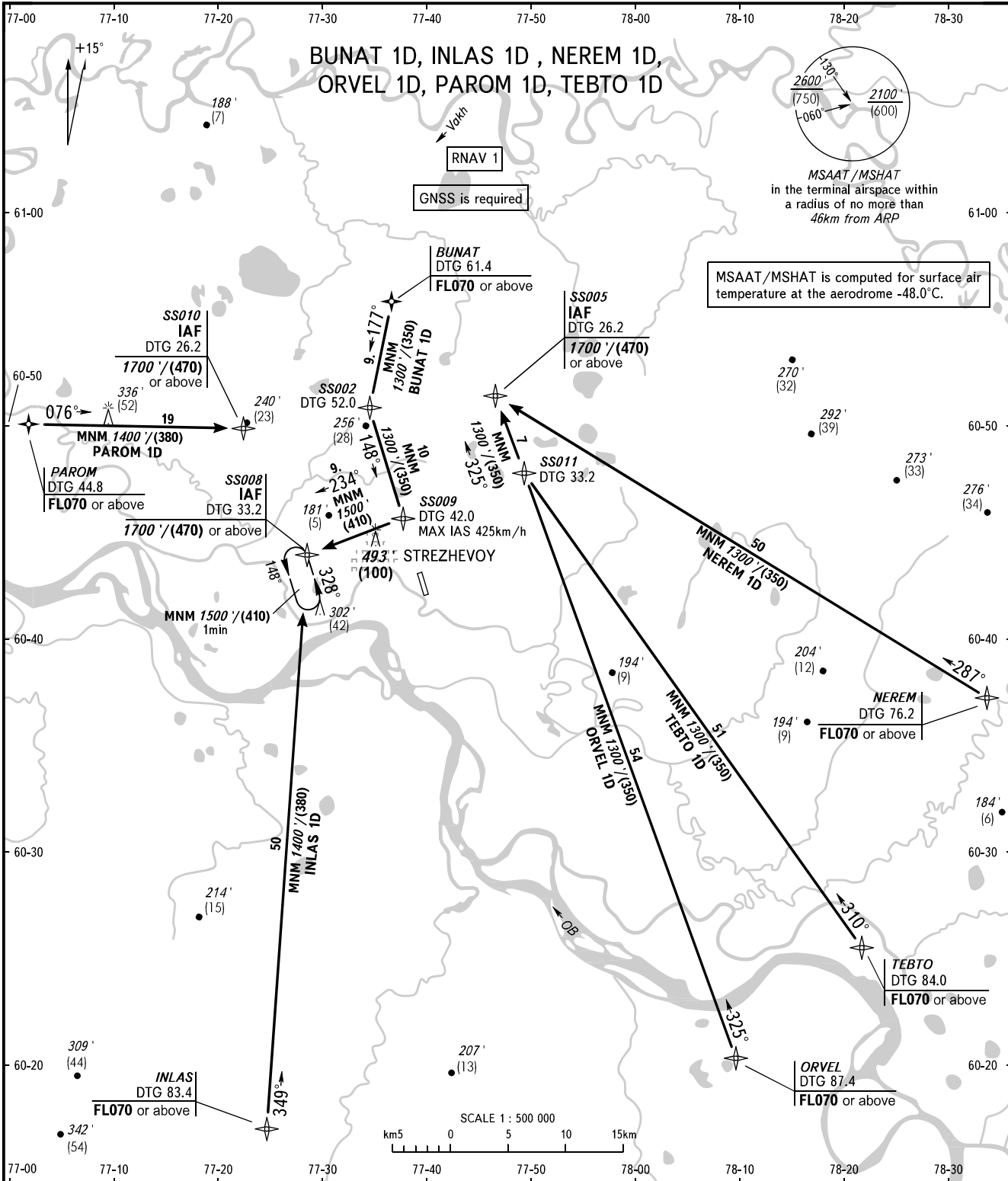


STANDARD ARRIVAL CHART  
INSTRUMENT (STAR) - ICAO

STREZHEVOY, RUSSIA  
STREZHEVOY  
RNAV RWY 15

TRANSITION  
LEVEL : 1



KARAVAY RADAR 120.700

**NOTE:**

- HGT is given relative to AD ELEV 165' / 50m.
- CDO are applied if there is no conflicting traffic.
- CDO can be cancelled by ATS unit in case of necessity to provide separation.
- In case of high air traffic intensity ATS unit issues each clearance if possible in advance in order to provide CDO.

**1 TRANSITION LEVEL:**

- FL040 when QNH is 1013 hPa (760mm mercury column) or above;
- FL050 when QNH is 977 hPa (733mm mercury column) or above, but less than 1013 hPa (760mm mercury column);
- FL060 when QNH is less than 977 hPa (733mm mercury column).

BEARINGS AND TRACKS ARE MAGNETIC  
ALTITUDES IN FEET  
HEIGHTS IN METRES  
ELEVATIONS IN FEET AND METRES  
DISTANCES IN KILOMETRES

Alt set: -QNH(QFE on req);  
-hPa(mm on req).