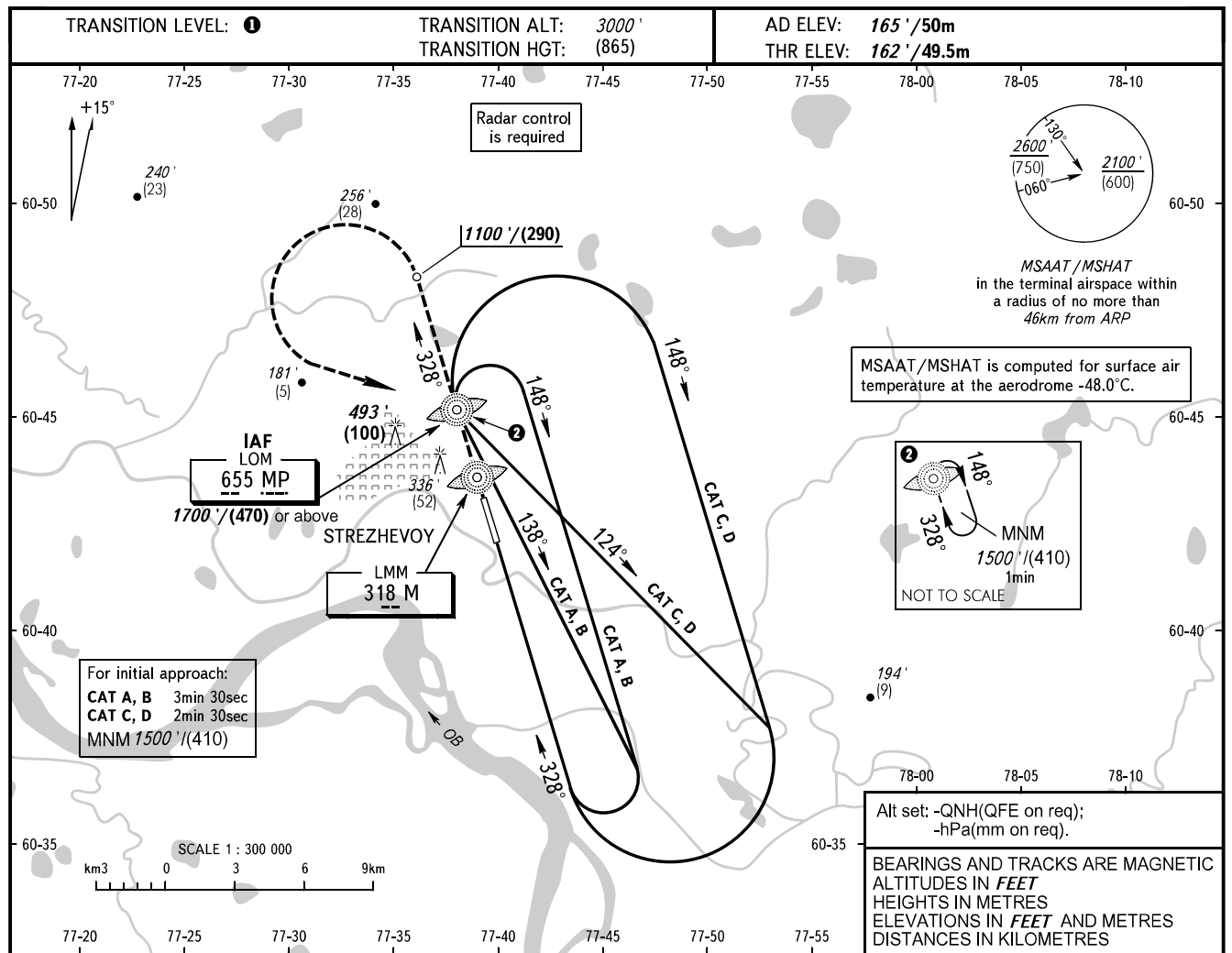


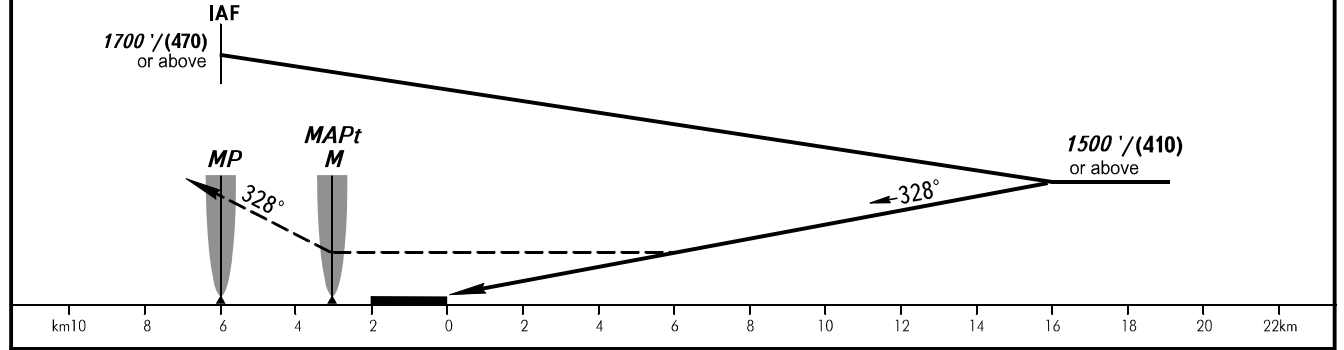
**INSTRUMENT
APPROACH
CHART - ICAO**

KARAVAY RADAR 120.700

STREZHEVOY, RUSSIA
STREZHEVOY
NDB Y RWY 33



MISSED APPROACH
Climb straight ahead to 1100'/(290),
turn LEFT to LOM MP climbing to
1500'/(410) or above.



OCA(H)		A	B	C	D
Straight-in Approach	LMM	700' (530') (165)	700' (530') (165)	700' (530') (165)	700' (530') (165)
Circling		700' (540') (165)	790' (630') (195)	890' (730') (225)	890' (730') (225)

1 TRANSITION LEVEL:
- FL040 when QNH is 1013 hPa (760mm mercury column) or above;
- FL050 when QNH is 977 hPa (733mm mercury column) or above,
but less than 1013 hPa (760mm mercury column);
- FL060 when QNH is less than 977 hPa (733mm mercury column).
NOTE:
1. HGT is given relative to AD ELEV 165'/50m.
2. Turn before passing LOM MP during missed approach is PROHIBITED.