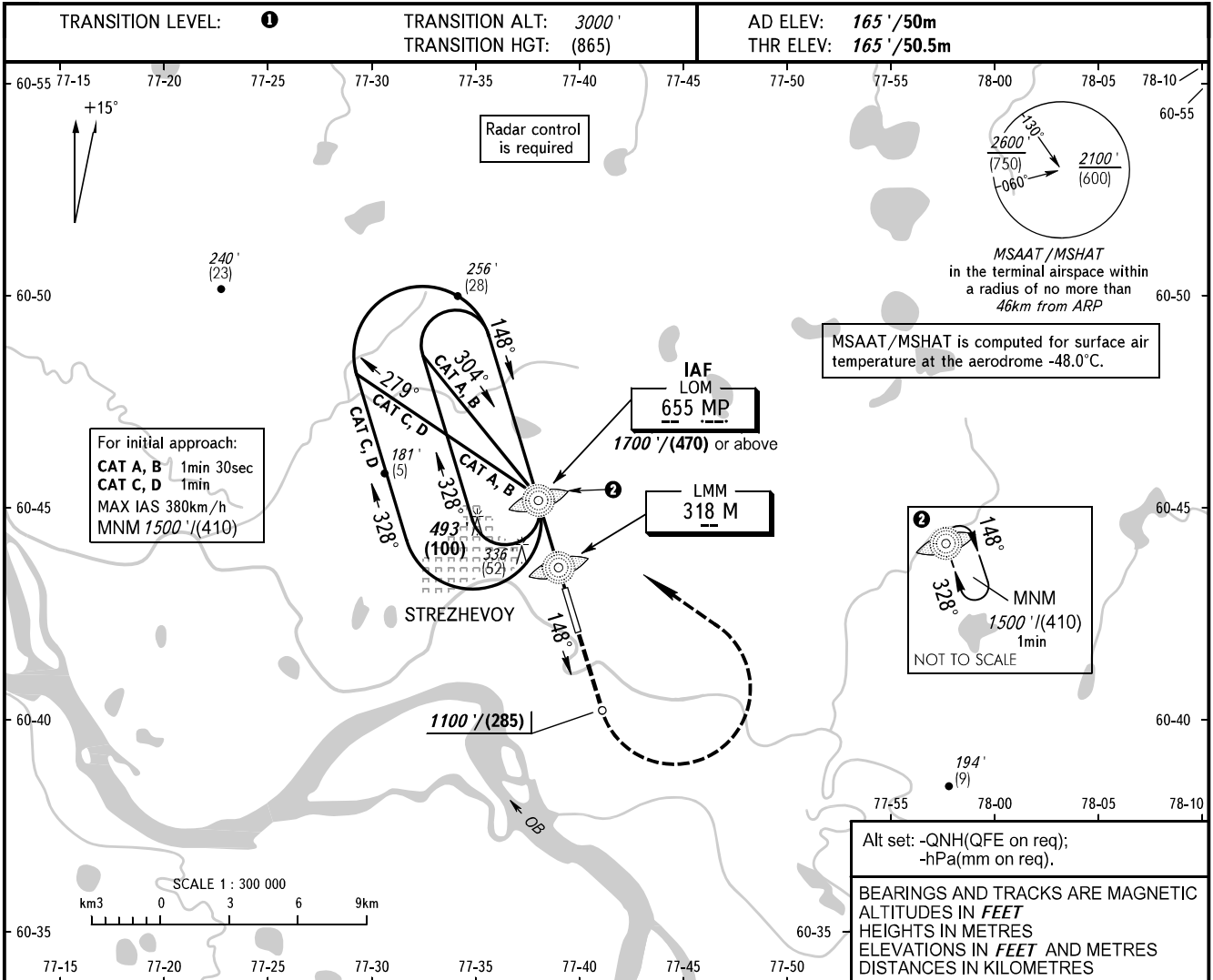


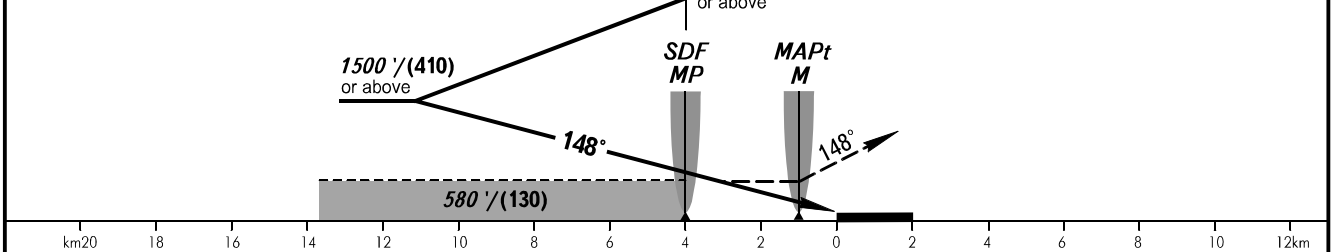
**INSTRUMENT
APPROACH
CHART - ICAO**

KARAVAY RADAR 120.700

STREZHEVOY, RUSSIA
STREZHEVOY
NDB Y RWY 15



MISSED APPROACH
Climb straight ahead to 1100'/(285), turn LEFT to LOM MP climbing to 1500'/(410) or above.



OCA(H)		A	B	C	D
Straight-in Approach	With SDF	530' (370') (115)	530' (370') (115)	530' (370') (115)	530' (370') (115)
	WO SDF	580' (420') (130)	580' (420') (130)	580' (420') (130)	580' (420') (130)
Circling		640' (470') (145)	790' (630') (195)	890' (730') (225)	890' (730') (225)

TRANSITION LEVEL:
- FL040 when QNH is 1013 hPa (760mm mercury column) or above;
- FL050 when QNH is 977 hPa (733mm mercury column) or above, but less than 1013 hPa (760mm mercury column);
- FL060 when QNH is less than 977 hPa (733mm mercury column).

NOTE
HGT is given relative to AD ELEV 165' /50m.

CHANGE: New chart