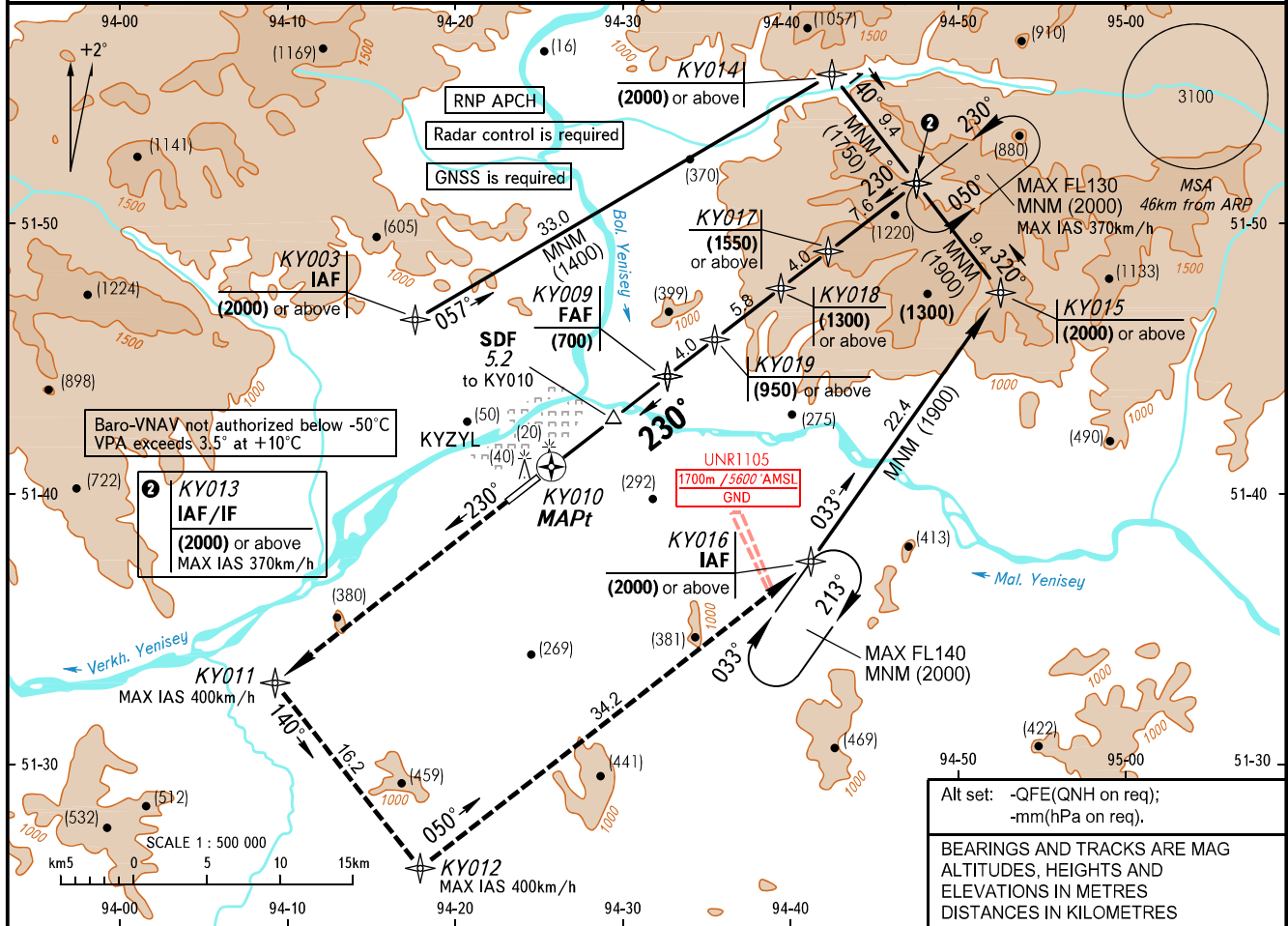


INSTRUMENT
APPROACH
CHART - ICAO

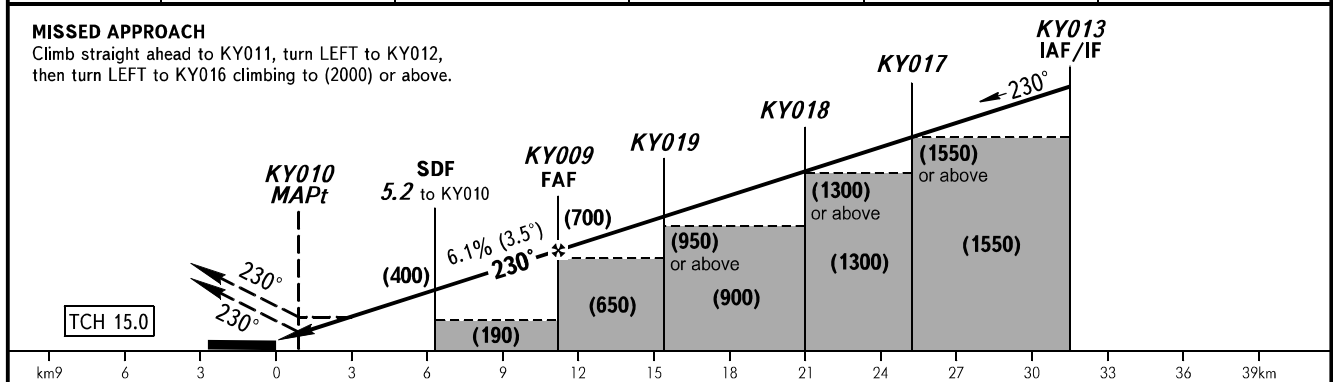
TOWER 120.700

KYZYL, RUSSIA
KYZYL
RNP RWY 23

TRANSITION LEVEL: **1**
TRANSITION HEIGHT: (2600)
AD ELEV: 649m
THR ELEV: 647m



DIST to KY010	2.0	4.0	6.0	8.0	10.0
HEIGHT	(205)	(330)	(450)	(575)	(700)



OCA(H)		A	B	C	D	
Straight-in Approach	LNAV/VNAV	2.5%*	870(225)	885(240)	950(305)	960(315)
		3.0%*	730(85)	735(90)	735(90)	740(95)
	LNAV	2.5%*	1005(360)	1005(360)	1005(360)	1005(360)
		2.8%*	815(170)	815(170)	815(170)	815(170)
Circling		1005(360)	1025(375)	1170(525)	1250(600)	

*MNM climb gradient for missed APCH.

1 TRANSITION LEVEL:
- FL 120 when QFE is 701mm mercury column or above;
- FL 130 when QFE is 674mm mercury column or above, but less than 701mm mercury column;
- FL 140 when QFE is less than 674mm mercury column.

NOTE
Level flight segment is not AVBL on intermediate approach segment.

WARNING
Heavy turbulence with down-draughts may be experienced on final.

GROUND SPEED	km/h	150	180	210	240	270	300	330	360	390
RATE OF DESCENT	m/s	2.5	3.1	3.6	4.1	4.6	5.1	5.6	6.1	6.6