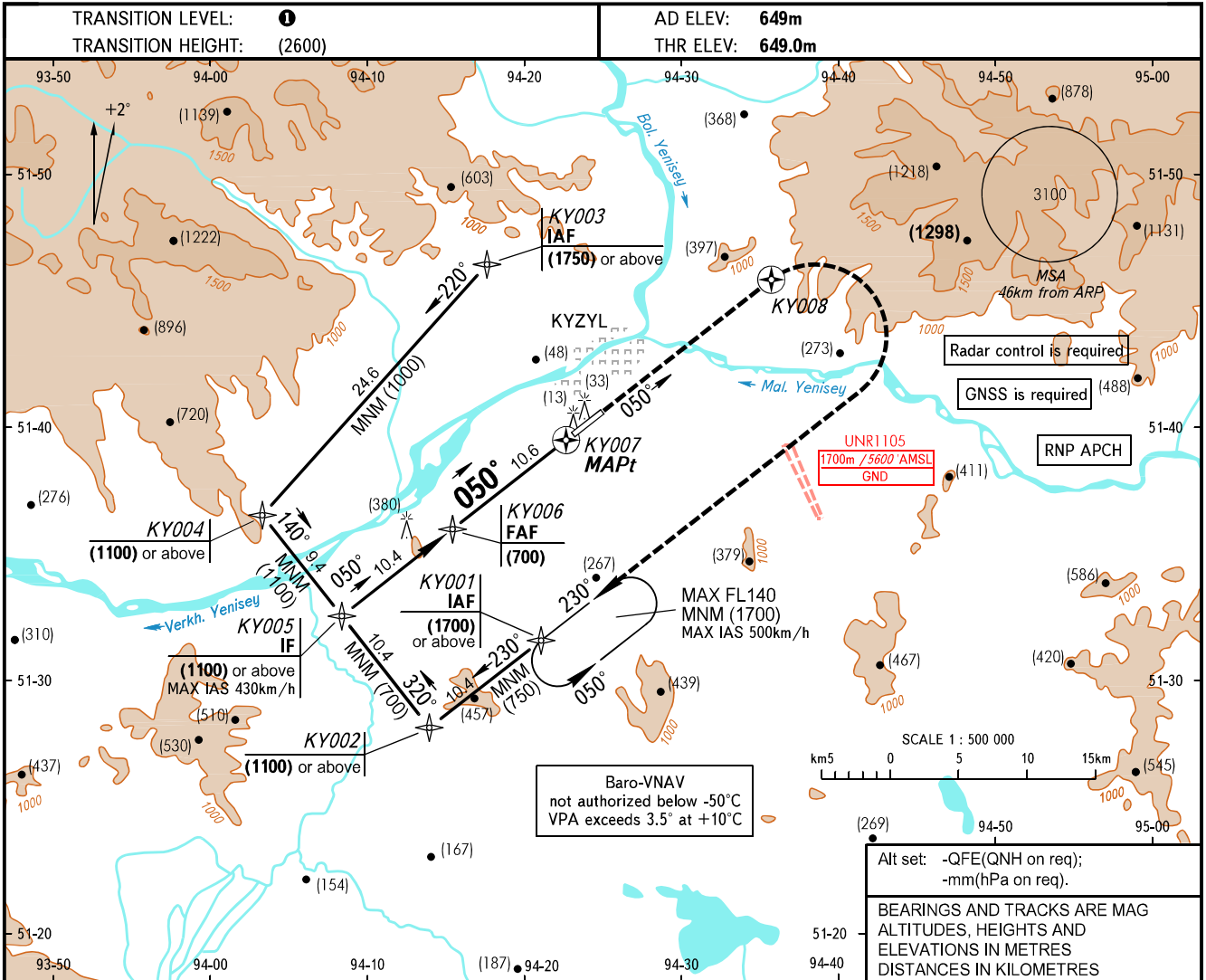


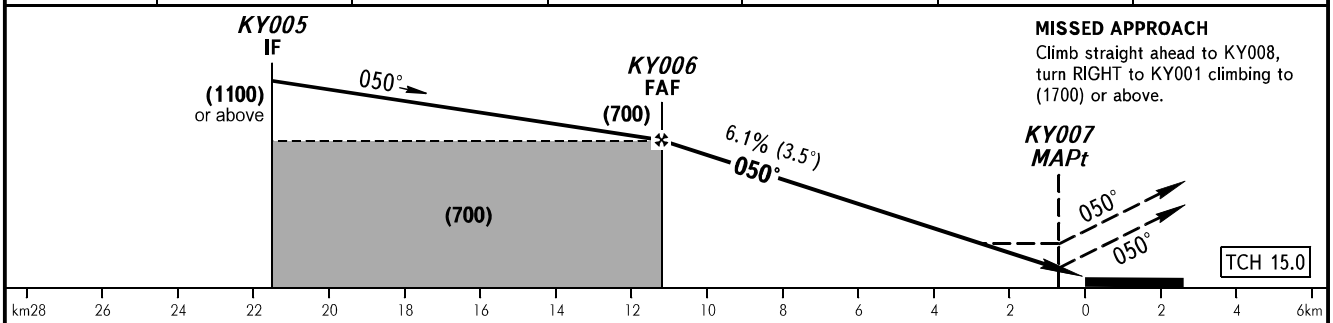
**INSTRUMENT
APPROACH
CHART - ICAO**

TOWER **120.700**

KYZYL, RUSSIA
KYZYL
RNP RWY 05



DIST to KY007	11.2	10.0	8.0	6.0	4.0	2.0
HEIGHT	(700)	(665)	(545)	(420)	(300)	(175)



OCA(H)		A	B	C	D	
Straight-in Approach	LNAV/VNAV	2.5%*	1070 (420)	1085 (435)	1160 (510)	1175 (525)
		4.8%*	705 (55)	705 (60)	710 (65)	735 (90)
	LNAV	2.5%*	1170 (520)	1205 (555)	1270 (625)	1320 (675)
		4.3%*	810 (165)	810 (165)	810 (165)	810 (165)
Circling		1170 (520)	1205 (555)	1270 (625)	1320 (675)	

*MNM climb gradient for missed APCH.

1 TRANSITION LEVEL:
- FL120 when QFE is 701mm mercury column or above;
- FL130 when QFE is 674mm mercury column or above, but less than 701mm mercury column;
- FL140 when QFE is less than 674mm mercury column.

NOTE
Level flight segment is not AVBL on intermediate approach segment.

WARNING
Heavy turbulence with down-draughts may be experienced on final.

GROUND SPEED	km/h	150	180	210	240	270	300	330	360	390
RATE OF DESCENT	m/s	2.5	3.1	3.6	4.1	4.6	5.1	5.6	6.1	6.6

CHANGE: New chart