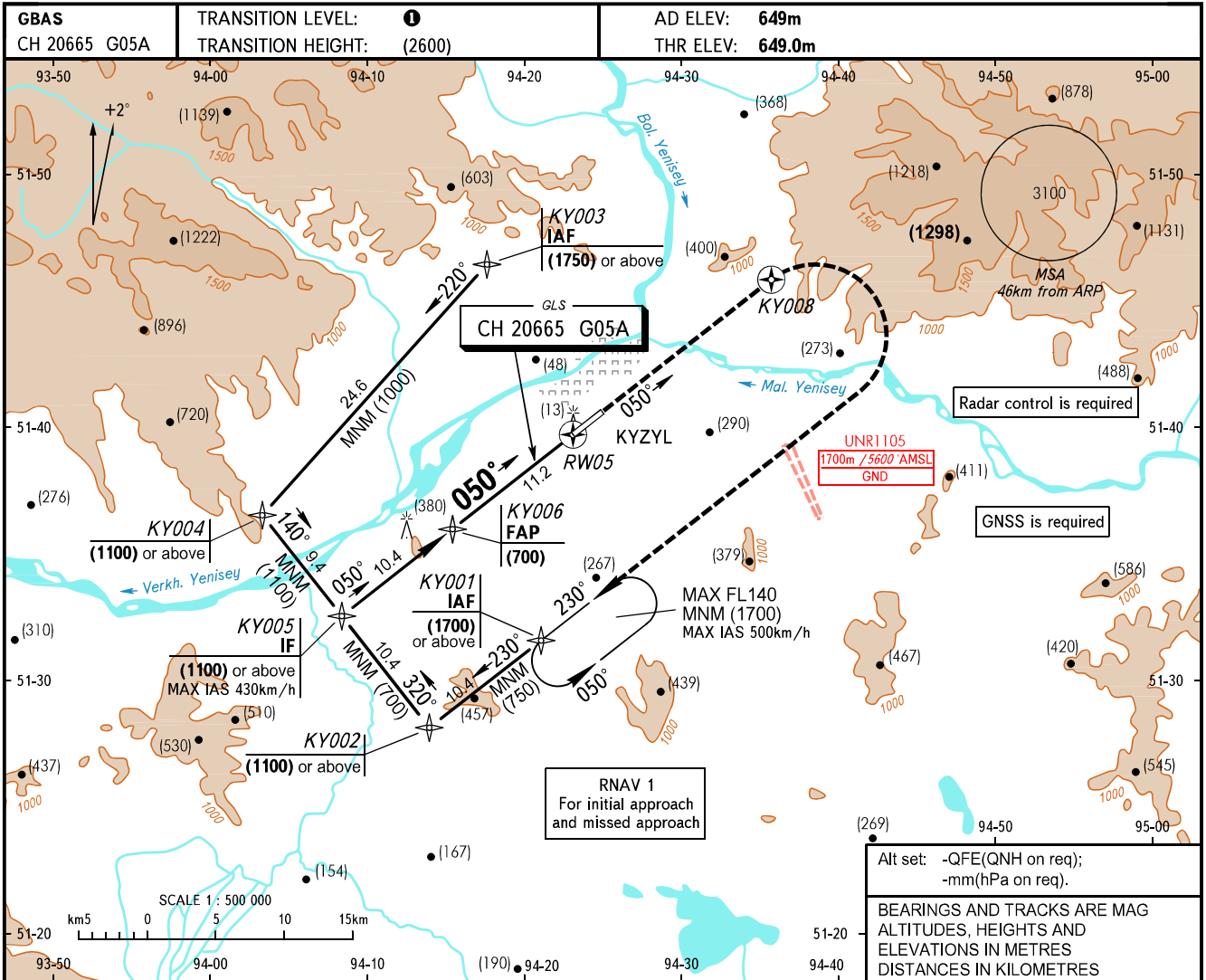


**INSTRUMENT
APPROACH
CHART - ICAO**

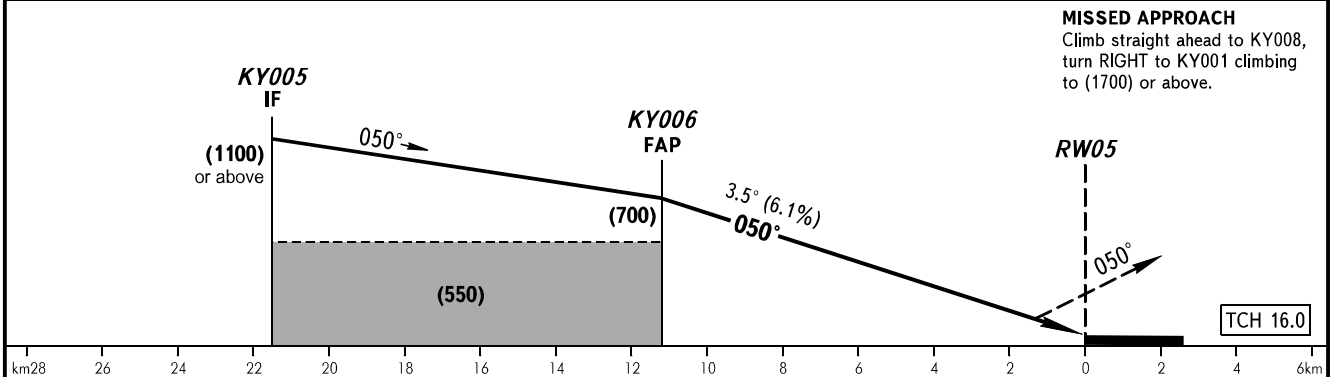
TOWER **120.700**

KYZYL, RUSSIA
KYZYL
GLS RWY 05



Alt set: -QFE(QNH on req);
-mm(hPa on req).

BEARINGS AND TRACKS ARE MAG
ALTITUDES, HEIGHTS AND
ELEVATIONS IN METRES
DISTANCES IN KILOMETRES



OCA(H)		A	B	C	D
Straight-in Approach	CAT I	2.5%* 1065 (419)	1097 (451)	1151 (505)	1163 (517)
		5.0%* 701 (55)	705 (59)	709 (63)	712 (66)
Circling		1065 (419)	1097 (451)	1151 (505)	1163 (517)

*MNM climb gradient for missed APCH.

1 TRANSITION LEVEL:
- FL120 when QFE is 701mm mercury column or above;
- FL130 when QFE is 674mm mercury column or above,
but less than 701mm mercury column;
- FL140 when QFE is less than 674mm mercury column.

NOTE
Level flight segment is not AVBL on intermediate approach segment.

WARNING
Heavy turbulence with down-draughts may be experienced on final.

GROUND SPEED	km/h	150	180	210	240	270	300	330	360	390
RATE OF DESCENT	m/s	2.5	3.1	3.6	4.1	4.6	5.1	5.6	6.1	6.6

CHANGE: New chart