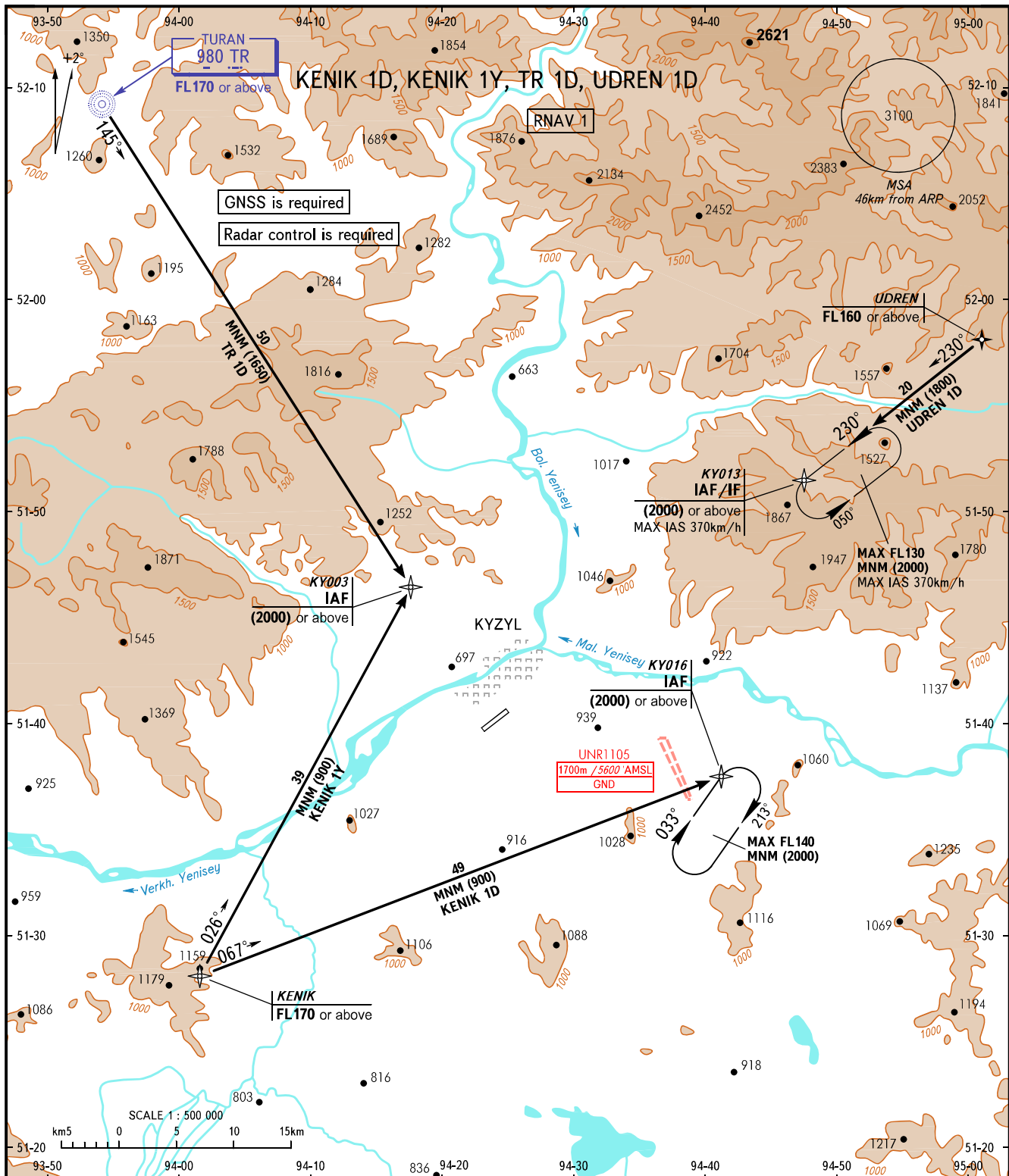


STANDARD ARRIVAL CHART  
INSTRUMENT (STAR) - ICAO

KYZYL, RUSSIA  
KYZYL  
RNAV RWY 23

TRANSITION  
LEVEL : **1**



TOWER 120.700

- 1** TRANSITION LEVEL:
- FL120 when QFE is 701mm mercury column or above;
  - FL130 when QFE is 674mm mercury column or above, but less than 701mm mercury column;
  - FL140 when QFE is less than 674mm mercury column.

BEARINGS AND TRACKS ARE MAGNETIC  
ALTITUDES, HEIGHTS AND ELEVATIONS IN METRES  
DISTANCES IN KILOMETRES

Alt set: -QFE(QNH on req);  
-mm(hPa on req).