

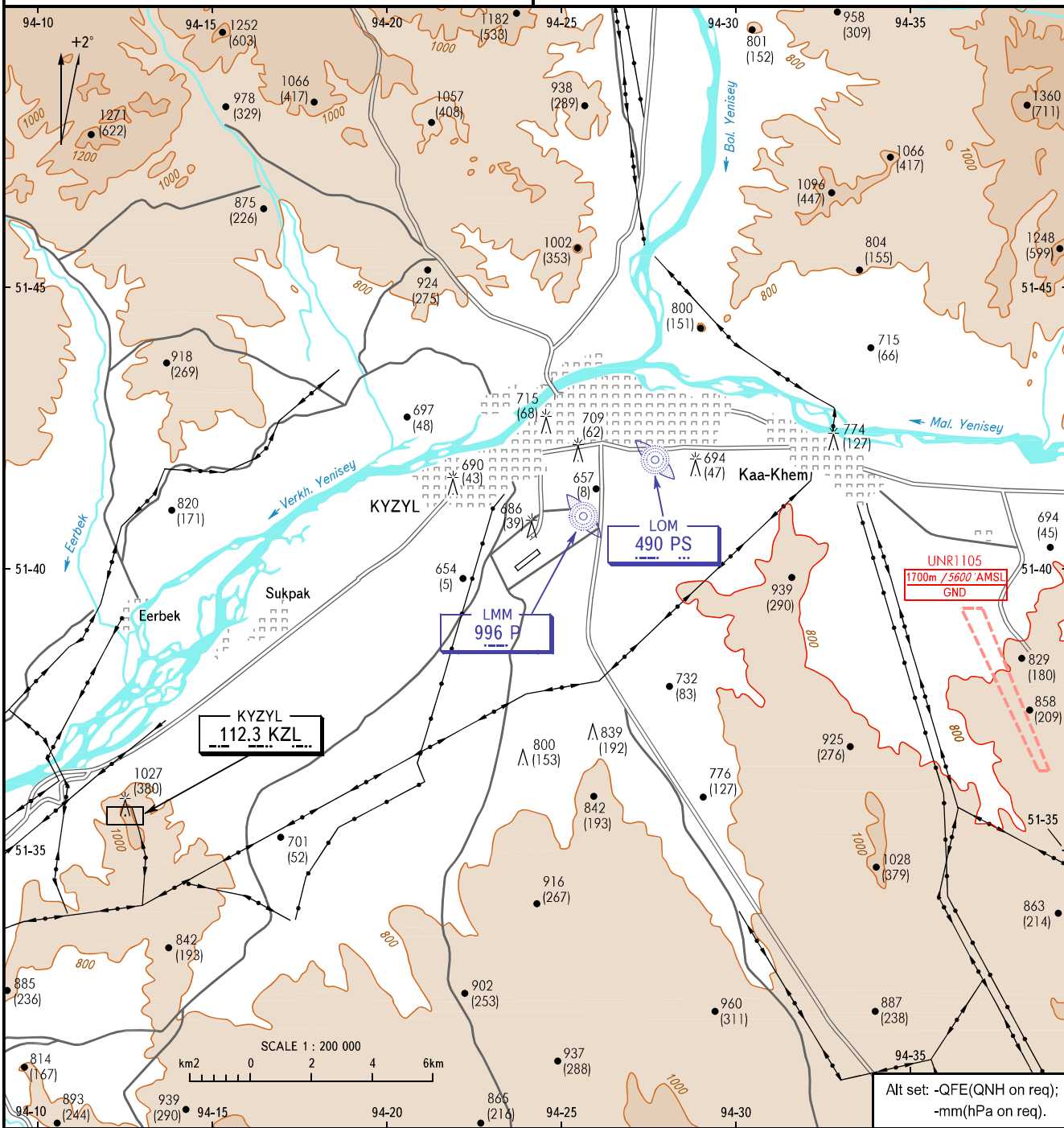
VISUAL
APPROACH
CHART - ICAO

TOWER 120.700

KYZYL, RUSSIA
KYZYL
RWY 05/23

TRANSITION LEVEL: 1

AD ELEV: 649m



Alt set: -QFE(QNH on req);
-mm(hPa on req).

- 1 TRANSITION LEVEL:
- FL120 when QFE is 701mm mercury column or above;
 - FL130 when QFE is 674mm mercury column or above, but less than 701mm mercury column;
 - FL140 when QFE is less than 674mm mercury column.

ALTITUDES, HEIGHTS AND ELEVATIONS IN METRES

CHANGE: New chart