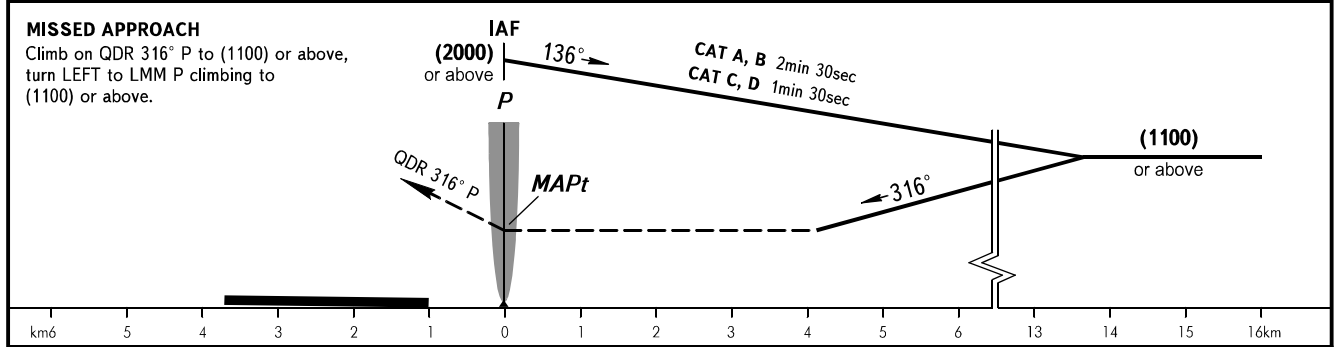
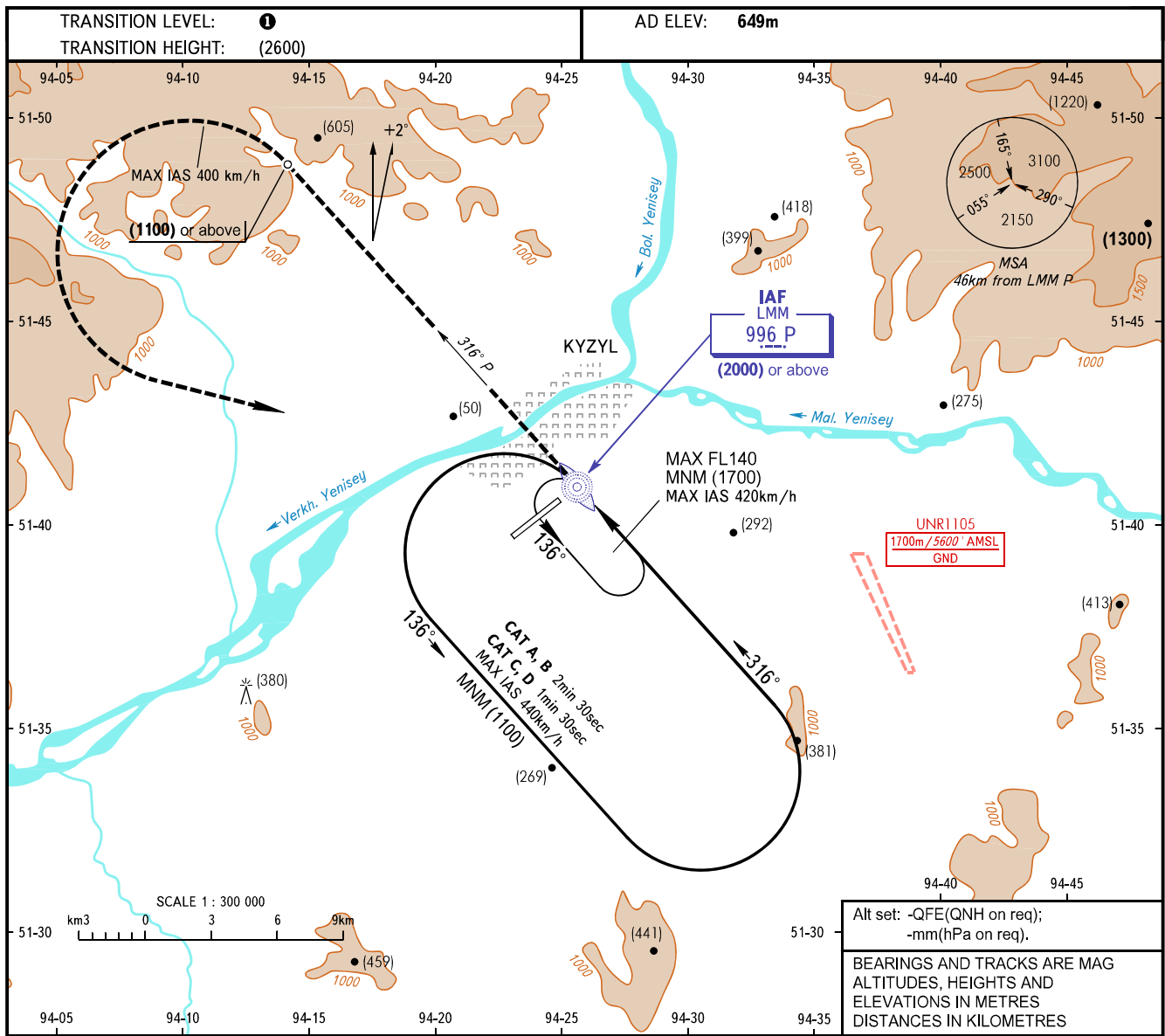


INSTRUMENT  
APPROACH  
CHART - ICAO

TOWER 120.700

KYZYL, RUSSIA  
KYZYL  
NDB B



OCA(H)		A	B	C	D
Straight-in Approach					
Circling		1290 (645)	1290 (645)	1290 (645)	1290 (645)

**① TRANSITION LEVEL:**  
 - FL120 when QFE is 701mm mercury column or above;  
 - FL130 when QFE is 674mm mercury column or above, but less than 701mm mercury column;  
 - FL140 when QFE is less than 674mm mercury column.  
**NOTE:**  
 1. When UNR1105 is active, the chart is used by arrangement with ATS unit.  
 2. Turn before passing MAPt is PROHIBITED.  
**WARNING**  
 Heavy turbulence with down-draughts may be expected on final.