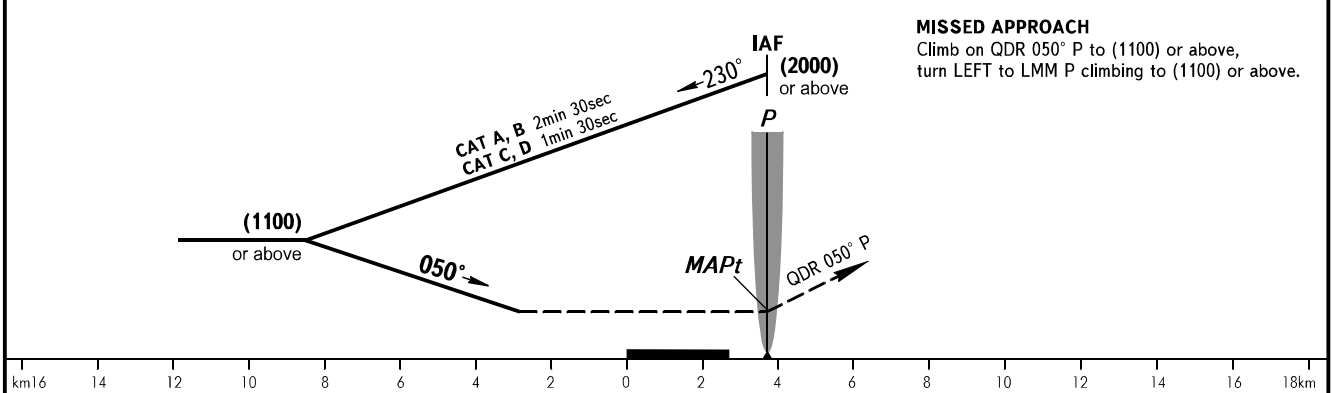
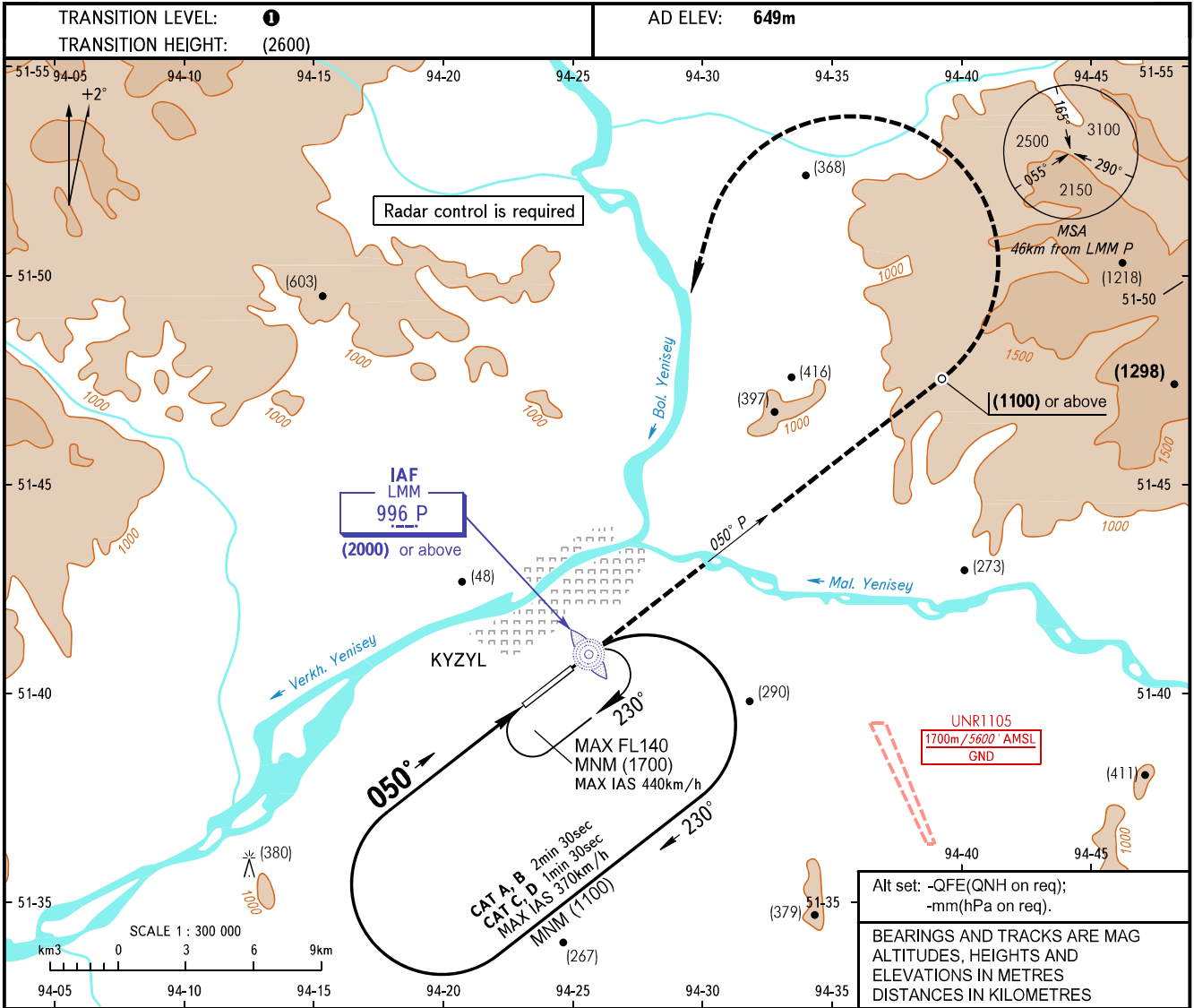


**INSTRUMENT  
APPROACH  
CHART - ICAO**

**KYZYL, RUSSIA**  
KYZYL  
NDB A

TOWER **120.700**



OCA(H)		A	B	C	D
Straight-in Approach					
Circling		1310 (665)	1310 (665)	1310 (665)	1310 (665)

**① TRANSITION LEVEL:**  
 - FL120 when QFE is 701mm mercury column or above;  
 - FL130 when QFE is 674mm mercury column or above, but less than 701mm mercury column;  
 - FL140 when QFE is less than 674mm mercury column.

**NOTE:**  
 1. When UNR1105 is active, the chart is used by arrangement with ATS unit.  
 2. Turn before passing MAPt is PROHIBITED.

**WARNING**  
 Heavy turbulence with down-draughts may be expected on final.

CHANGE: New chart