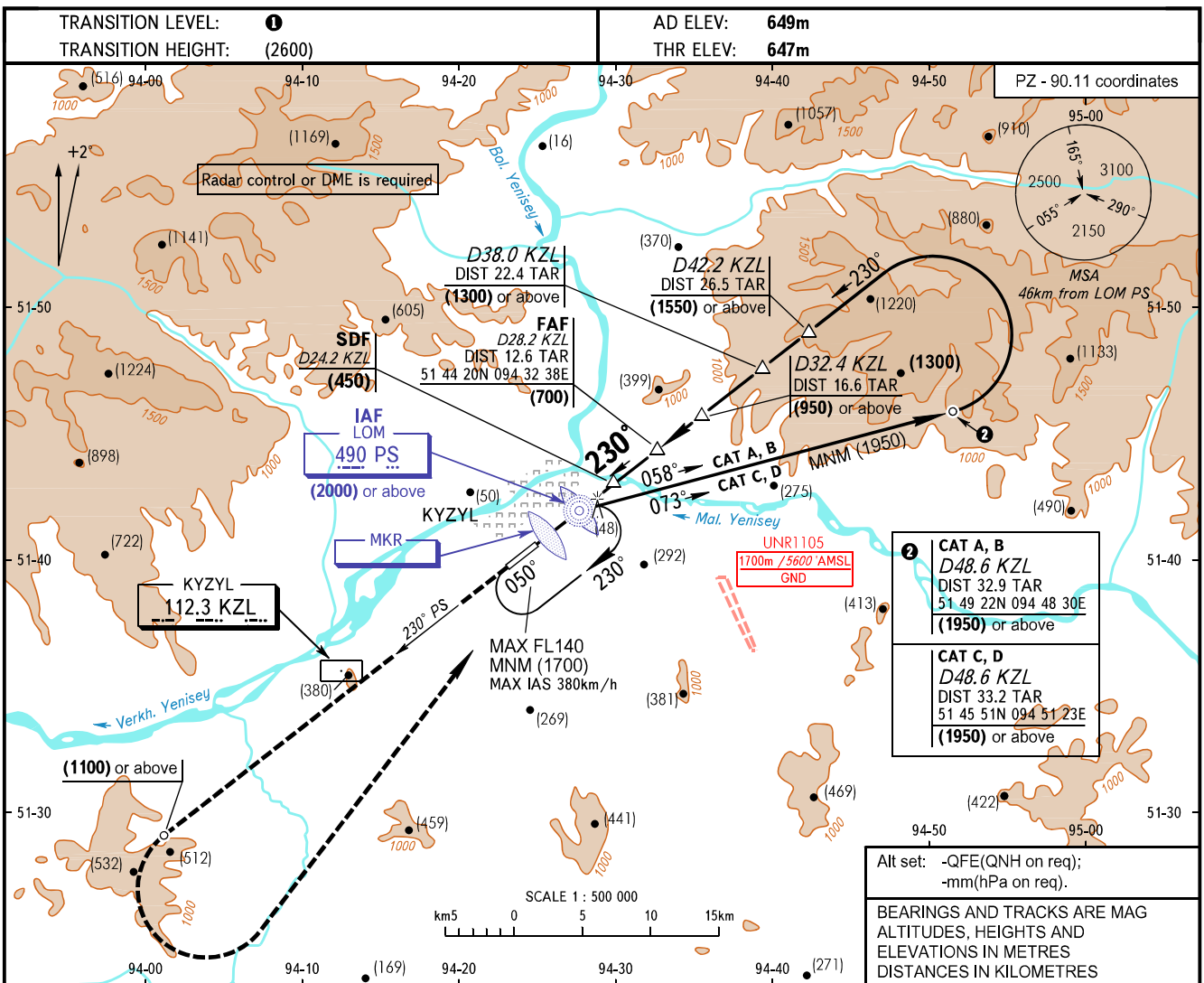


**INSTRUMENT
APPROACH
CHART - ICAO**

TOWER **120.700**

KYZYL, RUSSIA
KYZYL
NDB Y RWY 23



MISSED APPROACH Climb on QDR 230° PS to (1100) or above, turn LEFT to LOM PS climbing to (2000) or above, then join the holding area.		IAF CAT A, B 058° CAT C, D 073°		FAF is fixed by TAR (DIST 12.6)		D48.6 KZL DIST 33.2 TAR CAT C, D			
DME KZL		MKR		SDF D24.2 KZL (450)		FAF D28.2 KZL (700)		D38.0 KZL DIST 22.4 TAR (1300) or above	
MAPt		PS		6.1% (3.5°)		D42.2 KZL DIST 26.5 TAR (1550) or above		D32.4 KZL DIST 16.6 TAR (950) or above	
QDR 230° PS								D48.6 KZL DIST 32.9 TAR (1950) or above	
km15 12 3 0 3 6 9 12 15 18 21 24 27 30 33 36 39km									
OCA(H)		A		B		C		D	
Straight-in Approach	WO SDF	1080 (435)		1080 (435)		1080 (435)		1080 (435)	
	With SDF	845 (200)		845 (200)		845 (200)		845 (200)	
Circling		1080 (435)		1080 (435)		1170 (525)		1250 (600)	
Timing not authorized for defining MAPt.									
① TRANSITION LEVEL: - FL120 when OFE is 701mm mercury column or above; - FL130 when QFE is 674mm mercury column or above, but less than 701mm mercury column; - FL140 when QFE is less than 674mm mercury column.									
NOTE: 1. Turn before passing MAPt is PROHIBITED. 2. Level flight segment is not AVBL on intermediate approach segment.									
WARNING Heavy turbulence with down-draughts may be experienced on final.									
GROUND SPEED	km/h	150		180		210		240	
FAF - MAPt 10.2km	min:sec	4:05		3:24		2:55		2:33	
RATE OF DESCENT	m/s	2.5		3.1		3.6		4.1	

CHANGE: New chart