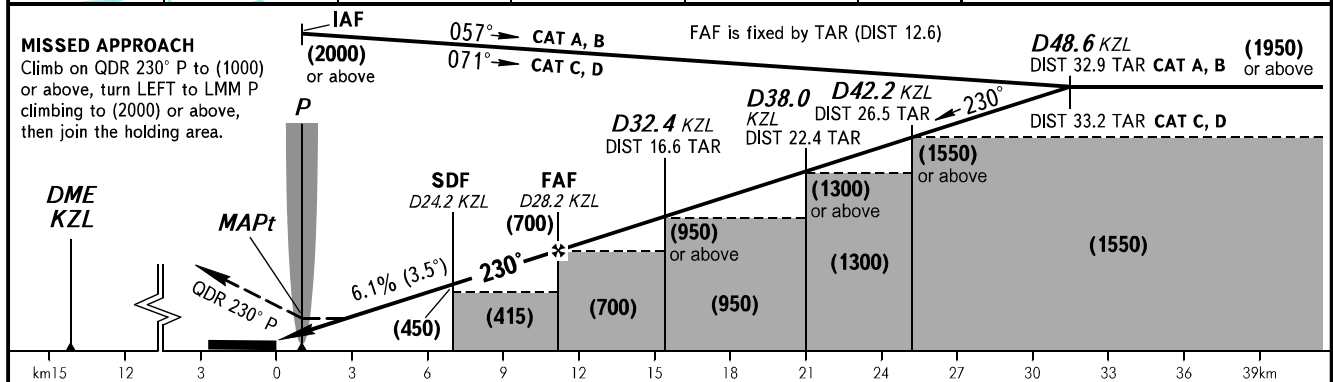
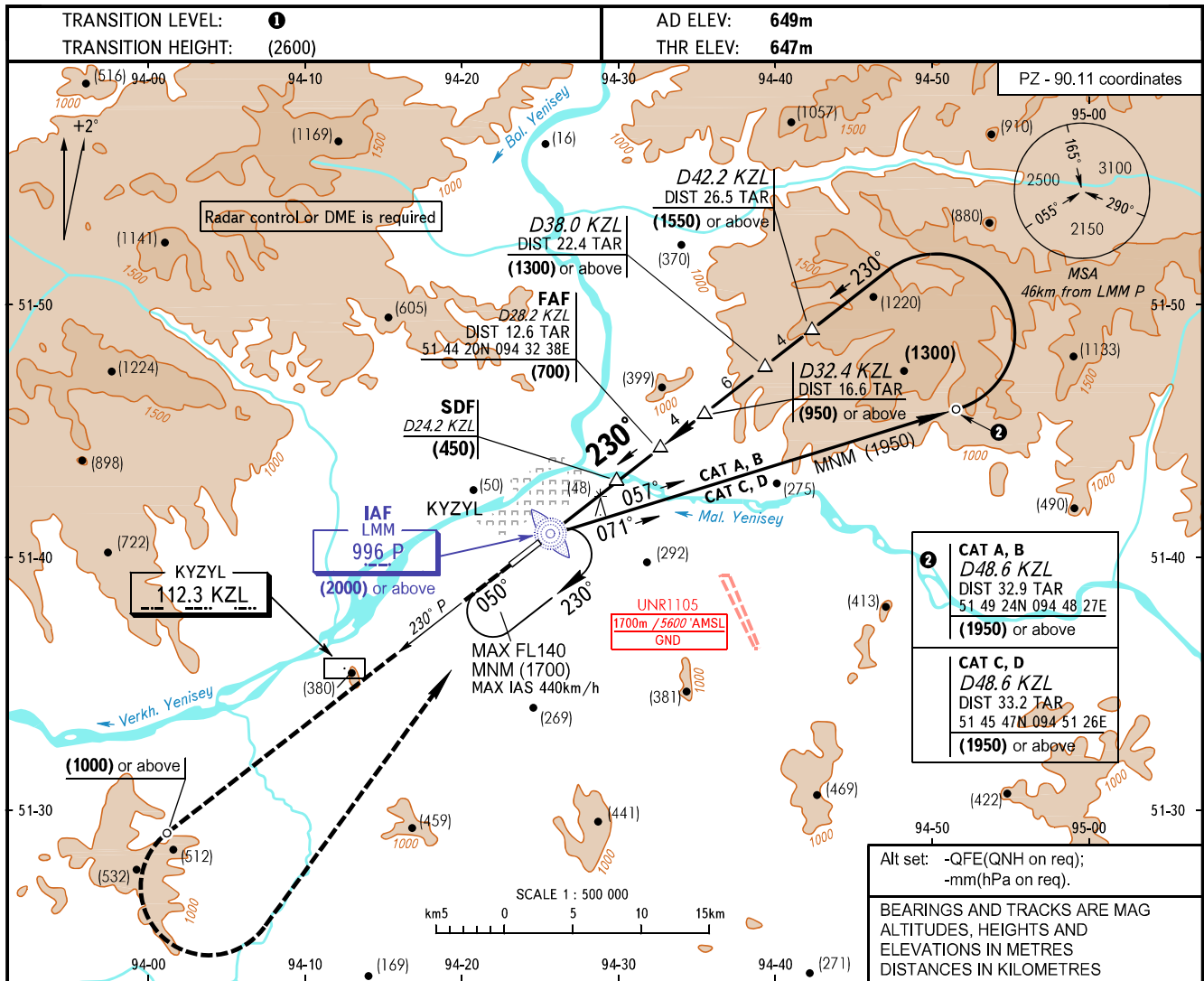


INSTRUMENT  
APPROACH  
CHART - ICAO

TOWER 120.700

KYZYL, RUSSIA  
KYZYL  
NDB Z RWY 23



OCA(H)		A	B	C	D					
Straight-in Approach	With SDF	845 (200)	845 (200)	845 (200)	845 (200)					
	WO SDF	1060 (415)	1060 (415)	1060 (415)	1060 (415)					
Circling		1060 (415)	1060 (415)	1170 (525)	1250 (600)					
Timing not authorized for defining MAPt.										
GROUND SPEED	km/h	150	180	210	240	270	300	330	360	390
FAF - MAPt 10.2km	min:sec	4:05	3:24	2:55	2:33	2:16	2:02	1:51	1:42	1:34
RATE OF DESCENT	m/s	2.5	3.1	3.6	4.1	4.6	5.1	5.6	6.1	6.6

**TRANSITION LEVEL:**  
- FL120 when QFE is 701mm mercury column or above;  
- FL130 when QFE is 674mm mercury column or above, but less than 701mm mercury column;  
- FL140 when QFE is less than 674mm mercury column.

**NOTE:**  
1. Turn before passing MAPt is PROHIBITED.  
2. Level flight segment is not AVBL on intermediate approach segment.

**WARNING**  
Heavy turbulence with down-draughts may be experienced on final.