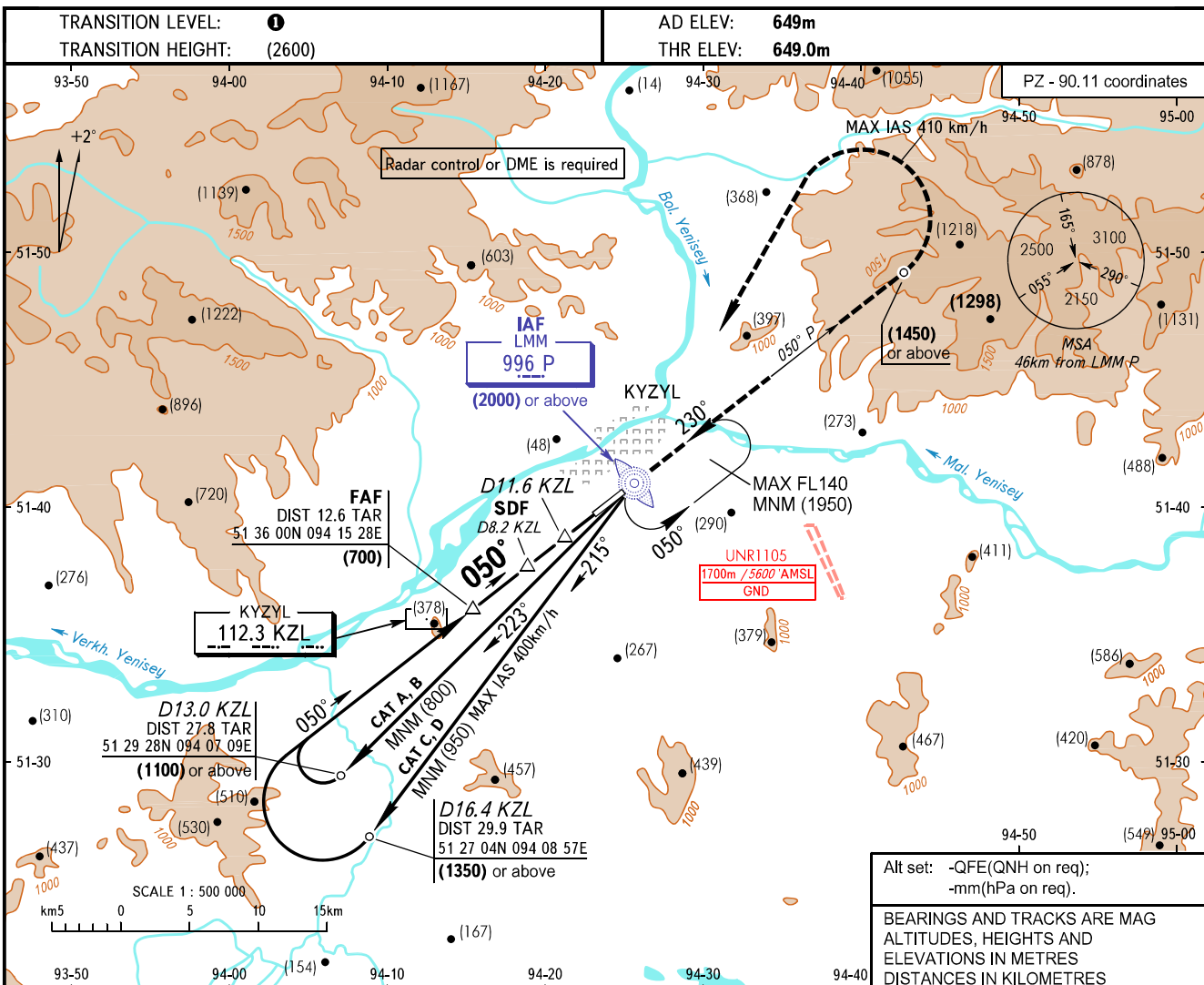


**INSTRUMENT
APPROACH
CHART - ICAO**

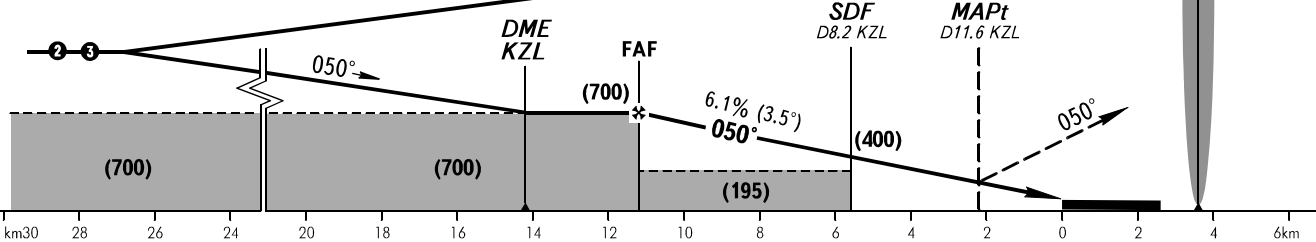
TOWER 120.700

KYZYL, RUSSIA
KYZYL
NDB Z RWY 05



- ② CAT A, B (1100) or above
D13.0 KZL
DIST 27.8 TAR
- ③ CAT C, D (1350) or above
D16.4 KZL
DIST 29.9 TAR

MISSED APPROACH
Climb straight ahead to LMM P, then proceed on QDR 050° P to (1450) or above, turn LEFT to LMM P climbing to (2000) or above, then proceed to holding area.
FAF is fixed by TAR (DIST 12.6)



OCA(H)		A	B	C	D	
Straight-in Approach	With SDF	4.0%*	825 (180)	825 (180)	825 (180)	825 (180)
	WO SDF	2.5%*	1260 (615)	1260 (615)	1260 (615)	1260 (615)
	WO SDF	4.0%*	840 (195)	840 (195)	840 (195)	840 (195)
Circling			1260 (615)	1260 (615)	1260 (615)	1260 (615)

*MNM climb gradient for missed APCH.

① TRANSITION LEVEL:
- FL120 when QFE is 701mm mercury column or above;
- FL130 when QFE is 674mm mercury column or above, but less than 701mm mercury column;
- FL140 when QFE is less than 674mm mercury column.

NOTE
Turn before passing LMM P is PROHIBITED.

WARNING
Heavy turbulence with down-draughts may be experienced on final.

GROUND SPEED	km/h	150	180	210	240	270	300	330	360	390
FAF - MAPt 8.6km	min:sec	3:24	2:50	2:26	2:08	1:53	1:42	1:33	1:25	1:18
RATE OF DESCENT	m/s	2.5	3.1	3.6	4.1	4.6	5.1	5.6	6.1	6.6

CHANGE: New chart