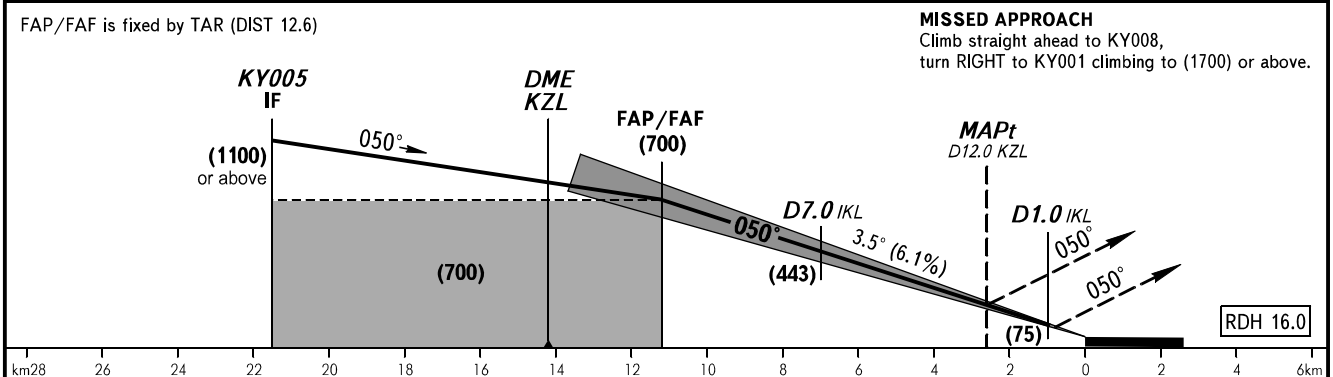
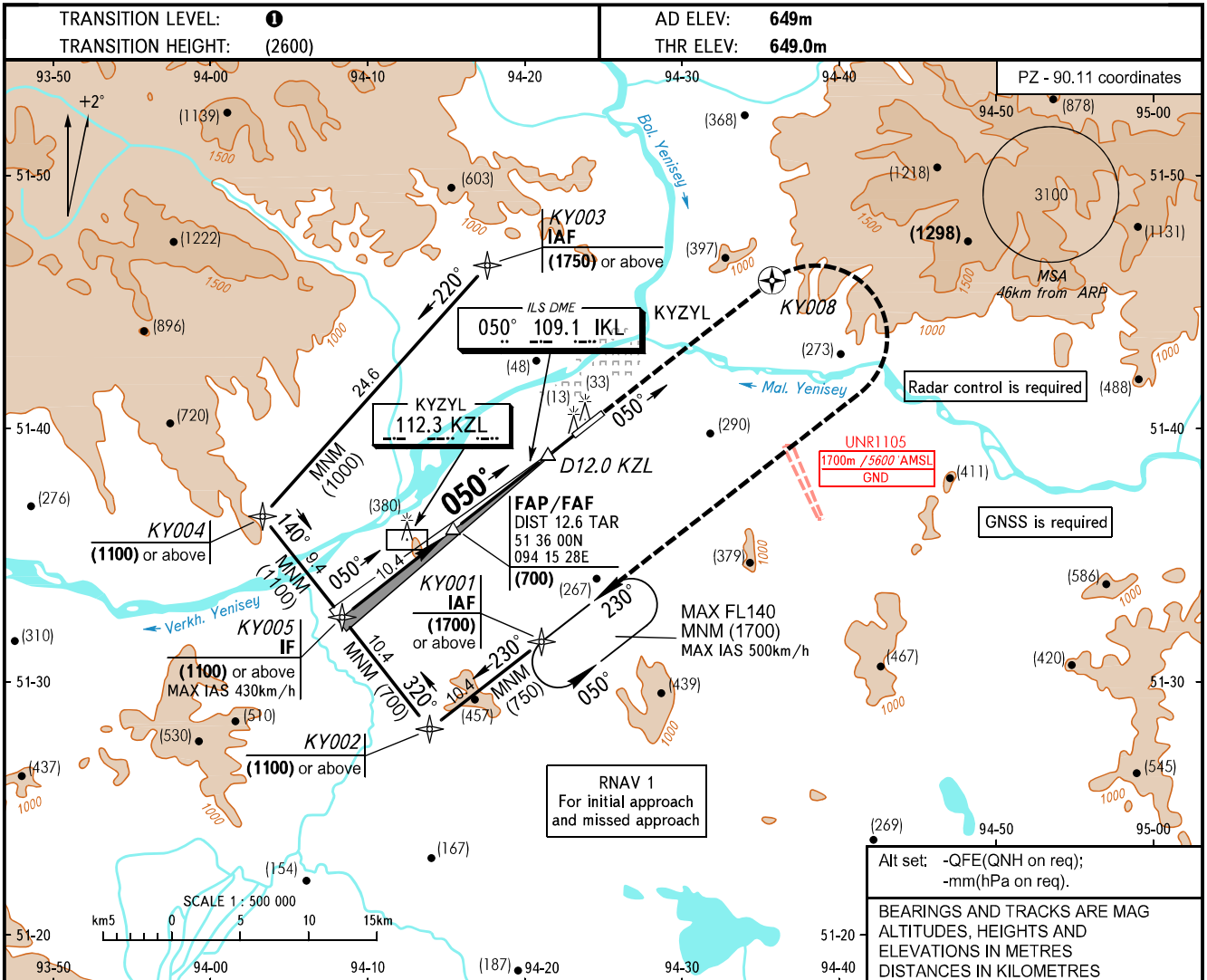


**INSTRUMENT
APPROACH
CHART - ICAO**

TOWER **120.700**

KYZYL, RUSSIA
KYZYL
ILS Z, LOC Z RWY 05



FAP/FAF is fixed by TAR (DIST 12.6)

OCA(H)		A	B	C	D	
Straight-in Approach	CAT I	2.5%*	1065 (419)	1097 (451)	1151 (505)	1163 (517)
		5.0%*	701 (55)	705 (59)	709 (63)	712 (66)
	LOC	2.5%*	1215 (565)	1245 (600)	1315 (670)	1345 (700)
		5.0%*	810 (165)	810 (165)	810 (165)	810 (165)
Circling		1215 (565)	1245 (600)	1315 (670)	1345 (700)	

*MNM climb gradient for missed APCH.

1 TRANSITION LEVEL:
- FL120 when OFE is 701mm mercury column or above;
- FL130 when QFE is 674mm mercury column or above, but less than 701mm mercury column;
- FL140 when QFE is less than 674mm mercury column.

NOTE:
1. Level flight segment is not AVBL on intermediate approach segment.
2. ILS DME IKL reads zero at RWY 05 THR.

WARNING
Heavy turbulence with down-draughts may be experienced on final.

GROUND SPEED	km/h	150	180	210	240	270	300	330	360	390
FAF - MAPt 8.8km	min:sec	3:32	2:57	2:31	2:12	1:58	1:46	1:36	1:28	1:22
RATE OF DESCENT	m/s	2.5	3.1	3.6	4.1	4.6	5.1	5.6	6.1	6.6

CHANGE: New chart