

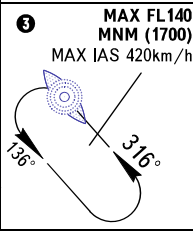
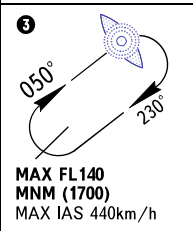
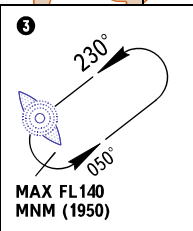
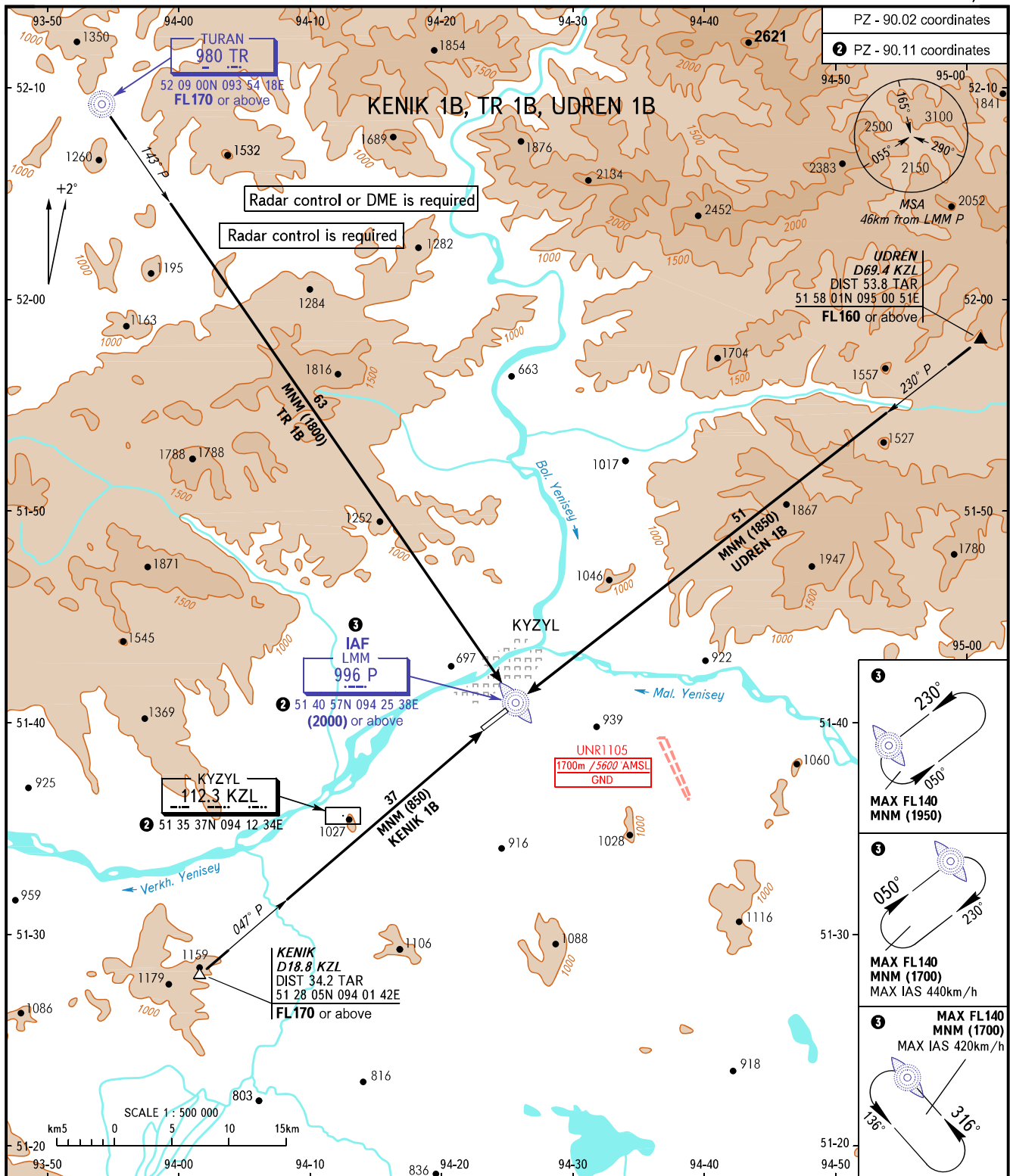
STANDARD ARRIVAL CHART
INSTRUMENT (STAR) - ICAO

KYZYL, RUSSIA

KYZYL

RWY 05/23

TRANSITION
LEVEL : ①



TOWER 120.700

① TRANSITION LEVEL:

- FL120 when QFE is 701mm mercury column or above;
- FL130 when QFE is 674mm mercury column or above, but less than 701mm mercury column;
- FL140 when QFE is less than 674mm mercury column.

BEARINGS AND TRACKS ARE MAGNETIC
ALTITUDES, HEIGHTS AND ELEVATIONS IN METRES
DISTANCES IN KILOMETRES

Alt set: -QFE(QNH on req);
-mm(hPa on req).