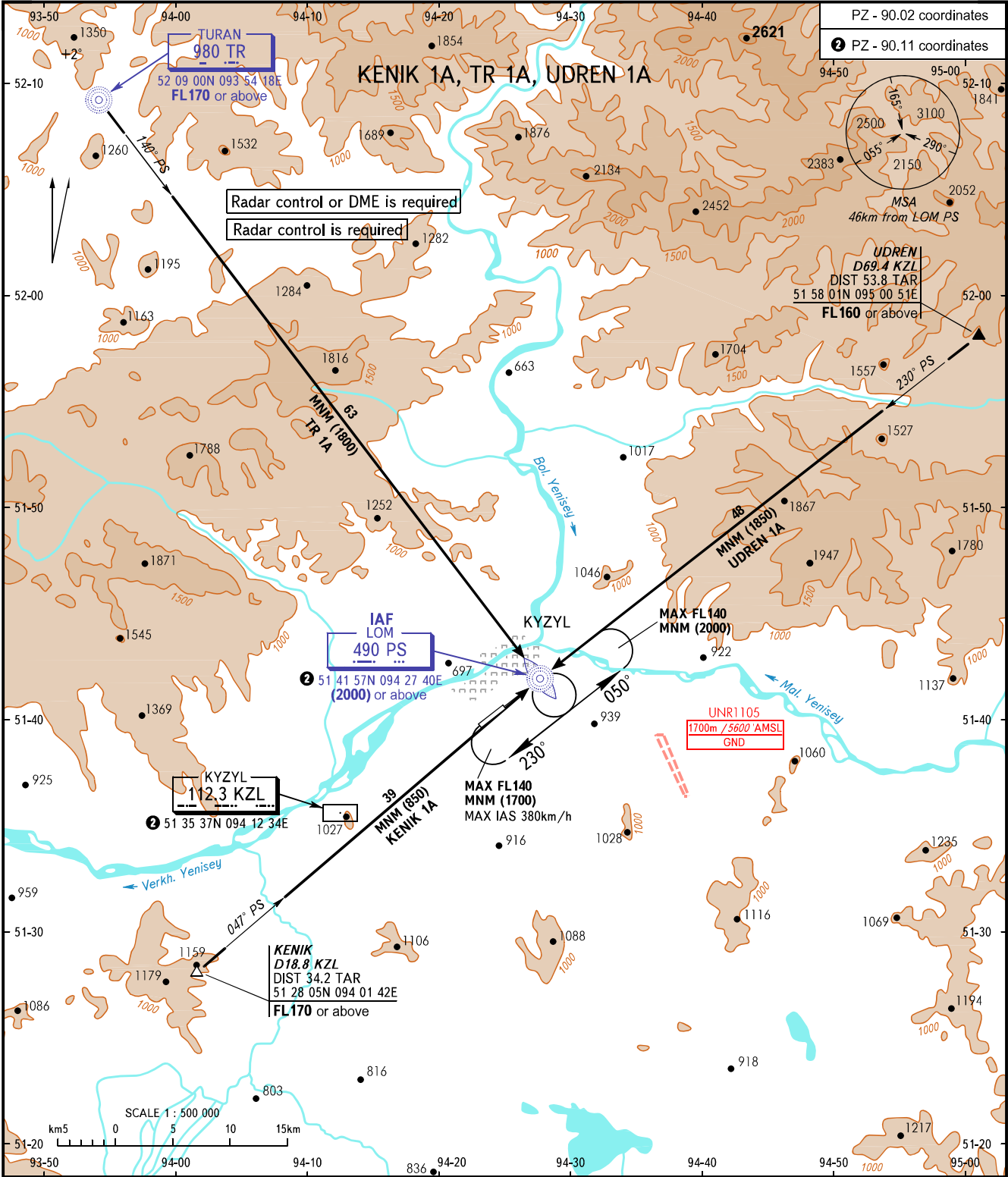


STANDARD ARRIVAL CHART
INSTRUMENT (STAR) - ICAO

KYZYL, RUSSIA
KYZYL
RWY 05/23

TRANSITION
LEVEL : **1**



TOWER **120.700**

1 TRANSITION LEVEL:
 - FL120 when QFE is 701mm mercury column or above;
 - FL130 when QFE is 674mm mercury column or above,
 but less than 701mm mercury column;
 - FL140 when QFE is less than 674mm mercury column.

BEARINGS AND TRACKS ARE MAGNETIC
 ALTITUDES, HEIGHTS AND ELEVATIONS IN METRES
 DISTANCES IN KILOMETRES

Alt set: -QFE(QNH on req);
 -mm(hPa on req).

CHANGE: New chart