

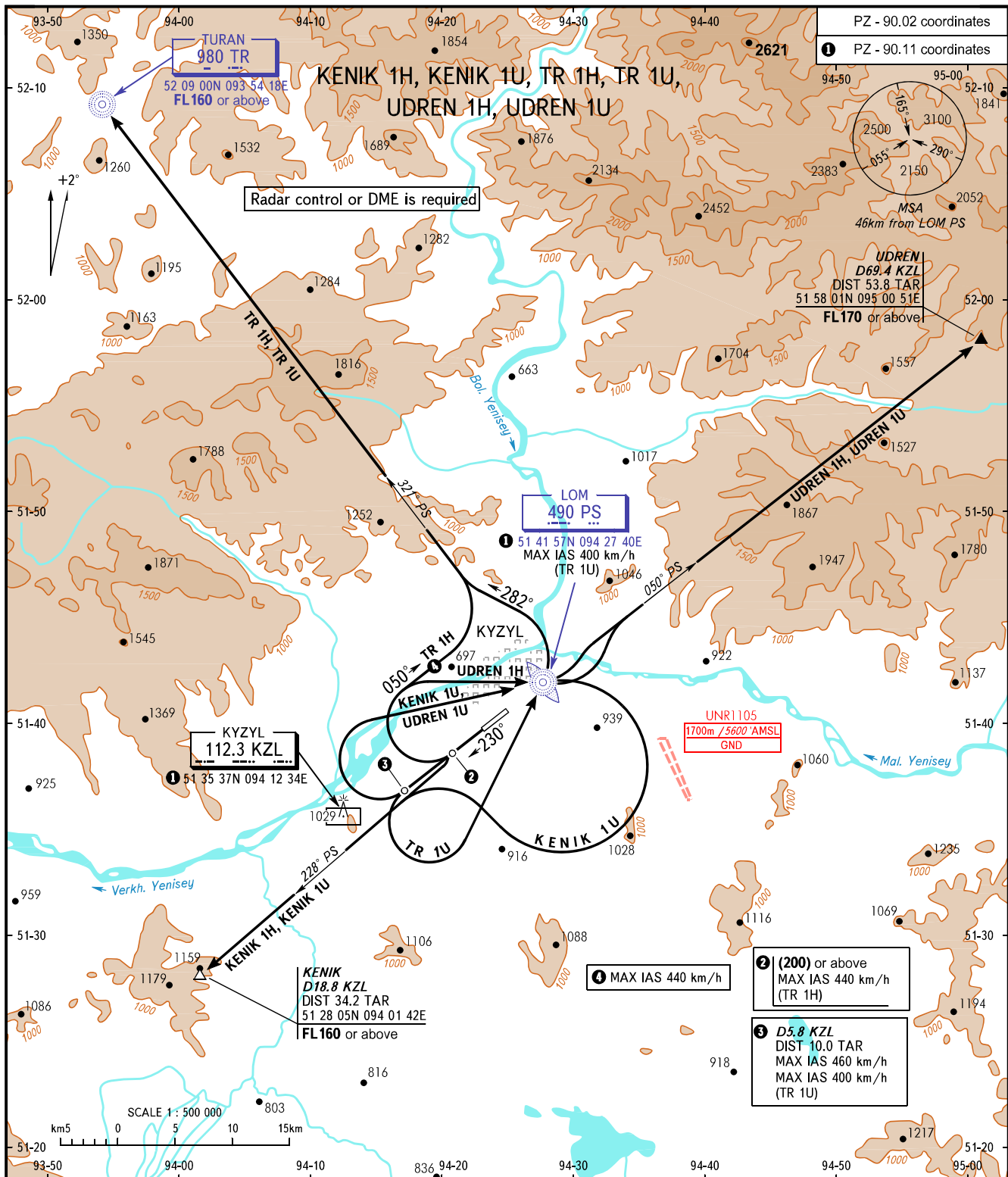
STANDARD DEPARTURE CHART
INSTRUMENT (SID) - ICAO

TRANSITION
HEIGHT: (2600)

KYZYL, RUSSIA

KYZYL

RWY 23



TOWER 120.700

WARNING:

- MNM climb gradients required due to obstacles:
 - 3.7% up to (850) for SID KENIK 1H;
 - 4.7% up to (1300) for SID KENIK 1U;
 - 4.7% up to (1650) for SID TR 1H;
 - 5.4% up to (1800) for SID UDREN 1H;
 - 4.7% up to (1300) for SID UDREN 1U.
- MNM climb gradients required due to the airspace structure:
 - 13.0% up to FL160 for SID KENIK 1H;
 - 4.8% up to FL130 for SID KENIK 1U;
 - 5.4% up to FL160 for SID TR 1H;
 - 4.1% up to FL160 for SID TR 1U;
 - 7.9% up to FL130 for SID UDREN 1H;
 - 5.2% up to FL170 for SID UDREN 1U.

BEARINGS AND TRACKS ARE MAGNETIC
ALTITUDES, HEIGHTS AND ELEVATIONS IN METRES
DISTANCES IN KILOMETRES

Alt set: -QFE(QNH on req);
-mm(hPa on req).