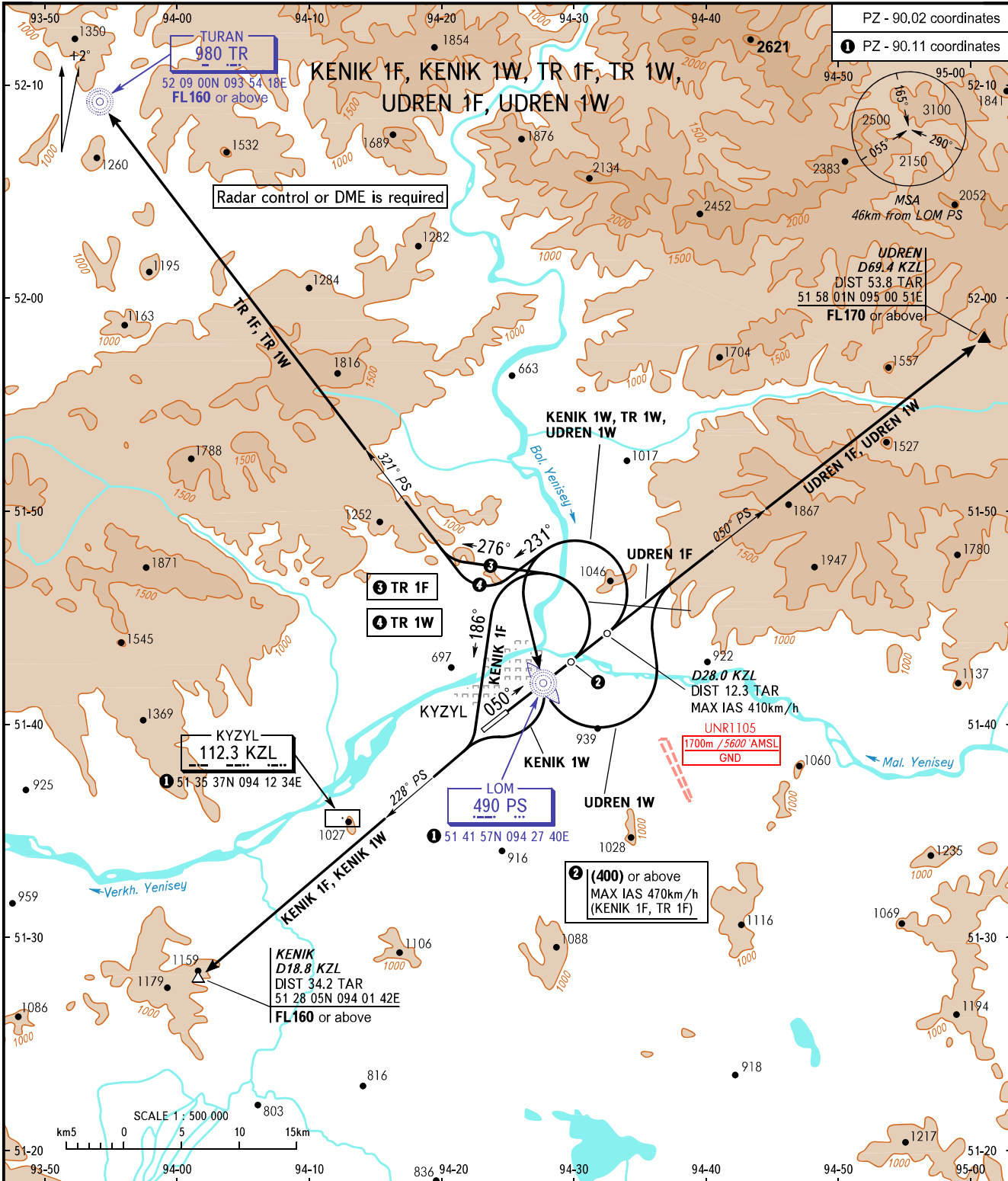


STANDARD DEPARTURE CHART
INSTRUMENT (SID) - ICAO

TRANSITION HEIGHT: (2600)

KYZYL, RUSSIA
KYZYL
RWY 05



WARNING:

- MNM climb gradients required due to obstacles:
 - 4.9% up to (700) for SID KENIK 1F;
 - 5.0% up to (700) for SID KENIK 1W;
 - 4.9% up to (1650) for SID TR 1F;
 - 5.0% up to (1450) for SID TR 1W;
 - 6.0% up to (1600) for SID UDREN 1F;
 - 5.0% up to (1700) for SID UDREN 1W.
- MNM climb gradients required due to the airspace structure:
 - 6.8 % up to FL160 for SID KENIK 1F;
 - 5.6% up to FL160 for SID KENIK 1W;
 - 5.8% up to FL160 for SID TR 1F;
 - 5.1% up to FL160 for SID TR 1W;
 - 8.8% up to FL170 for SID UDREN 1F;
 - 5.6% up to FL150 for SID UDREN 1W.
- Turn before passing LOM PS is PROHIBITED.

BEARINGS AND TRACKS ARE MAGNETIC
ALTITUDES, HEIGHTS AND ELEVATIONS IN METRES
DISTANCES IN KILOMETRES

Alt set: -QFE(QNH on req);
-mm(hPa on req).

CHANGE: New chart