

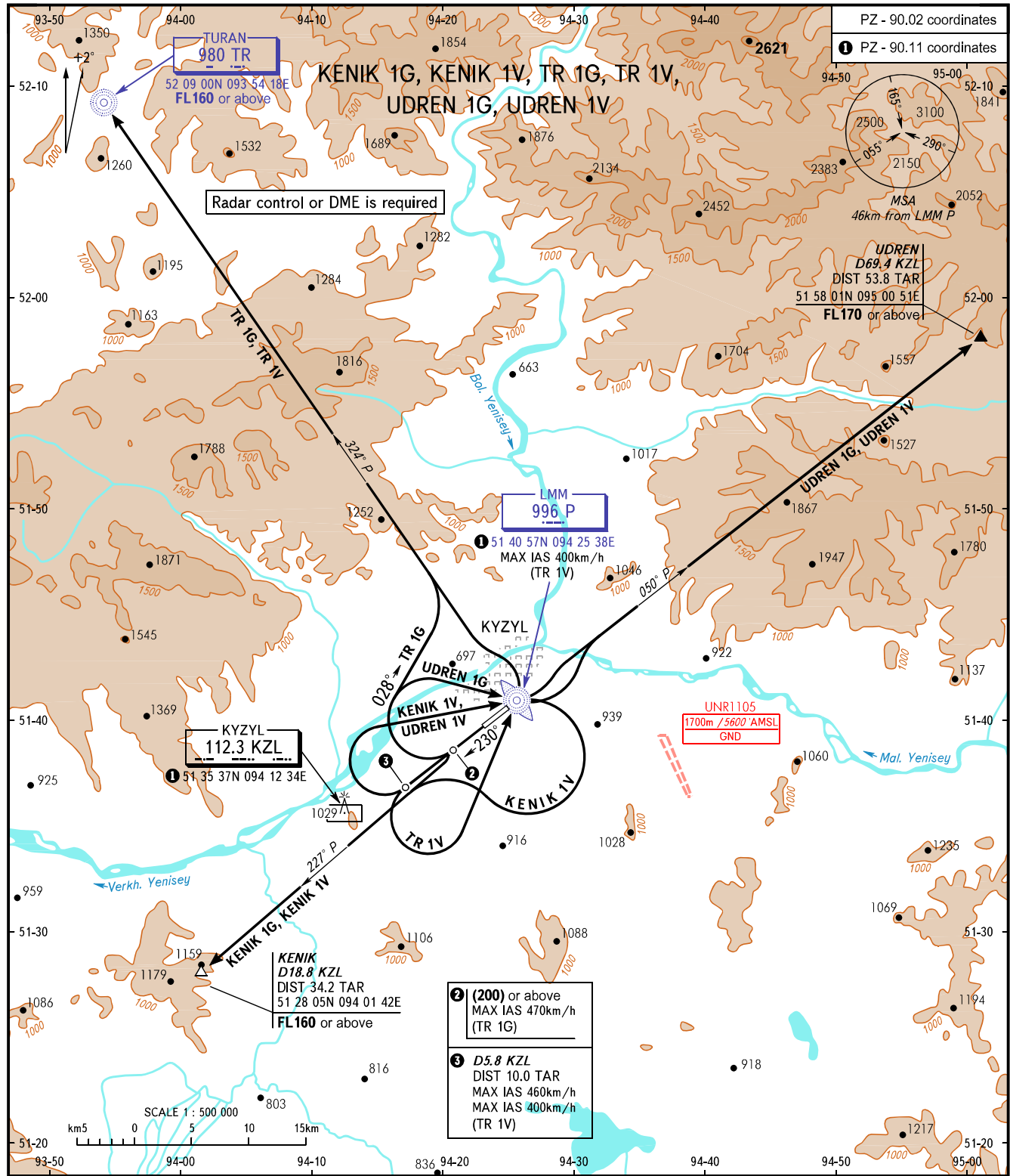
STANDARD DEPARTURE CHART
INSTRUMENT (SID) - ICAO

KYZYL, RUSSIA

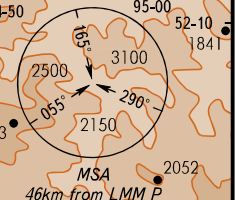
KYZYL

RWY 23

TRANSITION HEIGHT: (2600)



PZ - 90.02 coordinates
 ① PZ - 90.11 coordinates



TOWER 120.700

WARNING:

1. MNM climb gradients required due to obstacles:
 - 3.7 % up to (850) for SID KENIK 1G;
 - 4.7% up to (1300) for SID KENIK 1V;
 - 4.7% up to (1750) for SID TR 1G;
 - 3.5% up to (1200) for SID TR 1V;
 - 5.4% up to (1800) for SID UDREN 1G;
 - 4.7% up to (1300) for SID UDREN 1V.

2. MNM climb gradients required due to the airspace structure:
 - 13.0% up to FL160 for SID KENIK 1G;
 - 4.9% up to FL150 for SID KENIK 1V;
 - 5.7% up to FL160 for SID TR 1G;
 - 4.3% up to FL160 for SID TR 1V;
 - 7.9% up to FL140 for SID UDREN 1G;
 - 5.1% up to FL170 for SID UDREN 1V.

BEARINGS AND TRACKS ARE MAGNETIC
 ALTITUDES, HEIGHTS AND ELEVATIONS IN METRES
 DISTANCES IN KILOMETRES

Alt set: -QFE(QNH on req);
 -mm(hPa on req).