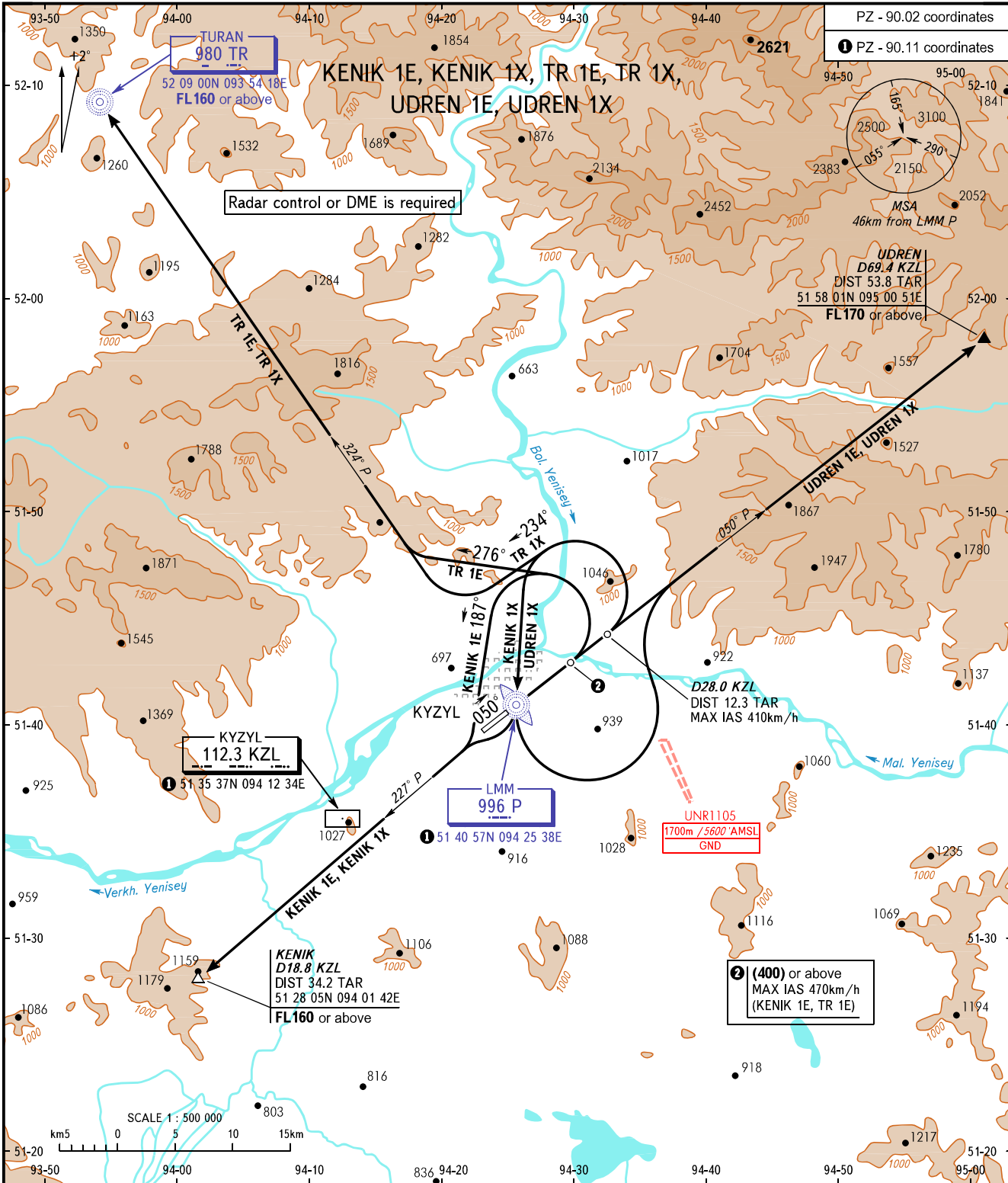


STANDARD DEPARTURE CHART
INSTRUMENT (SID) - ICAO

TRANSITION HEIGHT: (2600)

KYZYL, RUSSIA
KYZYL
RWY 05



TOWER 120.700

WARNING:

1. MNM climb gradients required due to obstacles:
 - 4.9% up to (700) for SID KENIK 1E;
 - 5.0% up to (700) for SID KENIK 1X;
 - 4.9% up to (1650) for SID TR 1E;
 - 5.0% up to (1600) for SID TR 1X;
 - 6.0% up to (1600) for SID UDREN 1E;
 - 5.0% up to (1100) for SID UDREN 1X.
2. MNM climb gradients required due to the airspace structure:
 - 6.8 % up to FL160 for SID KENIK 1E;
 - 5.8 % up to FL160 for SID KENIK 1X, TR 1E;
 - 5.0% up to FL160 for SID TR 1X;
 - 8.8% up to FL170 for SID UDREN 1E;
 - 5.0% up to FL150 for SID UDREN 1X.
3. Turn before passing LMM P is PROHIBITED.

BEARINGS AND TRACKS ARE MAGNETIC
ALTITUDES, HEIGHTS AND ELEVATIONS IN METRES
DISTANCES IN KILOMETRES

Alt set: -QFE(QNH on req);
-mm(hPa on req).

CHANGE: New chart