

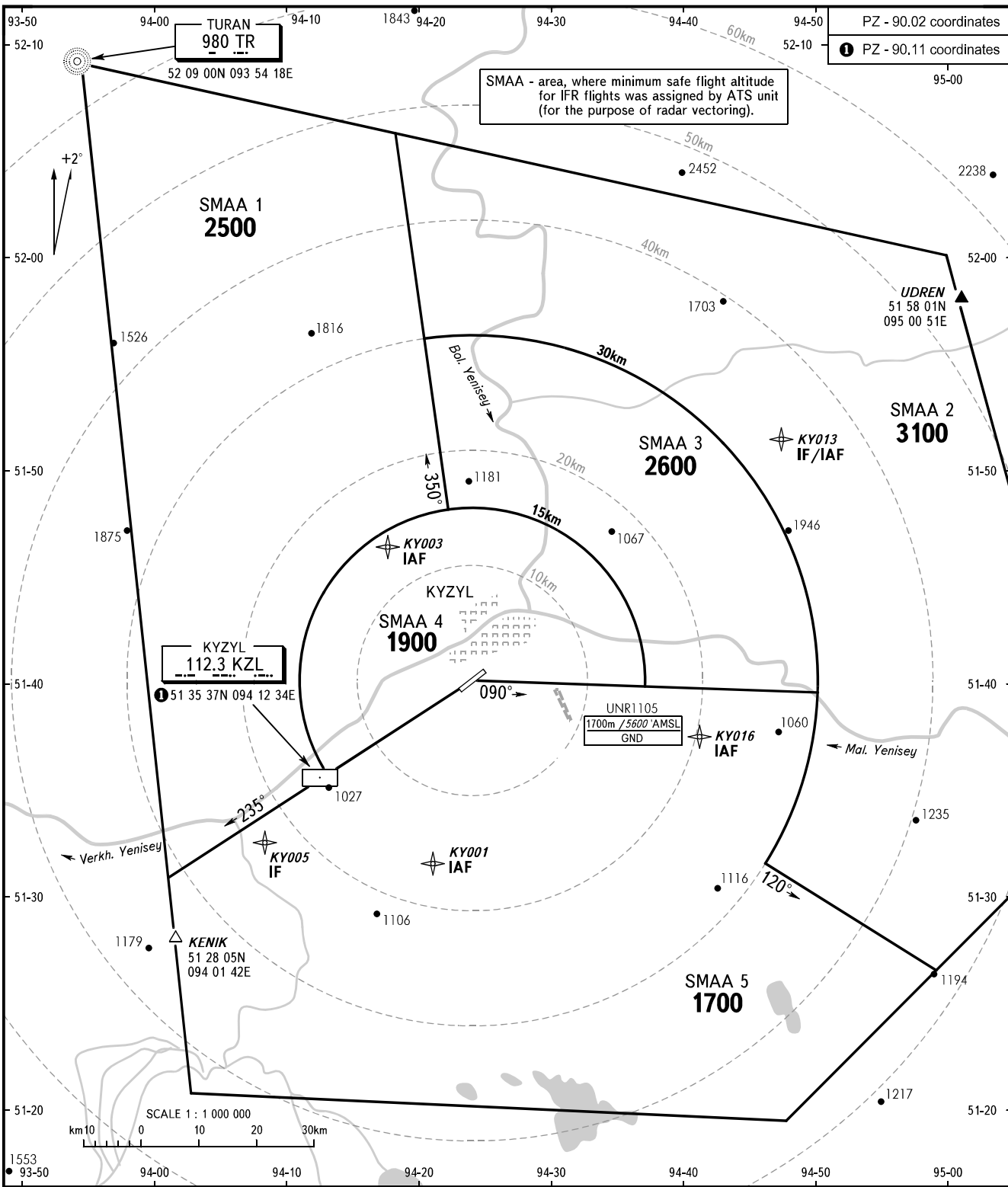
ATC SURVEILLANCE MINIMUM
ALTITUDE CHART - ICAO

ELEV
649m

TRANSITION HEIGHT: (2600)

KYZYL, RUSSIA

KYZYL



PZ - 90.02 coordinates
① PZ - 90.11 coordinates

SMAA - area, where minimum safe flight altitude for IFR flights was assigned by ATS unit (for the purpose of radar vectoring).

KYZYL
112.3 KZL
① 51 35 37N 094 12 34E

KENIK
51 28 05N
094 01 42E

UNR1105
1700m / 5600' AMSL
GND

TOWER 120.700

- WARNING:**
1. The chart may only be used for cross-checking of altitudes assigned while the aircraft is under radar control.
 2. Temperature corrections are applied to altitudes assigned by the ATS unit when necessary.

BEARINGS AND TRACKS ARE MAGNETIC
ALTITUDES, HEIGHTS AND ELEVATIONS IN METRES
DISTANCES IN KILOMETRES

Alt set: -QFE(QNH on req);
-mm(hPa on req).

CHANGE: New chart

SURVEILLANCE MINIMUM ALTITUDE AREAS		
IDENT	MNM ALT (m)	LATERAL LIMITS (PZ-90.11 coordinates)
SMAA 1	2500	513052.80N 0940112.30E – 513545.10N 0941308.40E – then clockwise by arc of a circle radius of 15 KM centred at 514010.00N 0942402.20E to 514810.80N 0942213.20E – 520548.30N 0941811.10E then along Kyzyl CTR boundary to 513052.80N 0940112.30E.
SMAA 2	3100	520548.30N 0941811.10E – 515611.50N 0942023.50E then clockwise by arc of a circle radius of 30 KM centred at 514010.00N 0942402.20E to 513133.40N 0944602.20E – 512630.30N 0945848.30E then along Kyzyl CTR boundary to 520548.30N 0941811.10E.
SMAA 3	2600	515611.50N 0942023.50E then clockwise by arc of a circle radius of 30 KM centred at 514010.00N 0942402.20E to 513933.30N 0945002.30E – 513952.40N 0943702.30E then anticlockwise by arc of a circle radius of 15 KM centred at 514010.00N 0942402.20E to 514810.80N 0942213.20E – 515611.50N 0942023.50E.
SMAA 4	1900	514010.00N 0942402.20E – 513545.10N 0941308.40E then clockwise by arc of a circle radius of 15 KM centred at 514010.00N 0942402.20E to 513952.40N 0943702.30E - 514010.00N 0942402.20E.
SMAA 5	1700	513052.80N 0940112.30E – 514010.00N 0942402.20E – 513933.30N 0945002.30E then clockwise by arc of a circle radius of 30 KM centred at 514010.00N 0942402.20E to 513133.40N 0944602.20E – 512630.30N 0945848.30E then along Kyzyl CTR boundary to 513052.80N 0940112.30E.