

# GORNO-ALTAISK, RUSSIA

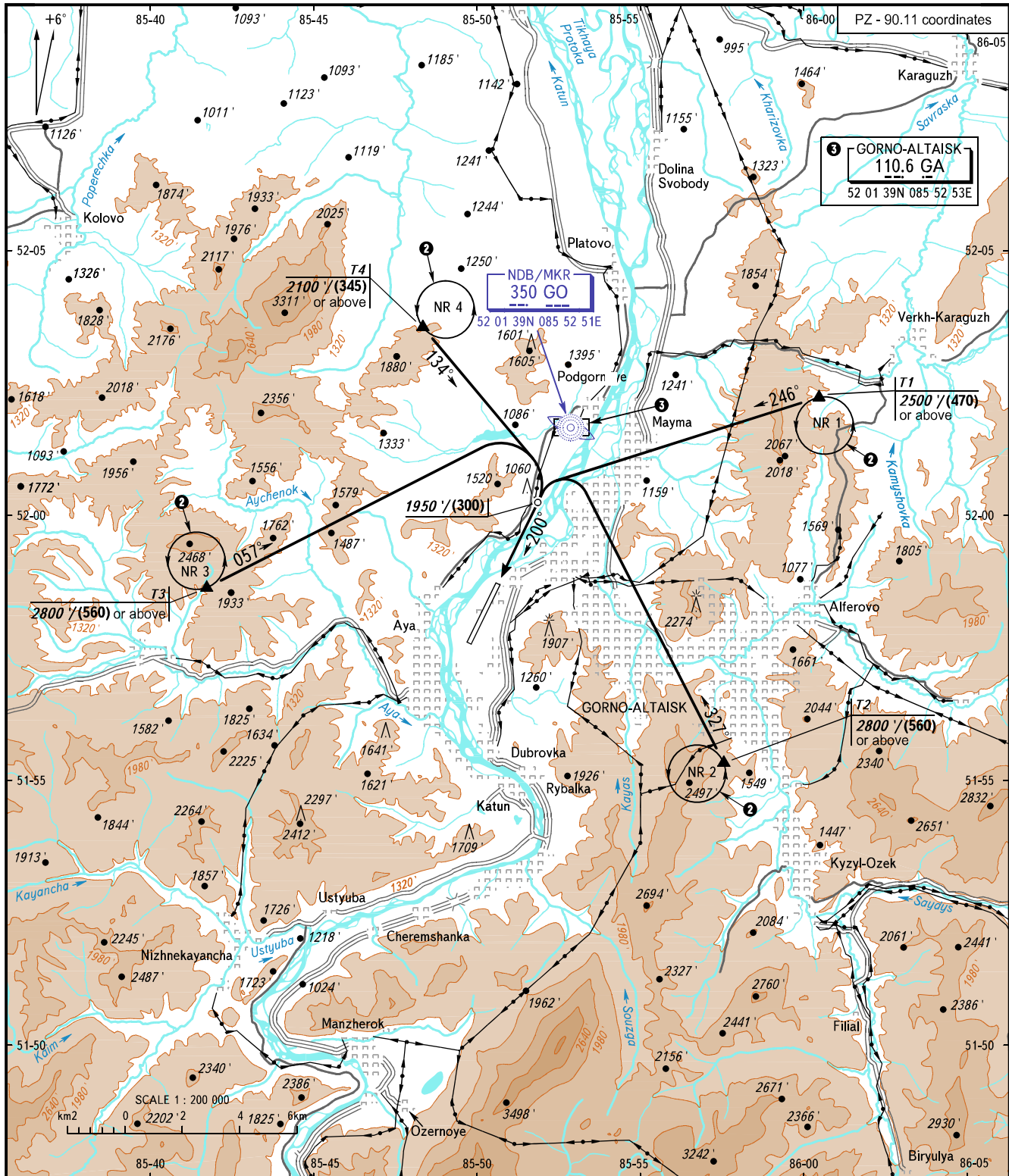
## GORNO-ALTAISK

### RWY 20

# VFR ARRIVAL CHART

TRANSITION  
LEVEL: ①

③ GORNO-ALTAISK  
110.6 GA  
52 01 39N 085 52 53E



DIALIZ VYSHKA 133.000

- ① TRANSITION LEVEL:
- FL090 when QNH is 1013 hPa (760mm mercury column) or above;
  - FL100 when QNH is 977 hPa (733mm mercury column) or above, but less than 1013 hPa (760mm mercury column);
  - FL110 when QNH is less than 977 hPa (733mm mercury column).

② Holding areas see UNBG AD 2.22.

BEARINGS AND TRACKS ARE MAGNETIC  
ALTITUDES AND ELEVATIONS IN FEET  
HEIGHTS IN METRES  
DISTANCES IN KILOMETRES

Alt set: -QNH(QFE on req);  
-hPa(mm on req).

CHANGE: New chart