

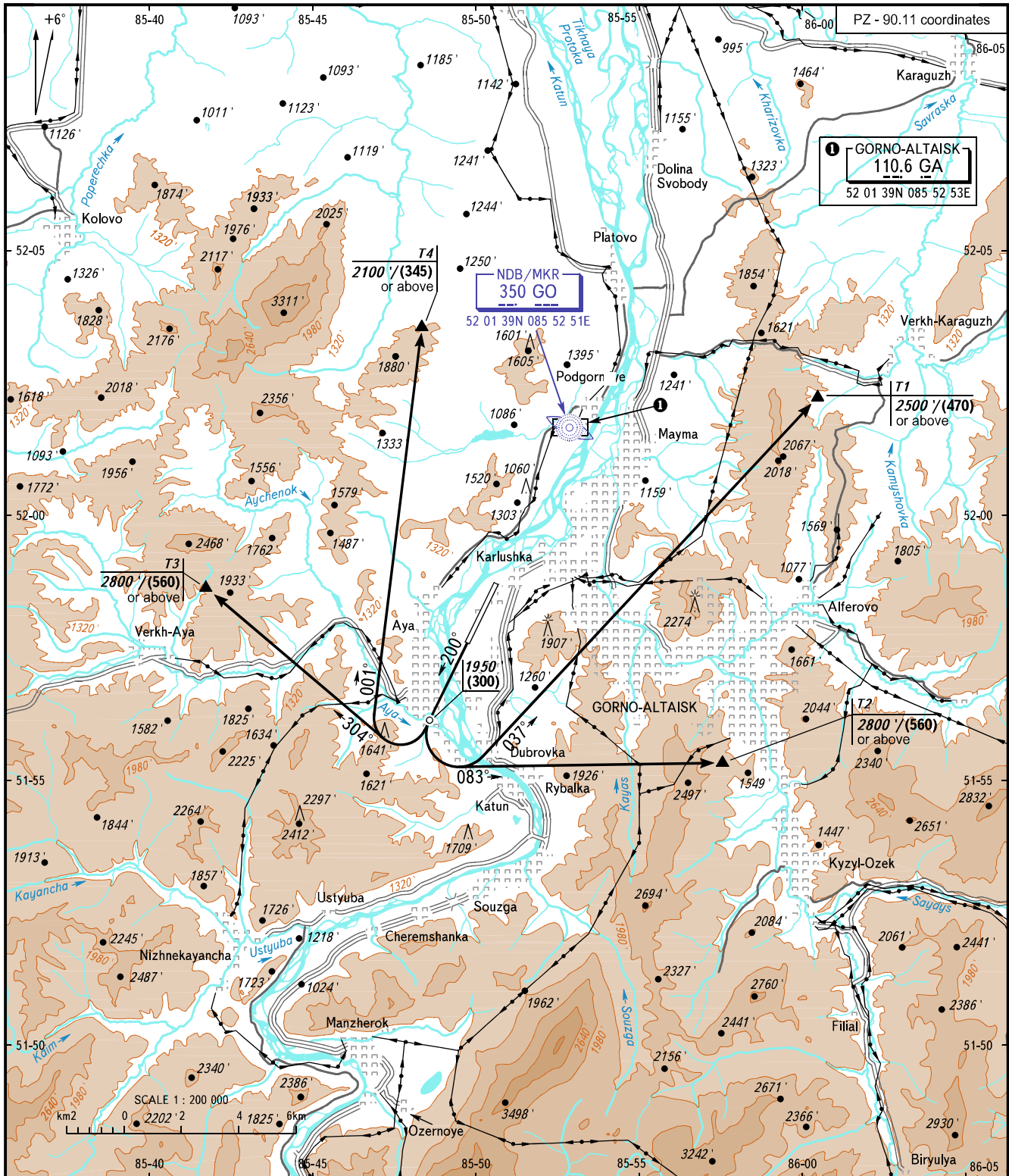
VFR DEPARTURE CHART

GORNO-ALTAISK, RUSSIA

GORNO-ALTAISK

RWY 20

TRANSITION ALT: 8000'
TRANSITION HGT: (2150)



PZ - 90.11 coordinates

GORNO-ALTAISK
110.6 GA
52 01 39N 085 52 53E

DIALIZ VYSHKA 133.000

BEARINGS AND TRACKS ARE MAGNETIC
ALTITUDES AND ELEVATIONS IN FEET
HEIGHTS IN METRES
DISTANCES IN KILOMETRES

Alt set: -QNH(QFE on req);
-hPa(mm on req).