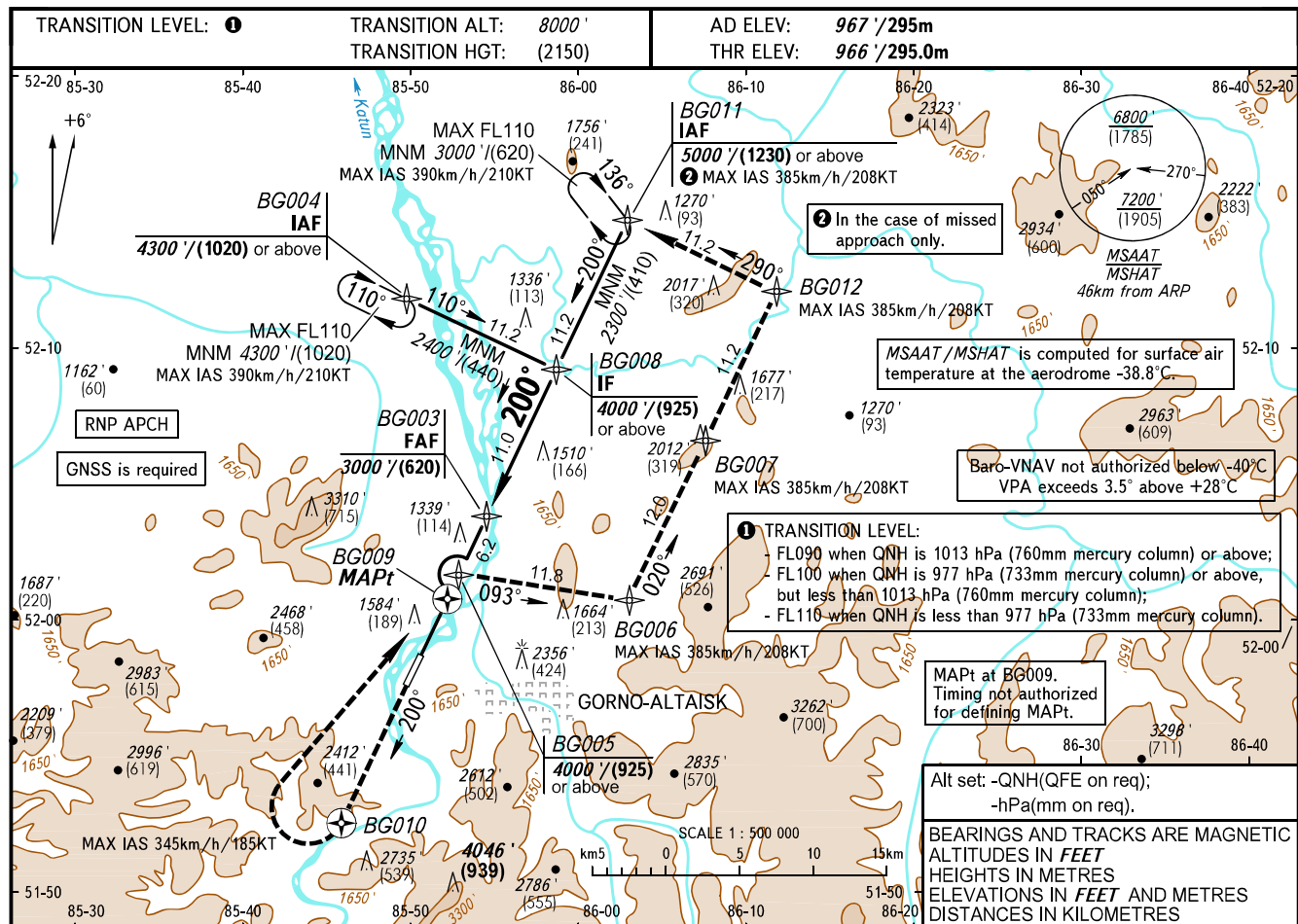


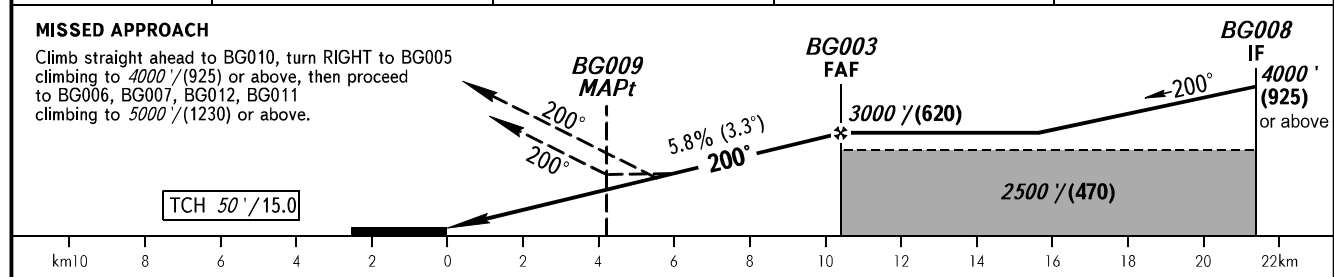
INSTRUMENT
APPROACH
CHART - ICAO

DIALIZ VYSHKA 133.000

GORNO-ALTAISK, RUSSIA
GORNO-ALTAISK
RNP RWY 20



DIST to THR RWY 20	6.0	8.0	10.0	10.4
ALTITUDE/HEIGHT	2160'/(365)	2540'/(480)	2920'/(595)	3000'/(620)
DIST to MAPt	2.0	4.0	6.0	6.2
ALTITUDE/HEIGHT	2200'/(376)	2580'/(492)	2960'/(608)	3000'/(620)



OCA(H)		A	B	C	D	WARNING Simultaneous use of holding areas at the same flight height is PROHIBITED. * - MNM climb gradient for missed APCH							
Straight-in	LNAV 2.5%*	1890' (920')/(280)	1910' (950')/(290)	1940' (970')/(300)	1960' (990')/(305)								
	LNAV 3.5%*	1860' (890')/(275)	1890' (920')/(280)	1920' (960')/(295)	1950' (980')/(300)								
Approach	LNAV 4.0%*	1840' (870')/(265)	1880' (910')/(280)	1920' (950')/(290)	1950' (980')/(300)								
	LNAV 5.0%*	1810' (840')/(260)	1860' (890')/(275)	1900' (940')/(290)	1940' (980')/(300)								
	LNAV/VNAV 2.5%*	1720' (750')/(230)	1740' (770')/(235)	1790' (820')/(250)	1810' (840')/(260)								
	LNAV/VNAV 3.5%*	1680' (720')/(220)	1680' (720')/(220)	1790' (820')/(250)	1790' (820')/(250)								
Circling		2500' (1530')/(470)	2500' (1530')/(470)	3150' (2180')/(665)	3440' (2470')/(755)								
GROUND SPEED		km/h	150	180	210	240	270	300	330	360	390	420	450
		kt	81	97	113	130	146	162	178	194	211	227	243
RATE OF DESCENT		m/s	2.4	2.9	3.4	3.9	4.4	4.8	5.3	5.8	6.3	6.8	7.3
		ft/min	476	571	666	761	856	951	1047	1142	1237	1332	1427