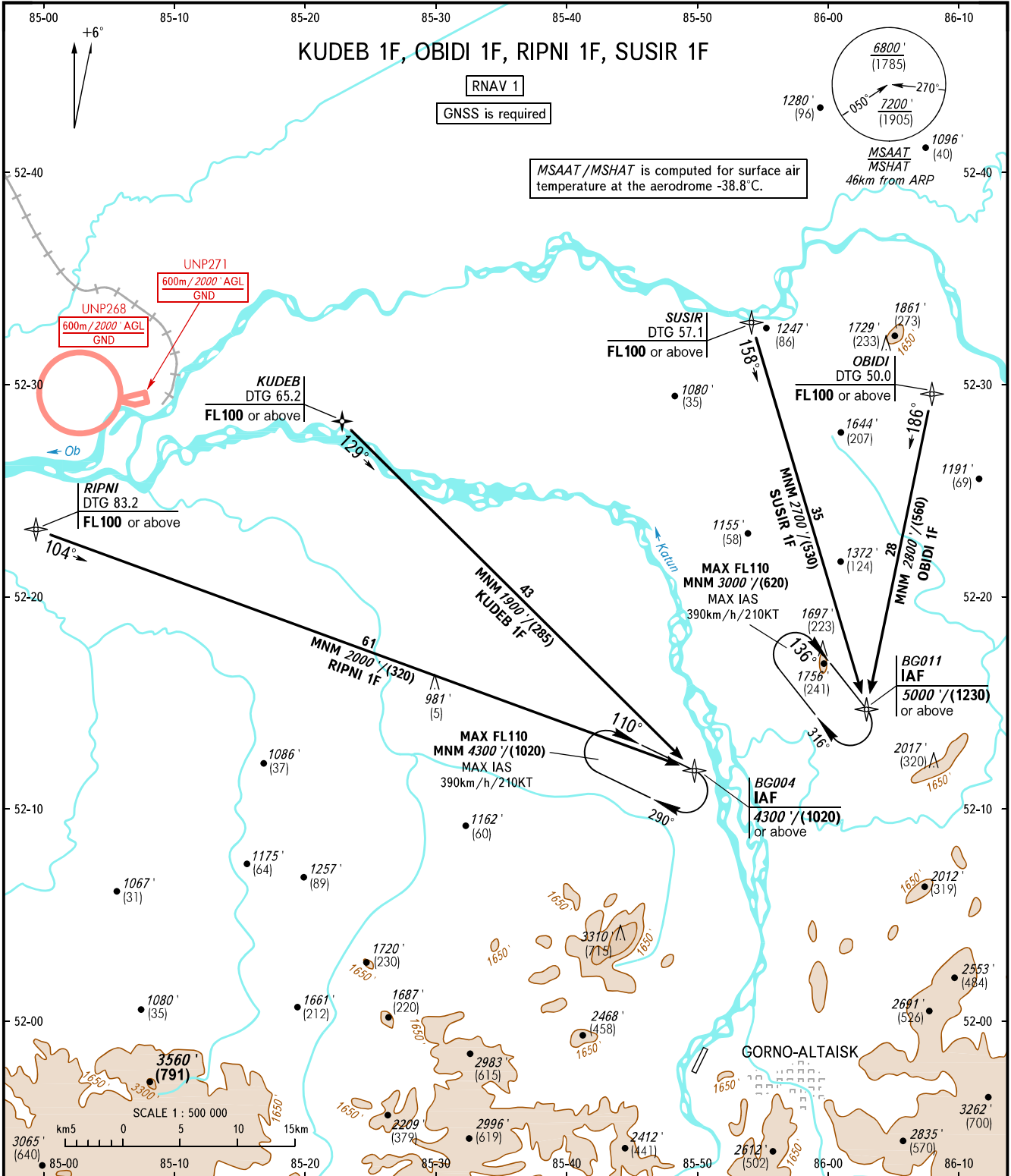


STANDARD ARRIVAL CHART
INSTRUMENT (STAR) - ICAO

GORNO-ALTAISK, RUSSIA
GORNO-ALTAISK
RNAV RWY 20

TRANSITION
LEVEL: 1



DIALIZ VYSHKA 133.000

1 TRANSITION LEVEL:

- FL090 when QNH is 1013 hPa (760mm mercury column) or above;
- FL100 when QNH is 977 hPa (733mm mercury column) or above, but less than 1013 hPa (760mm mercury column);
- FL110 when QNH is less than 977 hPa (733mm mercury column).

BEARINGS AND TRACKS ARE MAGNETIC
ALTITUDES IN FEET
HEIGHTS IN METRES
ELEVATIONS IN FEET AND METRES
DISTANCES IN KILOMETRES

Alt set: -QNH(QFE on req);
-hPa(mm on req).

WARNING:

1. CDO are applied depending on air traffic conditions.
2. CDO are applied if there is no conflicting traffic.
3. CDO can be cancelled by ATS unit in case of necessity to provide separation.
4. CDO are applied up to FAF/FAP.
5. DTG is calculated up to FAF/FAP.
6. Simultaneous use of holding areas at the same flight height is PROHIBITED.