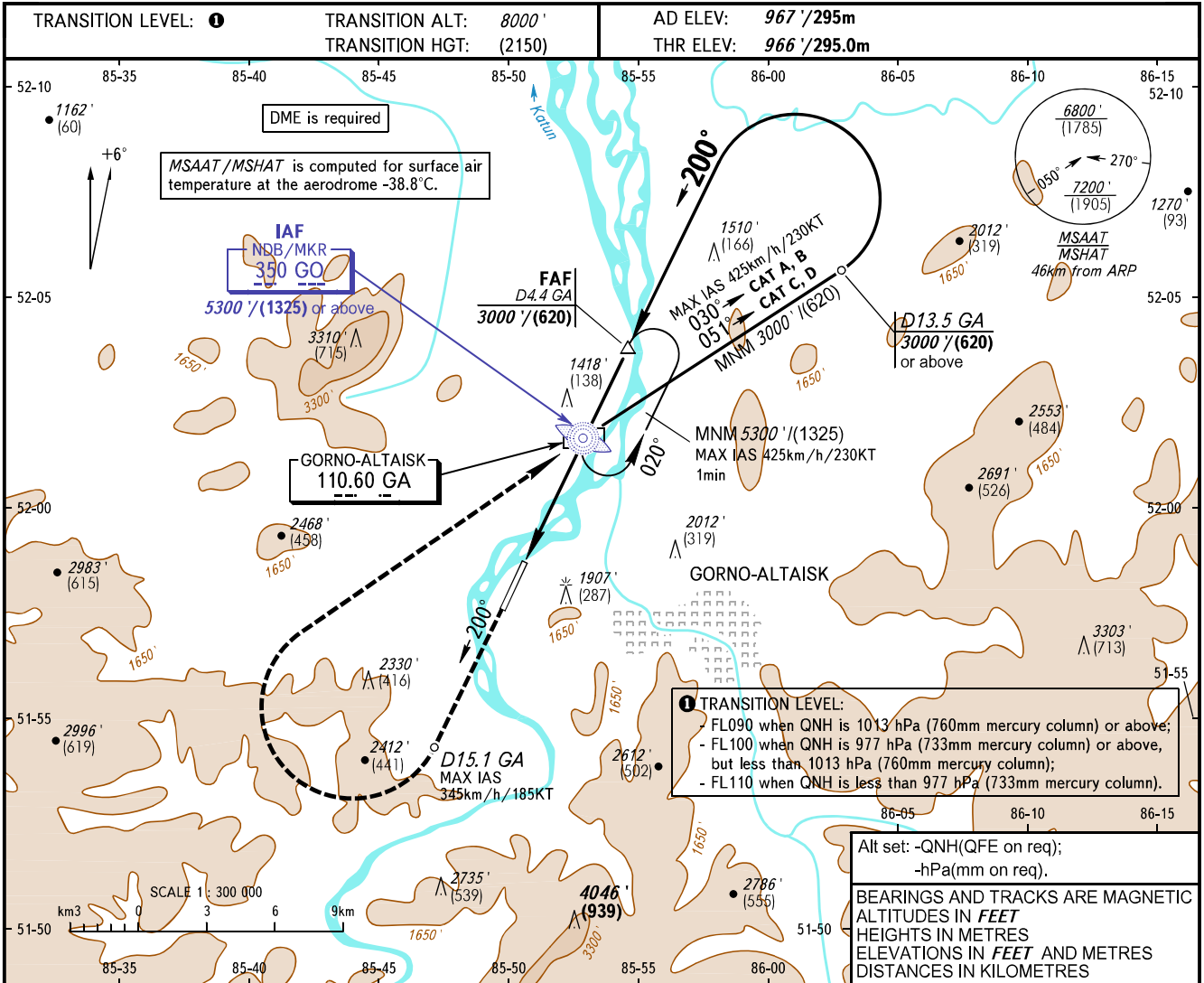


**INSTRUMENT
APPROACH
CHART - ICAO**

DIALIZ VYSHKA **133.000**

GORNO-ALTAISK, RUSSIA
GORNO-ALTAISK
NDB RWY 20

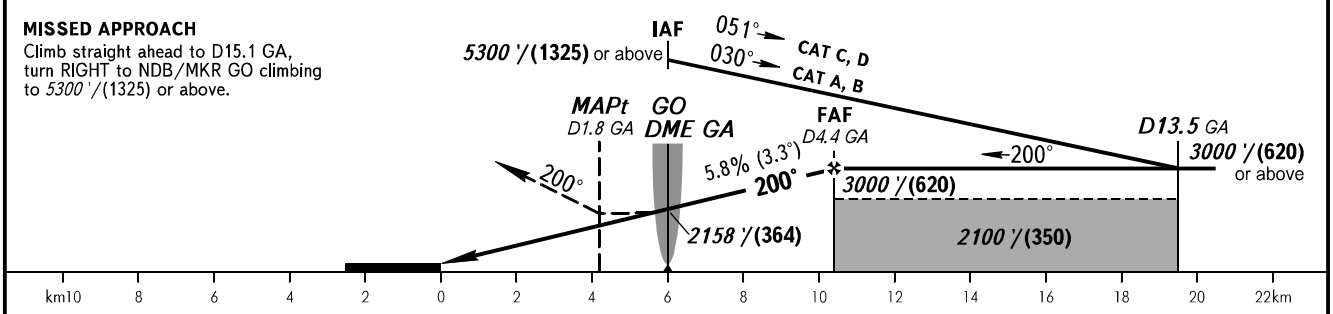


TRANSITION LEVEL:
 - FL090 when QNH is 1013 hPa (760mm mercury column) or above;
 - FL100 when QNH is 977 hPa (733mm mercury column) or above, but less than 1013 hPa (760mm mercury column);
 - FL110 when QNH is less than 977 hPa (733mm mercury column).

Alt set: -QNH(QFE on req);
-hPa(mm on req).

BEARINGS AND TRACKS ARE MAGNETIC
 ALTITUDES IN FEET
 HEIGHTS IN METRES
 ELEVATIONS IN FEET AND METRES
 DISTANCES IN KILOMETRES

DME GA	2.0	4.0	4.4
ALTITUDE/HEIGHT	2540'/(480)	2920'/(595)	3000'/(620)



OCA(H)		A	B	C	D	WARNING FAF-MAPt 6.2km. Timing not authorized for defining MAPt.
Straight-in Approach		1870' (910') (280)	1870' (910') (280)	1920' (950') (290)	1940' (970') (300)	
	Circling	2500' (1530') (470)	2500' (1530') (470)	3150' (2180') (665)	3440' (2470') (755)	

GROUND SPEED	km/h	150	180	210	240	270	300	330	360	390	420	450
	kt	81	97	113	130	146	162	178	194	211	227	243
RATE OF DESCENT	m/s	2.4	2.9	3.4	3.9	4.4	4.8	5.3	5.8	6.3	6.8	7.3
	ft/min	476	571	666	761	856	951	1047	1142	1237	1332	1427

CHANGE: OBST